

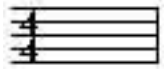
BAND SR COVID RELATED ADJUSTMENTS

Level .5 - Conference 1C Varsity; All MS/JH NV & Sub NV

Length: One or less.

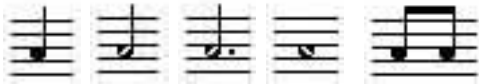
Key: Concert B-flat or E-flat with no accidentals or key changes

Meter: Listed below with no meter change.



Rhythm:

BASIC PATTERNS



PERCUSSION ONLY

