

Texas State Solo & Ensemble Contest

May 2024

Theory Test Cover Sheet

Please **PRINT** and complete the following information:

Student Name: _____ Grade _____
(2023-2024)

School: _____

School City: _____

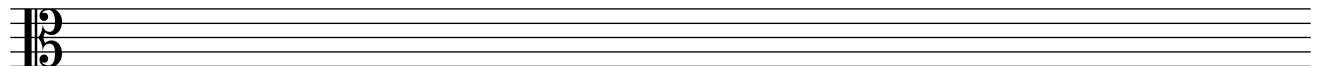
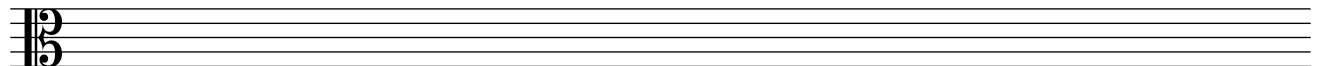
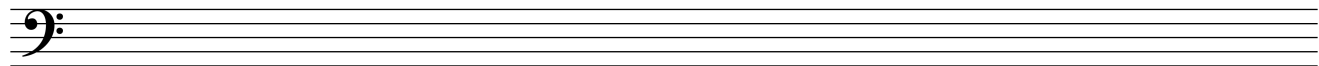
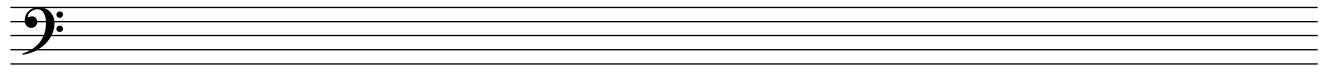
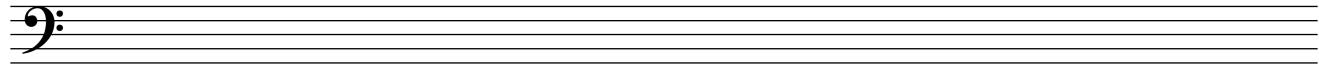
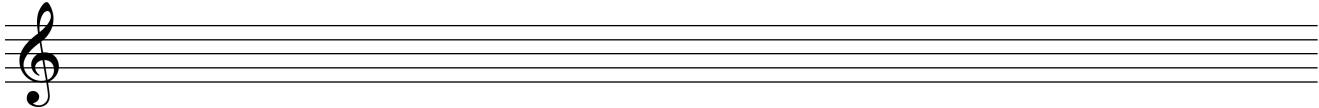
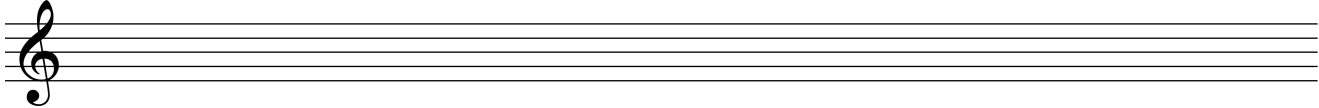
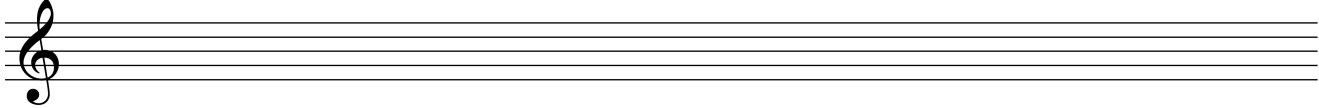
+++++

(For Office Use Only)

Score: _____ out of 100 points possible

Rating: _____

“Scratch Paper” – This page will not be graded.



Aural Skills Portion

In questions 1-4 [2 points each], circle the answer that corresponds to the type of scale played. Each scale will be played twice.

1. a. Major b. natural minor c. harmonic minor d. melodic minor e. none of these
2. a. Major b. natural minor c. harmonic minor d. melodic minor e. none of these
3. a. Major b. natural minor c. harmonic minor d. melodic minor e. none of these
4. a. Major b. natural minor c. harmonic minor d. melodic minor e. none of these

In questions 5-12, you will hear an interval (pitches played once in succession and once simultaneously). Identify the interval in the space provided according to size and type (m2, M2, etc.). [1 point each]

5. _____ 6. _____ 7. _____ 8. _____ 9. _____ 10. _____ 11. _____ 12. _____

In questions 13-16, you will hear a triad in root position. Identify the type of triad played. Each triad will be played twice. [1½ points each]

13. a. Major b. minor c. diminished d. Augmented
14. a. Major b. minor c. diminished d. Augmented
15. a. Major b. minor c. diminished d. Augmented
16. a. Major b. minor c. diminished d. Augmented

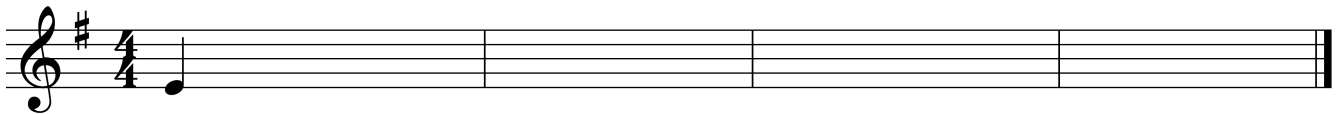
In questions 17-20, you will hear a seventh chord played in root position. Identify the type of seventh chord played. Each seventh chord will be played twice. [1 point each]

17. a. M7 b. m7 c. Mm7 d. Ø7 e. o7
18. a. M7 b. m7 c. Mm7 d. Ø7 e. o7
19. a. M7 b. m7 c. Mm7 d. Ø7 e. o7
20. a. M7 b. m7 c. Mm7 d. Ø7 e. o7

For questions 21-24, name a time signature that would be appropriate for the excerpt being played. While there would be more than one possible correct answer in each case, you should only give one answer. Each excerpt is about one minute long and will be played once. [1 points each]

21. _____ 22. _____ 23. _____ 24. _____

25. Notate the melody that will be played for you. It is in E minor, and E is the starting pitch. The melody will be played six times. [14 points; ½ pt. for each pitch; ½ pt. for each tone duration]



Written Theory Portion

26. Which of the following time signatures is considered a compound meter? [2 points]

- a. $\frac{2}{4}$ b. $\frac{3}{4}$ c. $\frac{4}{4}$ d. $\frac{6}{4}$

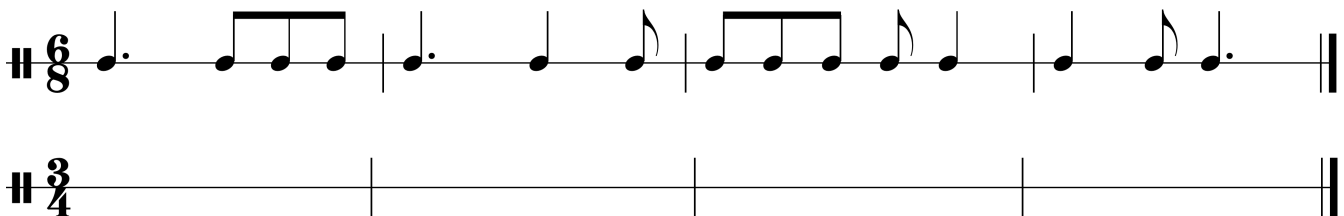
27. Divide the following example into measures by placing barlines in the appropriate places. [3 points; ½ point per barline]



28. How many sixteenth notes equal the duration of a dotted half note? [1 point]

- a. 10 b. 12 c. 14 d. 16

29. Rewrite the following rhythm (given in 6/8-meter) into 3/4-meter, with correct rhythmic groupings (beaming). Hint: The **sounding** durations should remain the same, but the rhythmic grouping should reflect the meter; as a result, the emphases, when performed, may change. [4 points; 1 point per bar]



30. List the correct order, from slowest to fastest, of these tempos [2 points]:

1 = allegro 2 = vivace 3 = moderato 4 = andante

_____, _____, _____, and _____.

31. Which instrument is NOT a string instrument? [2 points]

- a. viola b. timpani c. cello d. double bass

For questions 32-39 [1 point each], write the following key signatures:



32. c minor



33. e minor



34. d# minor



35. g minor



36. E^b Major



37. G^b Major



38. B Major



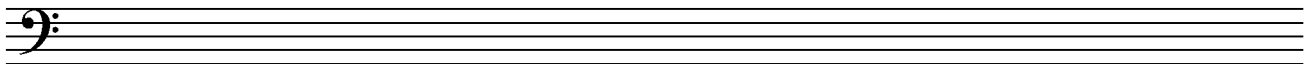
39. D Major

For questions 40-42, write the following ASCENDING scales. Use accidentals, not key signatures. [2 points each; no partial credit]

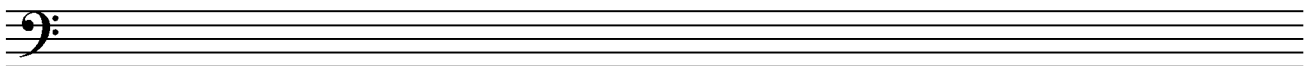
40. the parallel harmonic minor scale of D Major



41. b melodic minor scale



42. the relative major scale of f# minor



For questions 43-47, notate the following intervals by adding a note **above** the given note. [1 pt. each]

<u>m7</u>	<u>m6</u>	<u>M2</u>	<u>P4</u>	<u>m3</u>
43.	44.	45.	46.	47.

For questions 48-52, notate the following intervals by adding a note **below** the given note. [1 pt. each]

<u>M3</u>	<u>m2</u>	<u>P5</u>	<u>M6</u>	<u>M7</u>
48.	49.	50.	51.	52.

For questions 53-59 [1 point each], write the following triads and seventh chords in root position (each given note being the root of the chord):

<u>m7 chord</u>	<u>Mm7 chord</u>	<u>dim. triad</u>	<u>o7 chord</u>	<u>Major triad</u>	<u>m7 chord</u>	<u>minor triad</u>
53.	54.	55.	56.	57.	58.	59.

60. Determine the key for this chorale and indicate by means of Roman Numerals the correct harmonic analysis. Be sure to label inversions where necessary and to distinguish between triads and seventh chords. [11 points; 1 pt. for the key and 1 pt. each RN]

____: _____

PLEASE DOUBLE-CHECK THAT EACH PAGE CONTAINS YOUR NAME!