

# Texas State Solo & Ensemble Contest

## May 2023

### Theory Test Cover Sheet

Please **PRINT** and complete the following information:

Student Name: \_\_\_\_\_ Grade \_\_\_\_\_  
(2022-2023)

School: \_\_\_\_\_

School City: \_\_\_\_\_

+++++

(For Office Use Only)

**Score:** \_\_\_\_\_ out of 100 points possible

**Rating:** \_\_\_\_\_

**“Scratch Paper” – This page will not be graded.**



1. Which of the following time signatures is considered a quadruple meter? [2 points]

- a.  $\frac{2}{8}$
- b.  $\frac{3}{8}$
- c.  $\frac{4}{8}$
- d.  $\frac{6}{8}$

2. Divide the following example into measures by placing barlines in the appropriate places. [3 points; ½ point per barline]



3. How many eighth notes equal the duration of a double-dotted half note? [1 point]

- a. 6
- b. 7
- c. 8
- d. 9

4. Rewrite the following rhythm (in 3-4-meter), with correct rhythmic groupings (beaming), into 6-8-meter. Hint: The *sounding* durations should remain the same, but the rhythmic grouping should reflect the meter; as a result, the emphases, when performed, may change. [4 points; 1 point per measure]



5. List the correct order, from slowest to fastest, of these tempos [2 points]:

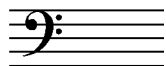
- 1 = adagio      2 = grave      3 = presto      4 = allegretto

\_\_\_\_\_, \_\_\_\_\_, \_\_\_\_\_, and \_\_\_\_\_.

6. Which instrument is a woodwind instrument? [2 points]

- a. crotales
- b. sitar
- c. saxophone
- d. cornet

For questions 7-14 [1 point each], write the following key signatures:



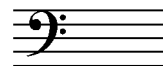
7. g minor



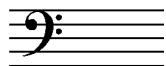
8. c minor



9. e minor



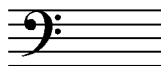
10. d<sup>#</sup> minor



11. D Major



12. E<sup>b</sup> Major



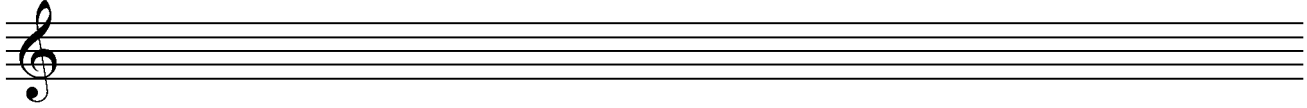
13. G<sup>b</sup> Major



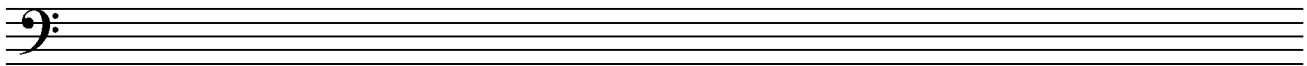
14. B Major

For questions 15-17, write the following ASCENDING scales. Use accidentals, not key signatures. [2 points each; no partial credit]

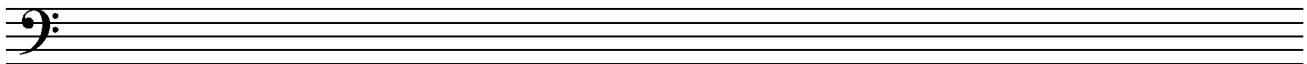
15. d harmonic minor scale



16. e melodic minor scale



17. the parallel major scale of e minor



For questions 18-22, notate the following intervals by adding a note **above** the given note. [1 pt. each]

<u>m7</u>	<u>P4</u>	<u>M6</u>	<u>m2</u>	<u>m6</u>
18.	19.	20.	21.	22.

For questions 23-27, notate the following intervals by adding a note **below** the given note. [1 pt. each]

<u>P5</u>	<u>M7</u>	<u>M3</u>	<u>M2</u>	<u>m3</u>
23.	24.	25.	26.	27.

For questions 28-34 [1 point each], write the following triads and seventh chords in root position (each given note being the root of the chord):

<u>Mm7 chord</u>	<u>M7 chord</u>	<u>dim. triad</u>	<u>ø7 chord</u>	<u>Major triad</u>	<u>m7 chord</u>	<u>minor triad</u>
28.	29.	30.	31.	32.	33.	34.

35. Determine the key for this chorale and indicate by means of Roman Numerals the correct harmonic analysis. Be sure to label inversions where necessary and to distinguish between triads and seventh chords. [11 points; 1 pt. for the key and 1 pt. each RN]

\_\_\_\_ : \_\_\_\_\_  
 \_\_\_\_\_  
 \_\_\_\_\_ \* \_\_\_\_\_ \* \_\_\_\_\_ \*

**Aural Portion**

In questions 36-39 [2 points each], circle the answer that corresponds to the type of scale played.

36. a. Major b. natural minor c. harmonic minor d. melodic minor e. none of these
37. a. Major b. natural minor c. harmonic minor d. melodic minor e. none of these
38. a. Major b. natural minor c. harmonic minor d. melodic minor e. none of these
39. a. Major b. natural minor c. harmonic minor d. melodic minor e. none of these

In questions 40-47, you will hear an interval (pitches played once in succession and once simultaneously). Identify the interval in the space provided according to size and type (m2, M2, etc.). [1 pt each]

40. \_\_\_\_\_ 41. \_\_\_\_\_ 42. \_\_\_\_\_ 43. \_\_\_\_\_ 44. \_\_\_\_\_ 45. \_\_\_\_\_ 46. \_\_\_\_\_ 47. \_\_\_\_\_

In questions 48-51, you will hear a triad in root position. Identify the type of triad played. Each triad will be played twice. [1½ points each]

48. a. Major b. minor c. diminished d. Augmented
49. a. Major b. minor c. diminished d. Augmented
50. a. Major b. minor c. diminished d. Augmented
51. a. Major b. minor c. diminished d. Augmented

In questions 52-55, you will hear a seventh chord played in root position. Identify the type of seventh chord played. Each seventh chord will be played twice. [1 point each]

52. a. M7            b. m7            c. Mm7            d. Ø7            e. o7
53. a. M7            b. m7            c. Mm7            d. Ø7            e. o7
54. a. M7            b. m7            c. Mm7            d. Ø7            e. o7
55. a. M7            b. m7            c. Mm7            d. Ø7            e. o7

For questions 56-59, name a time signature that would be appropriate for the excerpt being played. While there would be more than one possible correct answer in each case, you should only give one answer. Each excerpt is about one minute long and will be played once. [1 points each]

56. \_\_\_\_\_            57. \_\_\_\_\_            58. \_\_\_\_\_            59. \_\_\_\_\_

60. Notate the melody that will be played for you. It is in C Major, and C is the starting pitch. The melody will be played six times. [14 points; ½ pt. for each pitch; ½ pt. for each tone duration]

