



2024
TENNIS
State Qualifier's
Handbook

UNIVERSITY INTERSCHOLASTIC LEAGUE

STATE QUALIFIER’S HANDBOOK

2024 TENNIS

Congratulations on your team’s advancement to the state tournament. This handbook will serve as a guide to administrators and coaches to assist in providing greater consistency at the Team Tennis State Tournament. You will find this material valuable as you prepare for the tournament and arrive at the tournament.

Questions concerning the UIL Team Tennis State Tournament should be addressed to the following staff members:

Ray Zepeda – UIL Athletic Director
rzepeda@uiltexas.org
(281) 594-9893

Joseph Garmon – Tournament Director
jgarmon@uiltexas.org
(361) 244-0497

Sydney Johnson – Tournament Coordinator
sjohnson@uiltexas.org
(512) 232-4938

TABLE OF CONTENTS

Pre-Tournament Information.....3
Tournament Information.....3
Game Information.....4
Broadcast Information.....5
Tournament Schedule.....6
Maps.....9

PRE-TOURNAMENT INFORMATION

Pairings. The UIL staff will conduct a drawing to determine the pairings. A #1 region winner will play a #2 region runner-up in the first round. Seeding will not be used; therefore, seeding information is not needed or required. The draw will be random and regional representatives will be placed in opposite halves of the bracket.

Schedule. The tournament will be held May 16-17, 2024. A schedule is provided on the UIL website and in this packet. Please note, all times are subject to change based on weather or delays. If the original schedule is altered because of inclement weather, the tournament director will notify participants of possible scenarios.

Packets. State qualifier packets may be picked up at the Blossom Tennis Center Courts beginning on **Wednesday, May 15th from 3:00 pm – 5:00 pm.**

Court Assignments. Court assignments will be made at each site. When announced, please report to the tournament desk for court assignments. Times are subject to change based on delays or inclement weather.

TOURNAMENT INFORMATION

State Venue Locations.

Thursday, May 16

1A-3A Blossom Tennis Center, 12002 Jones Maltsberger Rd, San Antonio, TX 78216

4A-6A Annemarie Tennis Center, 7001 Culebra Rd, San Antonio, TX 78238

Practice Site Northside Tennis Center, 12045 Leslie Rd, Helotes, TX 78023

Practice Site Alamo Heights Tennis Center, 705 Trafalgar Rd, San Antonio, TX 78216

Friday, May 17

1A-3A Blossom Tennis Center, 12002 Jones Maltsberger Rd, San Antonio, TX 78216

4A-6A Annemarie Tennis Center, 7001 Culebra Rd, San Antonio, TX 78238

Practice Site Northside Tennis Center, 12045 Leslie Rd, Helotes, TX 78023

Practice Site Alamo Heights Tennis Center, 705 Trafalgar Rd, San Antonio, TX 78216

Practice Site. Teams will be allowed to utilize Northside Tennis Center and Alamo Heights Tennis Center for practice and warmups if they need.

Housing. Teams will be responsible for their own accommodations.

Parking. Parking will be available free of charge at all locations.

Spectator Information. Fan information can be found online at <http://www.uiltexas.org/tennis/state/tennis-state-tournament-spectator-information> under the state tournament page.

Programs. All programs for our state events will be digital and can be found on the State Tournament page of the UIL website.

Tickets. You will be provided a tattoo for each state qualifier, as well as **TWO** coach's wristbands.

Ticket Prices:	1 Day Pass	\$15.00 a day
	2 Day Tournament Pass	\$25.00
	Coaches All Tournament	\$20.00

Supervision of Students. Each school is responsible for their students and behavior exhibited during all contests.

Tennis Etiquette. Applauding a good play is always in order. Applauding an error is never in order. If any person who takes it upon oneself to berate the officials or make oneself conspicuous by bad behavior, the team should be requested to leave the court area. Coaches are responsible for educating their students and parents about appropriate behavior. Players should shake the hand of their opponent before and after games.

Pre-Tournament Workouts. Due to concerns with loss of school time, no workouts on playing courts will be scheduled prior to the tournament.

Warm-ups. Please check the UIL Tennis State Tournament page for warm-up times. The players will have at least a 10-minute warm-up prior to the start of the match. The players must take all practice serves during this time.

Balls. UIL will furnish balls for all matches at the state tournament.

Inclement Weather Schedule. Report to the courts regardless of the weather. Matches will begin as soon as the courts are playable.

Athletic Trainers. An athletic training room and two athletic trainers will be available at the tennis facility. EMTs will also be on staff in case of emergency.

GAME INFORMATION

Substitutions. Before the tournament begins, the qualifying school may make a substitution in doubles or mixed doubles, but not in singles. If at all possible, email Joseph Garmon (jgarmon@uiltexas.org) prior to the Friday before the tournament regarding changes in doubles teams or mixed doubles. Other doubles or mixed doubles substitutes may be permitted before beginning the tournament by notifying the site director.

- **Reminder:** Substitution may be made for illness, injury or academic ineligibility or if a student is penalized by the school for misconduct or violation of the code of conduct.

Conduct. According to the Athletic Plan, unsportsmanlike conduct rules will be enforced during the State Tennis Championships. Be sure to inform your students that acts such as abuse of racket, balls, or equipment, verbal or physical abuse of a player or official, or displaying any action which brings discredit to the individual or his/her school will be considered unsportsmanlike conduct. Any player displaying such conduct may be disqualified from further participation in the tournament. **In the event such acts occur following the match, the medal will go to the next place finisher in that match.**

The referee or court monitors may award point penalties for stalling, tardiness, and unsportsmanlike conduct. The court monitors or referee shall be the judge of any suspension, delay, or interference; and they may, in their discretion, penalize an offending player by awarding the opponent point(s) per offense or disqualify the offender. This does not rule out a competitor's liability to be disqualified for a single flagrant unsportsmanlike act.

The point penalty system will be as follows:

- 1st Offense: Point
 - 2nd Offense: Game Default
 - 3rd Offense: Default from Match/Tournament
- *Penalty points are cumulative throughout the tournament.

Penalties for tardiness will be as follows:

Before the Match Begins

- | | |
|--|---------------------------|
| 5 minutes or less | Loss of toss plus 1 game |
| More than 5 minutes, but not more than 10 minutes | Loss of toss plus 2 games |
| More than 10 minutes, but not more than 15 minutes | Loss of toss plus 3 games |
| More than 15 minutes | Default |

After Intermission

- | | |
|---------------------|----------|
| 5 minutes or less | One game |
| More than 5 minutes | Default |

Coaching.

Number of Coaches Allowed

- a) A maximum of 3 coaches may coach the team during a team match.

Appropriate Timing of Coaching

- a) Coaches are allowed to coach between points and in breaks of play.

Protocols of Coaches on Court

- a) Coaches may coach from on court but must be at or around the net post or bench area (specifically between the net post and half way down the service box). Only one coach may be on any one court at a time.
- b) Coaches should refrain from moving around during points and distracting players and/or disrupting continuous play.
- c) Coaches may move from court to court as long as it is between points and

does not disrupt continuous play on any court.

Protocols of Coaches off Court

- a) Coaching is allowed if the coach is outside the court area as long as it is between points, in any breaks of play, and does not interfere with continuous play.

Opposing Players

- a) Coaches shall not initiate conversation with an opposing player.
- b) Coaches shall not inject themselves in any on court problem unless the opposing coach is also present.
- c) Players shall not initiate conversation with an opposing coach.

Tiebreakers. The 12-Point Tiebreak Scoring System will operate when the score reaches six games all in each set.

Singles:

- a. A player who first wins seven points shall win the game and the set provided he leads by a margin of two points. If the score reaches six points all, the game shall be extended until this margin has been achieved. Numerical scoring shall be used throughout the tiebreaker.
- b. The player who served the first game of the set shall be the server for the first point, which is delivered from the right court. The opponent shall be the server for the second and third points (delivered from the left court, then the right court), and thereafter each player shall serve alternately for two consecutive points (left court, then right court) until the winner of the game and set has been decided.
- c. Players shall change ends after every six points and at the conclusion of the tiebreaker. Note that after any change of ends the server will be serving his/her second serving point.
- d. The player who served first in the set that ended in a tiebreaker shall receive service in the first game of the following set.

Doubles:

- a. In doubles the procedure for singles shall apply. The player who served the first game of the set shall be the server for the first point. Thereafter each player shall serve in rotation for two points, in the same order as previously in that set, until the winners of the game and set have been decided.
- b. Players change ends after every six points and at the conclusion of the tiebreaker. The team that served first in the set that ended in a tiebreaker shall receive service in the first game of the following set.

Awards. Awards shall be distributed at the tennis tournament after all semi-final and finals matches, once the athletes report to the tournament desk. Site directors will present the awards.

State Meet Certificates. Certificates will be available for digital download located on the QR code inside the school packet.

BROADCAST INFORMATION

Videotaping. *If your school desires to film or videotape your state tournament matches, contact UIL staff before setting up equipment. Only teams playing will be able to film their own match.*

Radio Broadcasting and Telecasting. The broadcasting and telecasting rights must be arranged with UIL staff the week before the state tournament.

TOURNAMENT SCHEDULE

Blossom Tennis Center

1A, 2A, 3A

May 16-17, 2023

Thursday, May 16 (1A-3A)

8:00 AM

Girls & Boys Singles – Quarterfinals – 16 Matches

10:00 AM

Boys Singles & Girls Doubles – Quarterfinals – 16 Matches

12:00 PM

Girls Doubles & Boys Doubles – Quarterfinals – 16 Matches

2:00 PM

Mixed Doubles – Quarterfinals – Girls Singles – Semifinals – 16 Matches

4:00 PM

Girls & Boys Singles, Girls & Boys Doubles – Semifinals – 16 Matches

6:00 PM

Boys Doubles & Mixed Doubles – Semifinals – 10 Matches

Friday, May 17 (1A-3A)

9:00 AM

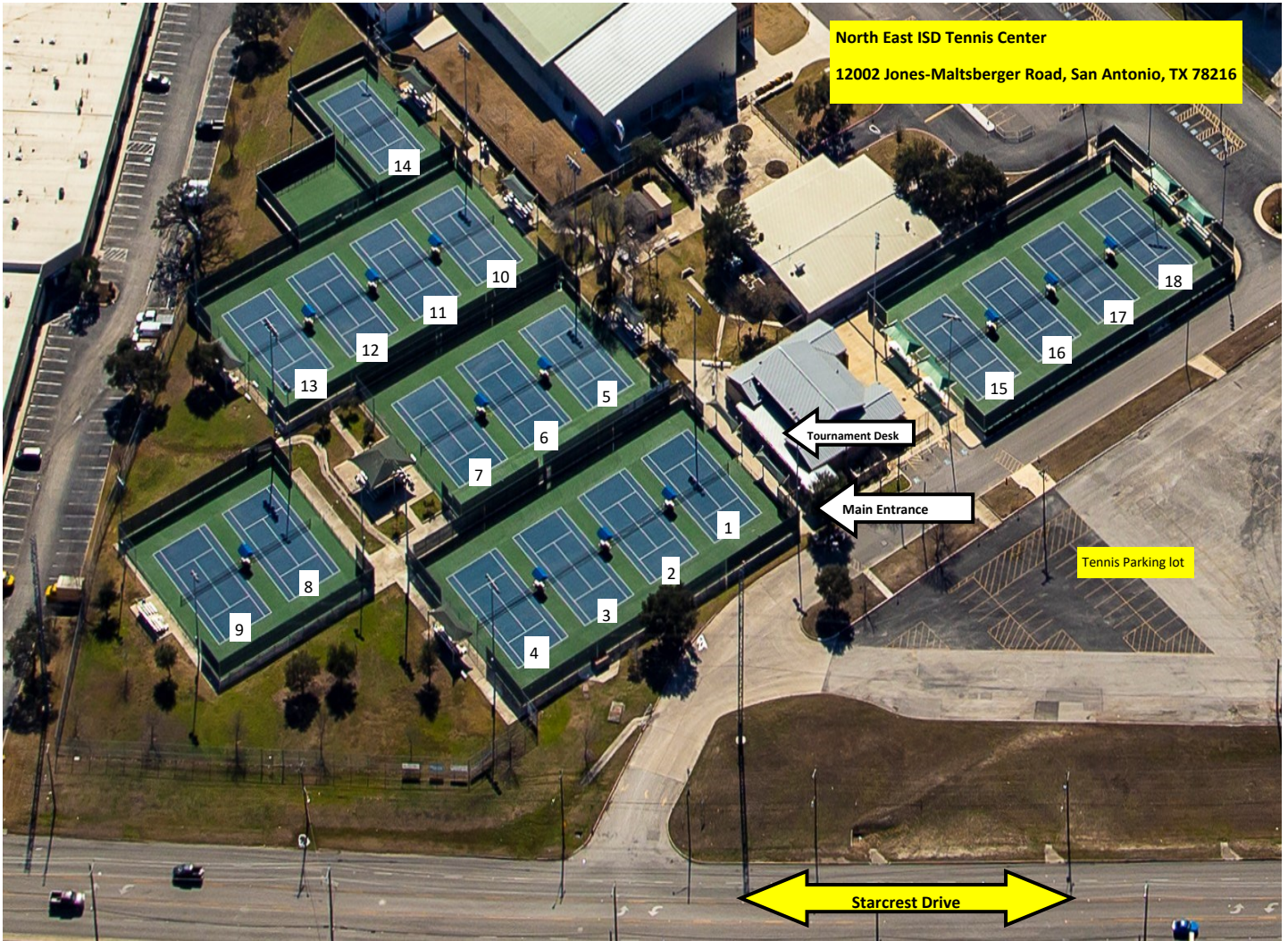
Boys and Girls Singles – Finals – 6 Matches

11:00 AM

Boys & Girls Doubles & Mixed Doubles – Finals – 9 Matches

Blossom Tennis Center

1A, 2A, 3A
May 16-17, 2023



TOURNAMENT SCHEDULE

Annemarie Tennis Center

4A, 5A, 6A

May 16-17, 2023

Thursday, May 16 (4A-6A)

8:00 AM

Girls & Boys Singles – Quarterfinals – 16 Matches

10:00 AM

Boys Singles & Girls Doubles – Quarterfinals – 16 Matches

12:00 PM

Girls Doubles & Boys Doubles – Quarterfinals – 16 Matches

2:00 PM

Mixed Doubles – Quarterfinals – Girls Singles – Semifinals – 16 Matches

4:00 PM

Girls & Boys Singles, Girls & Boys Doubles – Semifinals – 16 Matches

6:00 PM

Boys Doubles & Mixed Doubles – Semifinals – 10 Matches

Friday, May 17 (4A-6A)

9:00 AM

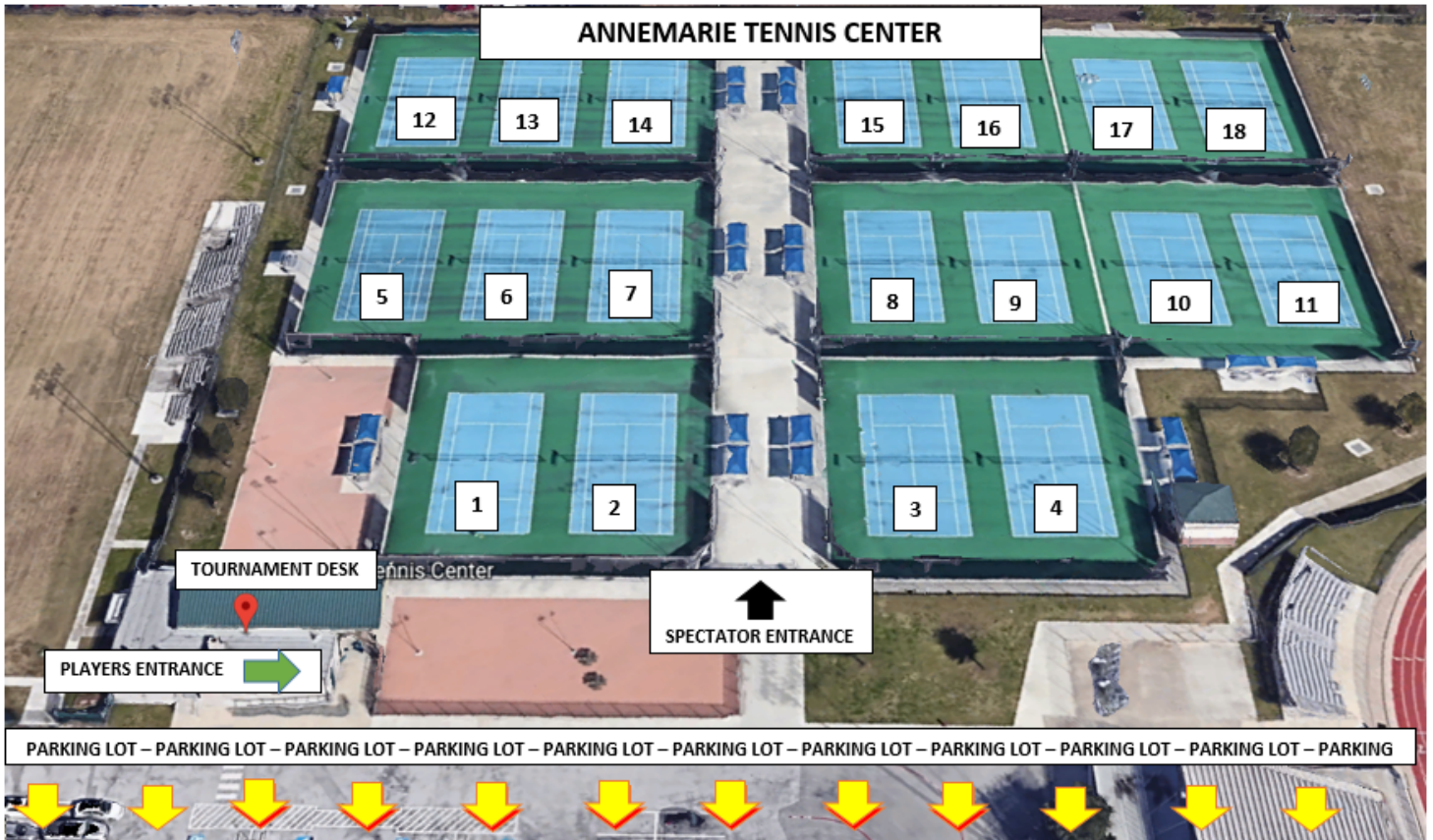
Boys and Girls Singles – Finals – 6 Matches

11:00 AM

Boys & Girls Doubles & Mixed Doubles – Finals – 9 Matches

Annemarie Tennis Center

4A, 5A, 6A
May 16-17, 2023



PRACTICE COURTS

Northside Tennis Center



Alamo Heights Tennis Center



