

Conference AAAAAA

Region 2

District 13

District and Bi-District Contest

U.I.L. One-Act Play Contest

Willis High School
10005 Highway 75 North
Willis Tx 77378

Contest Administrator:

Stephanie Hodgins

Email: Shodgins@willisisd.org

cell: 808-542-5003

District Contest Manager:

Ken Labonski

School Phone: 936-856-7112

Cell: 832-257-5855

Dates:

District: March 12, 2021 at 8:00 am at Willis High School

Bi-District: March 25, 2021 at 8:00 am at Willis High School

Please send **SIX** copies of your cut script to Casey Matlock at Willis High School 10005 Highway 75 North, Willis Texas 77378. They will be sent to the judges for both contests.

COVID procedures for 2020/2021

1. All participants and staff will wear masks
2. Schools will arrive in costume and make up. (No dressing/holding rooms will be available)
3. No audience except for those who travel with your school (directors, administrators, chaperones). This will allow for the judges to be slightly closer to the stage to allow them to hear actors with masks. Community members will need to see their schools play at a preparatory or culminating performance on their student's campus.
4. Schools would arrive, unload, perform, and leave the WHS campus one by one in the sequence of our established order.
6. The directors meeting, critiques and awards will be held virtually **March 11th at 7:00 pm**

Email: Klabonski@willisisd.org

District Contest Host:

Casey Matlock

Director of Theatre

School Phone: 936 856-1329

Cell: 936 537-2818

Email: cmatlock@willisisd.org

7. Critiques will be **directly** after your performance
8. Awards will be delivered/shipped the day after the contest
9. Awards ceremony will be virtual at 8:30 pm the evening of the contest.
10. Hand sanitizer stations will be provided. Consider wearing gloves if your student needs to control a curtain.
11. You should screen your cast and crew for symptoms prior to the contest.
12. Face coverings are required at all times.
13. Social distancing is encouraged backstage when possible.
14. Unit sets will be sanitized between each contest and official rehearsals.

Critic Judges

District

Erik Skiles

Kingwood

Lone Star College-Kingwood College Faculty/Staff

MFA - Acting/Directing - Texas Tech - 2003

BME - Texas Tech - 1993

Eric is an actor, director, music director, choreographer and techie; he loves the interdisciplinary aspects of theatre and OAP. He has worked with UIL since 1984 as a participant, event coach, OAP Director, OAP Contest Manager, UIL Academic Coordinator and OAP Adjudicator. Having traveled across the US, Canada, and Europe as a Stage Manager/Performer for concert productions, Eric appreciates the unique challenges of the "traveling show" and the problem-solving/teamwork aspects of a traveling show. For 18 years, Eric has served as Artistic Director of Theatre at Lone Star College-Kingwood, where he teaches acting, movement, stage voice, and costuming. He received his MFA in Acting/Directing from Texas Tech University in 2003. He also earned a Bachelor of Music Education from Texas Tech University in 1993.

Candice Koern

Cypress

Retired

BFA Theatre -(SWT) Texas State

Secondary Education certification

After nearly 30 years as a high school theatre educator, Koern is happily retired! She has appeared at State UIL as an actor and as a director for both OAP and Theatrical Design. In college Koern received an Irene Ryan nomination and was named outstanding Student Teacher of the Year. In addition, Koern was the resident director of the Bridgeland Community Theatre in Cypress having produced and directed theatrical productions, workshops and drama camps for area residents. Koern has served on the TXETA Playfest Committee and the UT-Austin Educator's Forum.

Scott Vernon

League City

Retired

BSEd Texas Tech university

I have taught Theater Arts for 35 years, and enjoyed every minute. I began my teaching career at M. C. Williams High School working with C. Lee Turner then moving to Ball High in Galveston. I retired from Ball in 2010 and started working at Lee College as The Director of The Performing Arts Center. U.I.L. OAP has been a part of my life every year since 1968. I have a BSEd in Theater from Texas Tech University. I have served As Texas Thespian State Director, ETA Territorial Director and on many theater related boards and committees. I am a Member of TETA, ETA and TSCA. I have also worked in the film industry for many years. Participation in the Arts helps to build strong character.

Bi-District

Amy Steele Wernig

Katy Katy ISD School Administrator

M.A. Theatre History and Criticism / Ohio University

M.Ed. Secondary Education / Ohio University

B.S. Communications Comprehensive, English Emphasis / Ohio University

Amy Steele Wernig is a freelance dramaturg and instructional coach who is committed to developing the storyteller in all students. During her years as a theatre director at Waller High School, she helped lead a program that focused on the development of student-written work. Preceding her time in Waller, Amy was the Education and Community Engagement (ECE) Director at the Alley Theatre, where she managed the Alley's wide-ranging educational programs that served over 100,000 students, educators, and community members each year. Prior to her ECE tenure, she was the Alley's Resident Dramaturg/Literary Manager, the vice president of the Literary Managers and Dramaturgs of the Americas (LMDA) Homestead Region, and the recipient of the LMDA Elliott Hayes Award for dramaturgy excellence for her contributions to the Alley Theatre's The Exonerated Project. Among her favorite educational theatre experiences are the years she spent mentoring students as a University of Houston School of Theatre & Dance adjunct professor and as the Texas Thespian State Festival PlayFest dramaturg. She received Master's Degrees in Secondary Education and Theatre History and Criticism from Ohio University.

Jami Hughes

Wharton Wharton College College Faculty/Staff

M.F.A./ Louisiana State University

Acting Intern/Dallas Theatre Center

B.F.A./ Sam Houston State University

Jami Hughes has been a professional educator, actor and director for over 30 years. After graduating with a B.F.A. from Sam Houston State, Jami completed her Acting internship at the Dallas Theatre Center, and then received her M.F.A. in the inaugural Professional Actor's Training Program at L.S.U. Upon graduation she enjoyed a professional acting career, and then turned her focus to teaching and mentoring others, primarily at the college level. As a director, she has been recognized by The Kennedy Center American College Theatre Festival and The Tommy Tune Awards. She continues to perform when she has time. Jami is currently on the drama faculty at Wharton Junior College.

Patrick Pearson

Huntsville Sam Houston State University College Faculty/Staff

MFA in Directing - California State University, Fullerton

BFA in Musical Theatre - Sam Houston State University

Director of Artistic Programming - Ford's Theatre, Washington DC (2013-18)

Patrick Pearson is an Assistant Professor of Theatre and Musical Theatre at Sam Houston State University, where he teaches Directing, Acting and Stage Management. He is also a freelance director, and a member of the Stage Directors and Choreographers Society (SDC). Prior to coming to SHSU, he was the Director of Artistic Programming at Ford's Theatre in Washington DC from 2013-18. From 2004-13, he was an adjunct professor and an award winning freelance director in the Los Angeles/Orange County area. The Kennedy Center American College Theatre Festival has recognized his directorial work at the state, regional and national levels, and he has served as a National Irene Ryan Acting Judge for several years. A native Texan who participated in OAP in high school, Patrick loves working with students. He is thrilled to be back in his home state, working with the next generation of artists.

Eligibility Notice/Entry

Competitors must submit an eligibility notice/entry form via the Spring Meet System online by midnight 10 days before the competition. (Our deadline is March 2)

Order of Rehearsals and Performances-

District Rehearsals at Willis HS

Tues March —9—		Wed March 10-		Thurs March 11th	
12:00 on 3/9/21	Conroe Hs	12:00 on 3/10/21	The Woodlands	12:00 on 3/11/21	College Park
3:15 on 3/9/21	Oak Ridge	3:15 on 3/10/21	Grand Oaks	3:15 on 3/11/21	Willis

District Performances at Willis HS

Position	School	Date
1 8:00-10:00	College Park	March 12
2 9:45-11:30	Conroe	March 12
3 11:15-1:15	The Woodlands	March 12
4 1:15-3:15	Willis	March 12
5 3:00-5:00	Grand Oaks	March 12
6 4:45-6:45	Oakridge	March 12
virtual award ceremony	8:30 pm	

Judge's meeting zoom on March 11th at 7:00 pm

Timeline for March 12th

School 1 College Park

8:00- entering PAC load in.They should come in full costume and make up.

8:30 start 60 mins for set up,show and strike.

9:30 Strike to bus/truck immediately.

9:45 critique. WILLIS CREW DISINFECTS UNIT SET

10:00 exit

School 2 Conroe

9:45 (30 mins to load in)

10:15 start (60 mins for set up,show and strike.)

11:15 strike to your bus immediately

11:30 critique. WILLIS CREW DISINFECTS UNIT SET

11:45 exit

School 3 The Woodlands

11:30 (30 mins to load in)

12:00 start (60 mins for set up show and strike)

1:00 strike to bus/truck immediately

1:15 critique WILLIS CREW DISINFECTS UNIT SET

1:30 exit

Critiques take place in Lobby or black box.

Bi District Rehearsals and Performances

Performance slots will be **Alpha by Title**.

Director's meeting will be March 24th at 7:00 pm via zoom. Link will be emailed.

Contest on March 25th beginning at 8:00 am. (I will fill this in as schools advance)

District Position 1		District Position 6	
District Position 2			
District Position 3			
District Position 4			
District Position 5			

School 4 Willis

1:15 (30 mins to load in)

1:45 start (60 mins for set up show and strike)

2:45 strike to bus/truck immediately

3:00 critique WILLIS CREW DISINFECTS UNIT SET

3:15 exit

School 5 Grand Oaks

3:00(30 mins to load in)

3:30 start (60 mins for set up show and strike)

4:30 strike to your bus/truck

4:45 critique WILLIS CREW DISINFECTS UNIT SET

5:00 exit

School 6 Oakridge

4:45 (30 mins to load in)

5:15 start (60 mins for set up show and strike)

6:15 strike to bus/truck

6:30 critique WILLIS CREW DISINFECTS UNIT SET

6:45 exit.

Dressing/restroom room is available for touch ups during load in.

The three advancing schools from the contest will perform in the order of position.

Official Rehearsals for Bi-District: Alpha by Title

12:00 on 3/22/21	1	12:00 on 3/23/21	3	12:00 on 3/24/21	5
3:15 on 3/22/21	2	3:15 on 3/23/21	4	3:15 on 3/24/21	6

If any changes to the rehearsal schedule are necessary, that must be worked out between the two schools that agree to switch, and the contest manager needs to be informed by **both** schools of the change as soon as possible.

School 1

8:00- entering PAC load in. They should come in full costume and make up.

8:30 start 60 mins for set up, show and strike.

9:30 Strike to bus/truck immediately.

9:45 critique. WILLIS CREW DISINFECTS UNIT SET

10:00 exit

School 2

9:45 (30 mins to load in)

10:15 start (60 mins for set up, show and strike.)

11:15 strike to your bus immediately

11:30 critique. WILLIS CREW DISINFECTS UNIT SET

11:45 exit

School 3

11:30 30 mins to load in

12:00 start (60 mins for set up show and strike)

1:00 strike to bus/truck immediately

1:15 critique WILLIS CREW DISINFECTS UNIT SET

1:30 exit

School 4

1:15 (30 mins to load in)

1:45 start (60 mins for set up show and strike)

2:45 strike to bus/truck immediately

3:00 critique WILLIS CREW DISINFECTS UNIT SET

3:15 exit

School 5

3:00(30 mins to load in)

3:30 start (60 mins for set up show and strike)

4:30 strike to your bus/truck

4:45 critique WILLIS CREW DISINFECTS UNIT SET

5:00 exit

School 6

4:45 30 mins to load in

5:15 start (60 mins for set up show and strike)

6:15 strike to bus/truck

6:30 critique WILLIS CREW DISINFECTS UNIT SET

6:45 exit.

Critiques take place in Lobby or black box.

Dressing/restroom room is available for touch ups during load in.

District Information

Official Rehearsals

A host student will meet you and your company at the loading dock door on the side of the PAC parking lot, located on highway 75. Try your best to be **15 minutes before your scheduled rehearsal time**. The host will give you instructions, answer questions, and assist you in the unloading and setting up for your rehearsal. Following the rehearsal, he/she will show you where to store properties. Please try and keep as many personal items on the bus as possible. (backpacks, purse, food)

In the Willis High School Auditorium it is not permitted to walk on, sit on, jump over the lip around the front of the stage unless it is called for in the blocking or the play. Please use the stairs at the sides of the apron to access the stage from the house. The only food and drink permitted in the theatre are those used in the action of the play. Fire and smoke effects are only permitted with permission from the auditorium manager prior to the rehearsal.

To avoid any questions during the competition, remember that all uses of the basic set must be fully disclosed to the contest manager (or his designee) at the official rehearsal. Unauthorized or undisclosed use of the basic set may be considered a violation. The contest manager shall make any decision concerning the use of the basic set and that decision shall be final.

Spike Tape: you will be given a roll of spike tape. Tape will pull up the paint on our floor, so keep your pieces a reasonable length.

A complete run-through of your play may not be possible during your rehearsal. You will find your rehearsal period of greatest value if you spend your time on difficult scenes, transitions, combat, and technical matters. The Willis High School technicians will be available to assist you with the lighting and other technical aspects.

Performance Information

Admission to the Performances

Only those who have traveled with your cast and crew are permitted into the audience. Administrator, bus drivers, chaperones and alternates. Social distancing and masks are REQUIRED.

AT WILLIS HS:

The parking lot where the PAC is located is on highway 75. Bus dismissal demands a large portion of the lot 2:00pm. There will be **cones** you may park your vehicle behind. It is the area closest to Turner Elementary. After dismissal the lot is available again.

**** March 12th we have an early release day, dismissal time at 12:45, so no vehicles in the middle of the lot by 12:00. Your bus or truck can park on behind the **cones**. The area closest to Turner Elementary.

One Act Play Handbook

Please review the information found in the U.I.L. OAP Handbook.

[Theatre Section of the Constitution & Contest Rules](#)

[Academic](#)

[Resources and Forms](#)

<https://www.uil texas.org/policy/covid-19/2020-2021-uil-covid-19-risk-mitigation-guidelines>

Willis High School Staging

Link to set and light plot

A. Lighting

Our Light board is a Philips Strand Lighting Neo . All lights are LED so the cyc lights can have a difference in the curve(**at times an abrupt switch from colors**) Lights will be pre-set to cover 13 neutral color acting areas: 5 across the front of the stage (proscenium to proscenium), 4 upstage of the proscenium, 4 across upstage. There are also lights to the side of the proscenium on both sides of the stage. There will also be 3 full stage color washes: Red, Green and Blue as well as 3 center stage color washes or Red, Green, and Blue. There is a cyc and the following colors are programmed, Orange, Green, Red, Blue, White, Purple. Lights cannot/should not be re-set for any one play. Each area will be independently controlled. The intensity of light can be regulated to suit your needs, but elaborate effects cannot be provided. There are two follow spots located in the booths on the balcony. Your school will be allowed to run lights and sound for your production. These are located beside each other but are not the same space. The light cues can be recorded. We will furnish a lighting technician to be with you in the booth, if needed. Cues can be stored on your own Flash Drive if you feel it is necessary or there will be a file saved in the computer specifically for your production.

B. Properties and Set

The approved U.I.L. set will be available at the contest site. This consists of: 4 two-fold flats; 4 three-fold flats; 2 four foot pylons; 2 six foot pylons; 2 eight foot pylons; 2 two foot step units; 2 four foot step units; 2 four x four platforms; 2 four x eight platforms; 4 one x one foot platforms; and 2 four x four ramps. Doors and windows are available at this contest site. The UIL set will be placed upstage behind the cyc. Most set pieces and props will be stored stage left in the shop area. You will strike directly to your bus or truck. Remember WHS has early dismissal on March 12th and there should be as little traffic from us as possible in the 75 parking lot by 12:00

C. Makeup and Costumes

Makeup and costumes should be on when you arrive for the contest. The dressing room in the black box is available for touch ups.

D. Sound

We have a CD player in our booth. There will also be a plug for MP3 or computer input and a usb, bluetooth is also a possibility, this is a Denon system. There will be a technician present, if needed. The Board is a Yamaha TF5. We also have a Dante system(digital), so please do not plug in XLR adapters

HEADSETS: We have ClearCom 5 wireless headsets and 6 wired.

E. Stage and Playing Space

The spike tape WILL pull up the paint on the floor. So please make sure you use it with that in mind. The stage is 60 foot wide from brick wall to brick wall. The apron is 10 feet deep from the grand line. The stage is 53 feet deep from the cyc to the grand. Set and strike can take place with the curtain open and UIL set pieces can be set in front of the Main Drape. There will be no fire, flame, tobacco, or burning of anything in the auditorium. The only food and drinks allowed in the Auditorium are those used on stage in the performance of the play. We are providing spike tape for your needs. No double spiking will be permitted. Please limit the length of any one piece of spike tape to no more than 2 inches. The rope to open and close the Main Drape is located stage right. You are permitted to open and close it yourself or if necessary, our technicians can do this for you. Your technician should wear **gloves**. DO NOT put tape on the travel rope to spike it. You may put spike tape on the stage floor to set its location. Host technicians will set your curtains with your stage manager at the end of your seven minute set up. They will open them for you prior to your strike. There are numerous electrical plugs off stage. Fog, Haze, and Smoke effects can be permitted in the WHS PAC with permission from the auditorium manager. This is a tentative yes, we have tested a hazer. We have furnished stage dimensions.

F. House Area

The theatre seats just over 1000 guests. These seats are on two levels with two center aisles. There is no food, drink, or tobacco permitted in the Willis High School Performing Arts Center. We normally would reserve an area near the hall entrance for the directors /alternates of the performing company. Due to the covid protocol, there will be no audience other than directors and those who travel with you.

<https://docs.google.com/document/d/1bOserjVaXFD05HQTqz-1DwZmFn7VRldknVyNvzcllpw/edit?usp=sharing>

Procedures

During rehearsal, the theatre and stage must be entirely clear of all persons except the rehearsing company and the host crew. Please have one director assigned to be in charge of all wallets, watches, jewelry, cell phones, etc. during rehearsals and contest. Willis High School will not be responsible for valuables. Hand sanitizer stations will be set up in various locations. Arrive early to keep the schedule flowing. Unit Sets will be sanitized between each company's arrival as will headsets and light and sound booths.

All schools should avoid physical show gifts this year.

Contest Load In/Out

Schools will be unloading as the previous school is getting critiqued. Do not park vehicle in front of the loading door until a helper gives you the **okay**. Unload at the scene shop on the side of the PAC. WAIT FOR HELPER TO DIRECT.

When given the okay you may unload to the sidewalk. When the roll up door opens, you may move your set inside to the scene shop and wait for directions. After your rehearsal, there will be a box assigned to your school. **You may leave your props here**. This would be beneficial if you are concerned about unloading on the day of the contest.

Pull up to side area of PAC (helper will direct you)

Pull up to the loading door (helper will give the okay)

Stay there for the duration of show

Strike directly to the loading area

Move vehicle to front of PAC behind the cones

Keep in mind Dismissal time on March 12 is 1:05 and March 25th 3:05..

Load Out. When your show is over on contest day, **strike directly to the scene shop**. Have your bus/truck ready. You have 15 mins to load before your critique begins. It might be helpful to have students load as much as possible in the 15

minutes and then leave your alternates to complete the task. Directly after the critique, you will load your students in your bus and leave.



Dressing Room

You will come in costume and make up. The make up room in the black box will be available to you for touch ups.

Director's Meeting:

This year, the directors meeting will be held via zoom on March 11th at 7:00 pm. Link will be emailed.

Bi District directors meeting will be held via zoom on March 24th at 7:00 pm. Link will be emailed.

Performances

This year, you will begin your show 30 minutes after you have unloaded. Within that 30 minutes, you must be unloaded and can perhaps perform a slight touch up to costume and makeup. Please come warmed up and focused.

Awards and Critiques

Awards will be delivered to your school, either by shipping or in person.

Critiques will happen **directly** after you have loaded your truck or bus. The critique will be 15 minutes.

Awards will be at 8:30 virtually.

From the Leaguer: *“**The Decision:** Accepting the judge’s decision requires graciousness on the part of those who advance as well as those who don’t. Receiving an award in the One-Act Play Contest is no reason for a riotous demonstration. Applause is the ONLY acceptable method to pay tribute in the theatre. Your task as director is to so instruct your students on acceptable theatre etiquette.”*

Note:

Food and drinks are not allowed in the auditorium. There are fast food places within 5 to 10 mins of the school.

It is our aim to run a smooth competition. Anything we can do for you within our bounds, we will attempt. We want you to have a positive experience and for your students to depart from our campus with a sense of dedication and pride.

REMINDERS

By February 14 for the District Contest

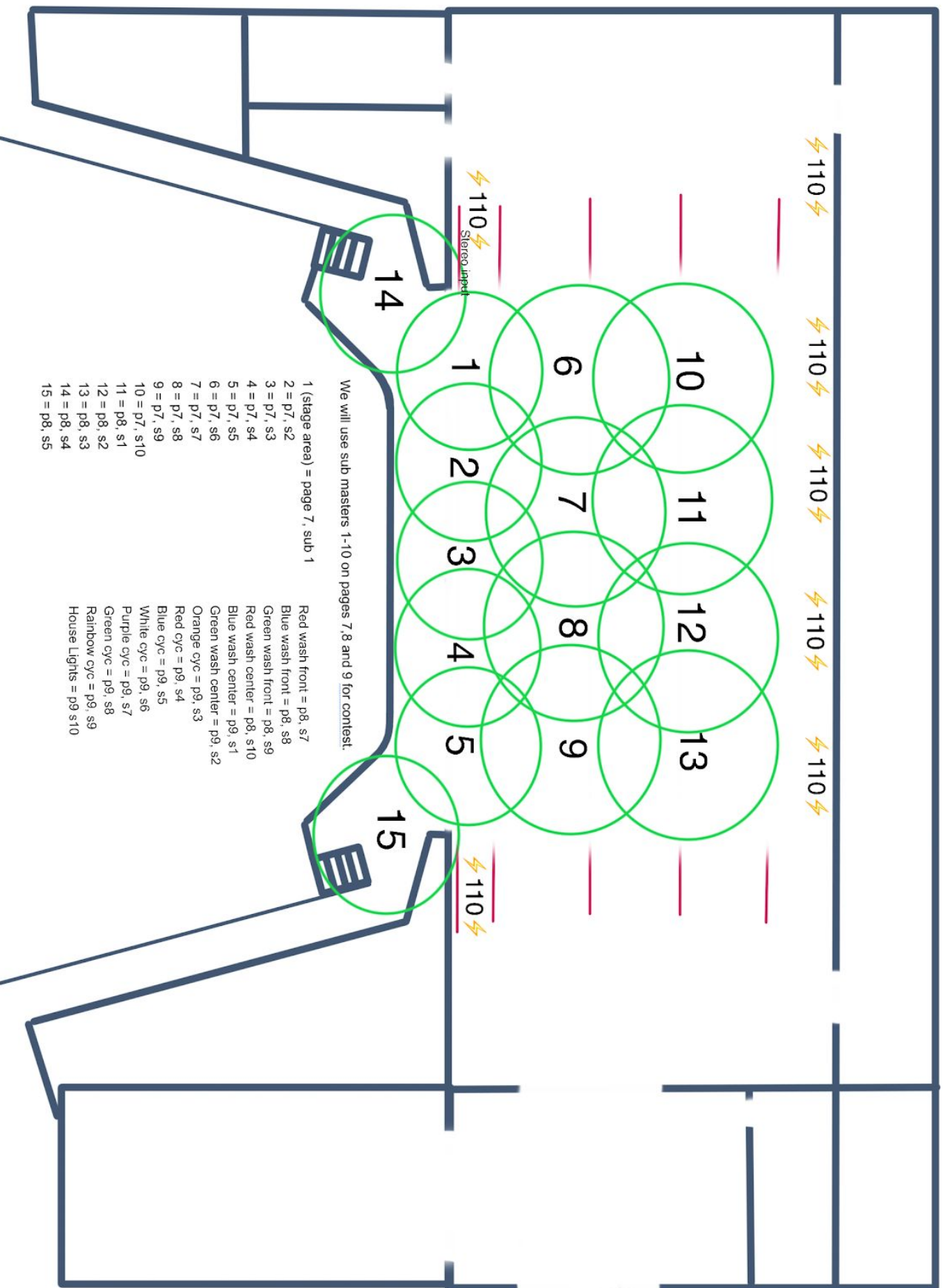
- Enter your title on the UIL Spring Meet Entry System.
- Complete online eligibility requirements in the Spring Meet Entry System. .
- Send **SIX** copies of your cut and **highlighted judge's** script to Casey Matlock at Willis High School to be sent to the District Judges and Bi District. Please make these copies of the script anonymous in case it is preferred. Just have District 13 region 2 listed on the script, not School or Directors' names. All scripts will be returned to the non-advancing schools at the end of the contest, if possible. Make sure the scripts will arrive **by February 24th**.
- Send program copy (you will be emailed a blank form) with program information and characters in order of appearance **to Casey Matlock**-Changes can be made until **March 3rd**-at noon. Cast and Substitute changes can still be made according to UIL policy but may not be reflected in the audience program. The judges will be informed of all substitutions by the Contest Manager.

At the Official Rehearsal for All Contests.

- Proof of royalty payment for performance of the play at this contest. This may be in the form of a letter from the principal acknowledging that royalties have been paid, a copy of the check or purchase order, when provided, a receipt from the publisher.
- Publisher or author permission is required. (Unless the script is in open domain)
- Permission to cut the approved script.
- UIL permission to produce plays not on the approved lists, if applicable.
- UIL approval for additions to the basic set, if any.
- A clearly marked and **highlighted integrity** script showing all cuts and approved adaptations.
- Have handguns, weapons, flame/fire units, etc, that need to be checked.
- The music log.
- A signed and dated "Standards Compliance Form."
- Coordinate and assure the safety of entrances from the house or lobbies.
- Have any other pertinent information.

If you have any questions or concerns about any information in this packet or need clarification email Casey Matlock or Ken Labonski.

WHS PAC



We will use sub masters 1-10 on pages 7, 8 and 9 for contest.

- 1 (stage area) = page 7, sub 1
 - 2 = p7, s2
 - 3 = p7, s3
 - 4 = p7, s4
 - 5 = p7, s5
 - 6 = p7, s6
 - 7 = p7, s7
 - 8 = p7, s8
 - 9 = p7, s9
 - 10 = p7, s10
 - 11 = p8, s1
 - 12 = p8, s2
 - 13 = p8, s3
 - 14 = p8, s4
 - 15 = p8, s5
- Red wash front = p8, s7
 - Blue wash front = p8, s8
 - Green wash front = p8, s9
 - Red wash center = p8, s10
 - Blue wash center = p9, s1
 - Green wash center = p9, s2
 - Orange cyc = p9, s3
 - Red cyc = p9, s4
 - Blue cyc = p9, s5
 - White cyc = p9, s6
 - Purple cyc = p9, s7
 - Green cyc = p9, s8
 - Rainbow cyc = p9, s9
 - House Lights = p9 s10

WHS PAC

