

6A- Region III, Area 2, Bi-District A
(Districts 21 & 22)
Saturday, March 24, 2018

UIL One-Act Play Contest



San Jacinto College- South Campus
Marie Flickinger Fine Arts Building (S15)
13735 Beamer Rd.
Houston, TX 77089

Table of Contents:

Contact Sheet

District 22 6A UIL One Act Play Schedule

District 22 6A UIL One-Act Play Contest

San Jacinto College South

Campus Map

Marie Spence Flickinger Fine Arts Building

Building Map/Site Map

Stage Details

Ground Plan

Elevation(s)

Line Set Layout

Lighting

Lighting Area Layout

Magic Sheet

Cue Sheet

Lighting/Sound Details

Deadlines

Contact Sheet

San Jacinto Contacts

Name	School/Position	Email	Telephone
Christina Potts	Fine Arts Department Chair	christina.potts@sjcd.edu	(281)929-4617
Loura de los Santos	Administrative Assistant	loura.delossantos@sjcd.edu	(281)929-4617
Kevin Holden	SJC-South Theatre Director	kevin.holden@sjcd.edu	(281)929-3483
Frank J. Vela	Site Host/Coordinator	frank.vela@sjcd.edu	(281)929-4660
Anthony Contello	Scene Shop Technician	Anthony.contello@sjcd.edu	(

UIL Contest Contacts

Name	School/Position	Email	Telephone
Gary Cooper	Contest Manager	cgcooper@central.uh.edu	(281)757-5453

UIL OAP Bi-District Judges

Name	Position
Rachel Mattox	Acting Judge
Don Luna	Panel Judge
Jami Hughes	Panel Judge

Bi-District 22 & 21 6A UIL One –Act Play Contest Schedule

Location: San Jacinto College- South Campus
Marie Spence Flickinger Fine Arts Building (S15)
13735 Beamer Rd.
Houston, TX 77089

Rehearsals/Tech Order

Friday, March 23, 2018

2:00pm – 3:30pm *District 21 School A*
3:45pm – 5:15pm *District 21 School B*
5:30pm – 7:00pm *District 21 School C*

Saturday, March 24, 2018

9:00-10:00am *District 22 School A*
10:15-11:15am *District 22 School B*
11:30-12:30pm *District 22 School C*

Performance Order

Saturday, March 24, 2018

1:00pm - 2:00pm	Director's Meeting	Conference Room
2:30pm – 3:30pm (S15.151)	School #1 (22B)	Proscenium Theatre
3:30pm - 4:30pm (S15.151)	School #2 (22A)	Proscenium Theatre
4:30pm - 5:30pm (S15.151)	School #3 (21C)	Proscenium Theatre
5:30pm - 6:30pm (S15.151)	School #4 (22C)	Proscenium Theatre
6:30pm - 7:30pm (S15.151)	School #5 (21B)	Proscenium Theatre
7:30pm - 8:30pm (S15.151)	School #6 (21A)	Proscenium Theatre
8:30pm- 9:30pm	Judges Decisions	TBD
9:30pm- 10:15pm (S15.151)	Awards Ceremony	Proscenium Theatre
10:15- 11:15pm (S15.151)	Judges Critiques	Proscenium Theatre

Room Assignments

Saturday, March 24, 2018

Green Room	School #1	Black Box	School #5
Boy's Dressing Room	School #2	Lecture Hall	School #6
Girl's Dressing Room	School #3		
Black Box Dressing Room	School #4		





SAN JACINTO
COLLEGE
SOUTH

- 1 Science/Allied Health

- 6 Welcome Center
- 7 Academic Wing-North
- 8 Academic Hall
- 9 Academic Wing-South
- 10 Library
- 11 Student Center
- 12 Interactive Learning Center
- 13 Jones Technical Building
- 14 Auto/Body Shop
- 15 Fine Arts Center

- 21 Gymnasium
- 22 Children's Center
- 23 Industrial Technology Center
- 24 Tennis Courts
- 25 Softball Field
- 26 Soccer Field

- M1 Deliveries/Maintenance



Designated Campus Entry



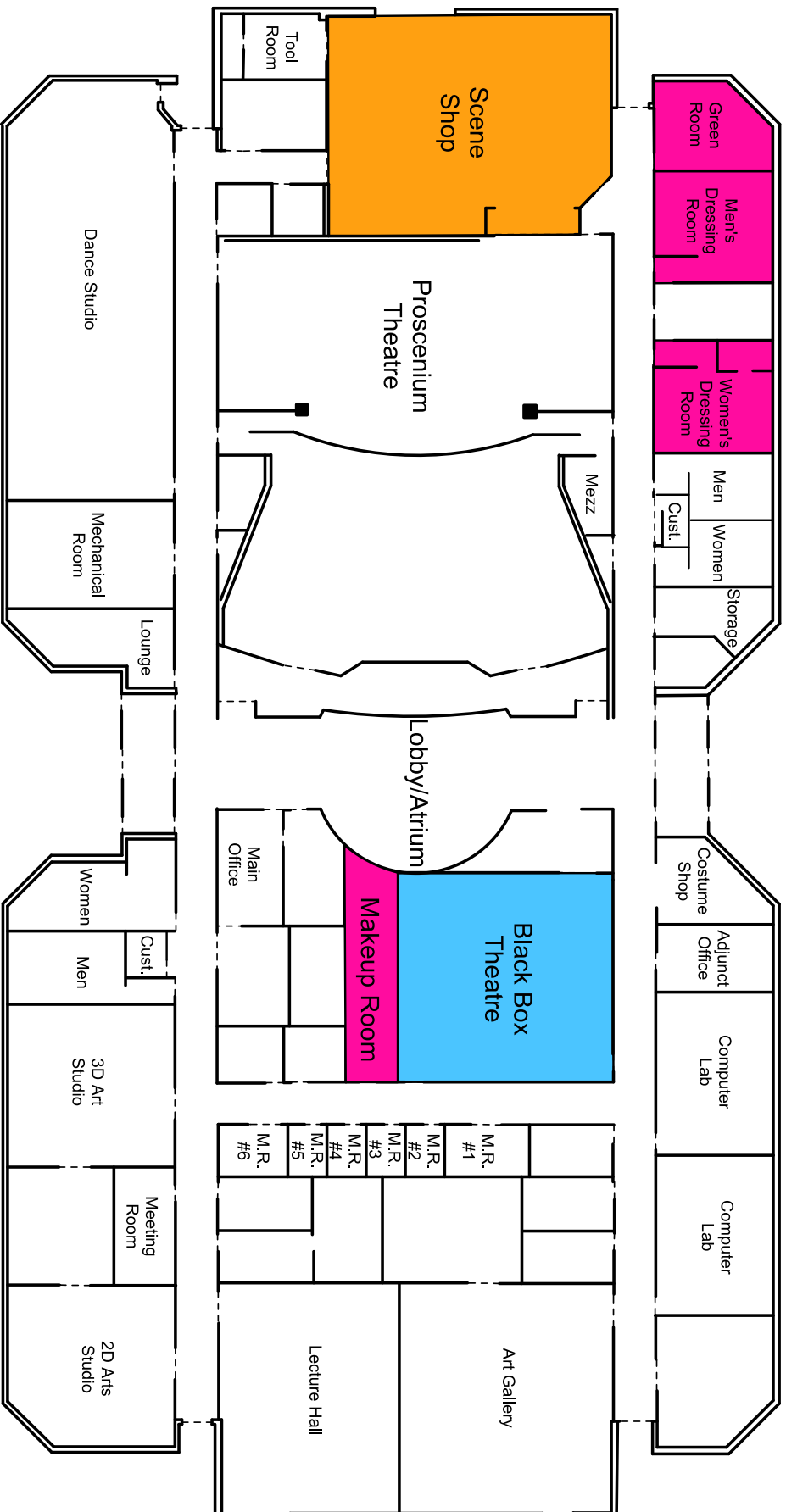
Emergency Assistance Phone

San

Jacinto College South Campus Map

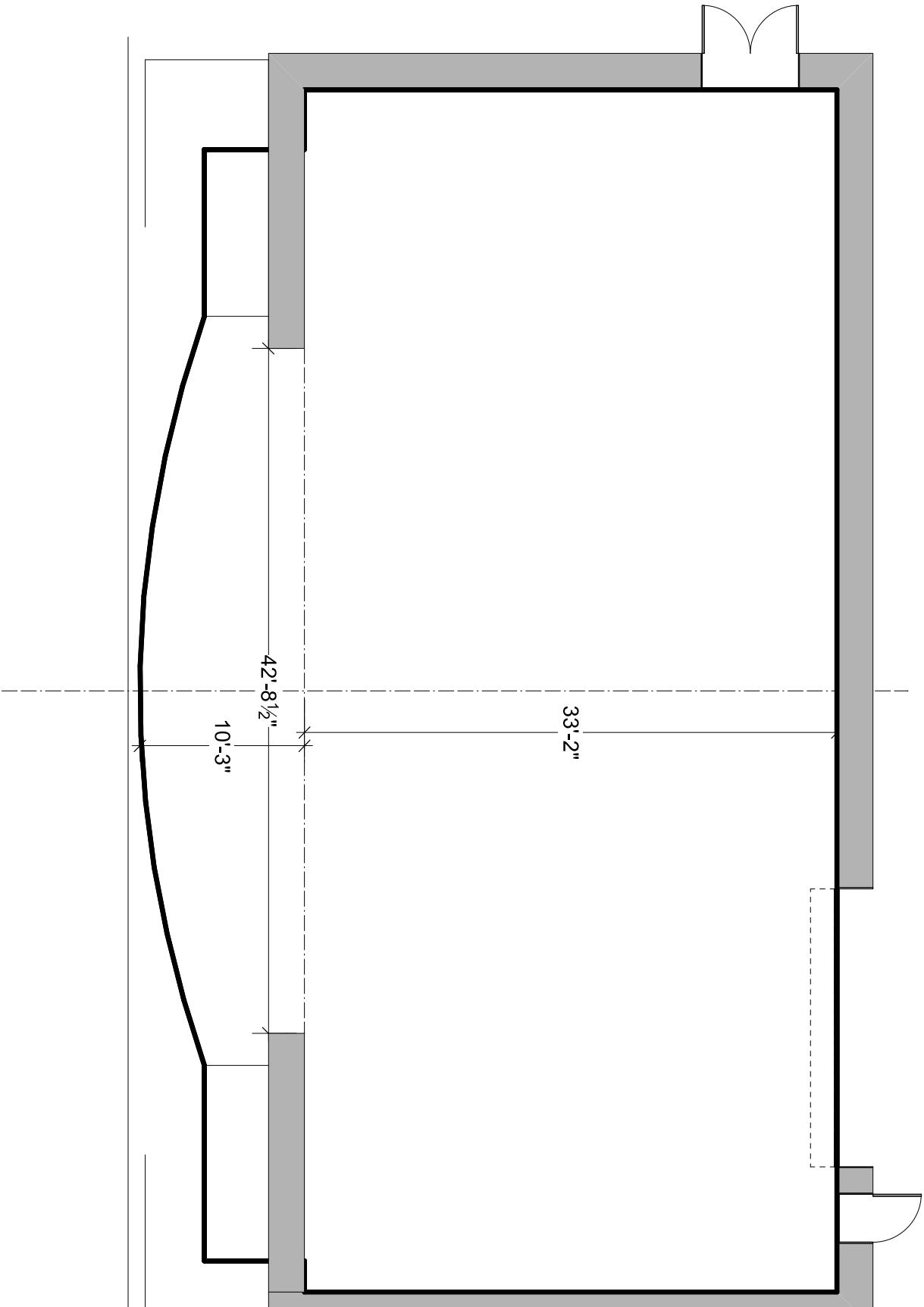
- The Proscenium Theatre is located in Building 15.
- Contestants and Attendees may park in Parking Lot P16.
- Do not park in spaces labeled *Staff*. You will be towed at owner's expense.

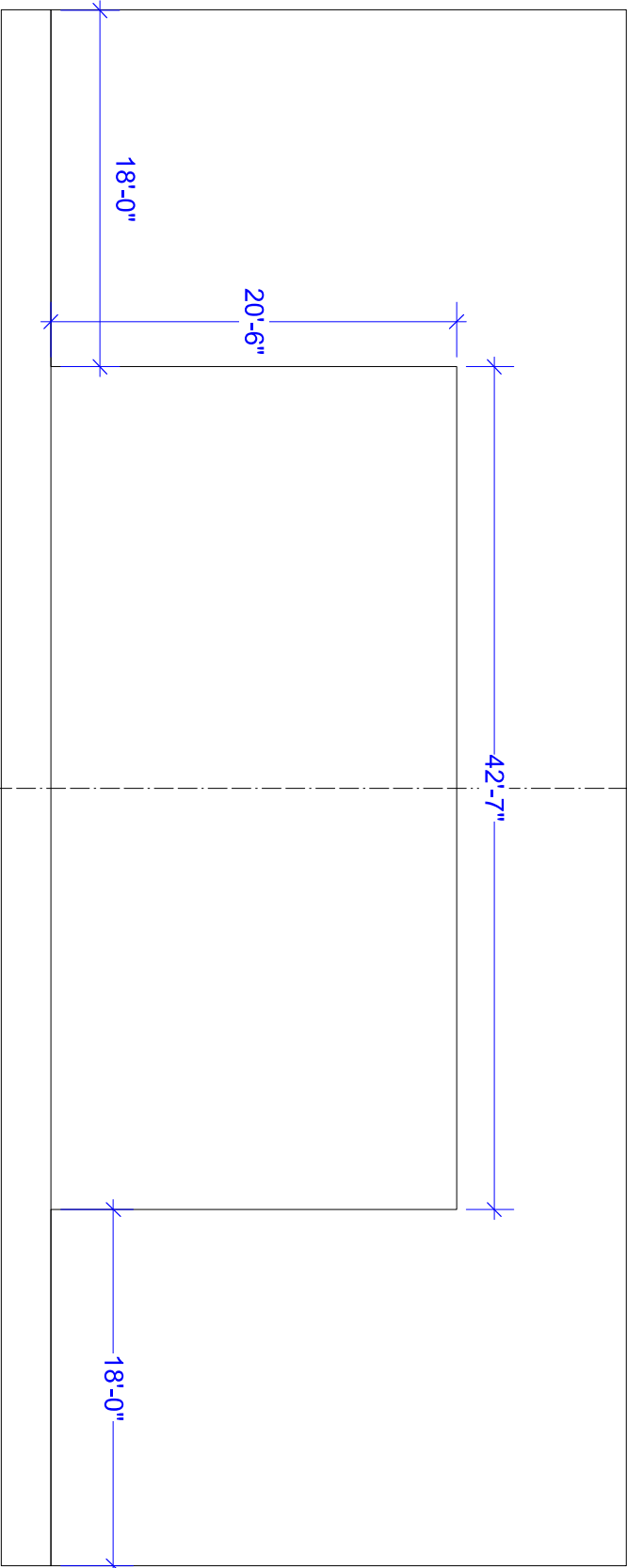
Marie Spence Flickinger Building



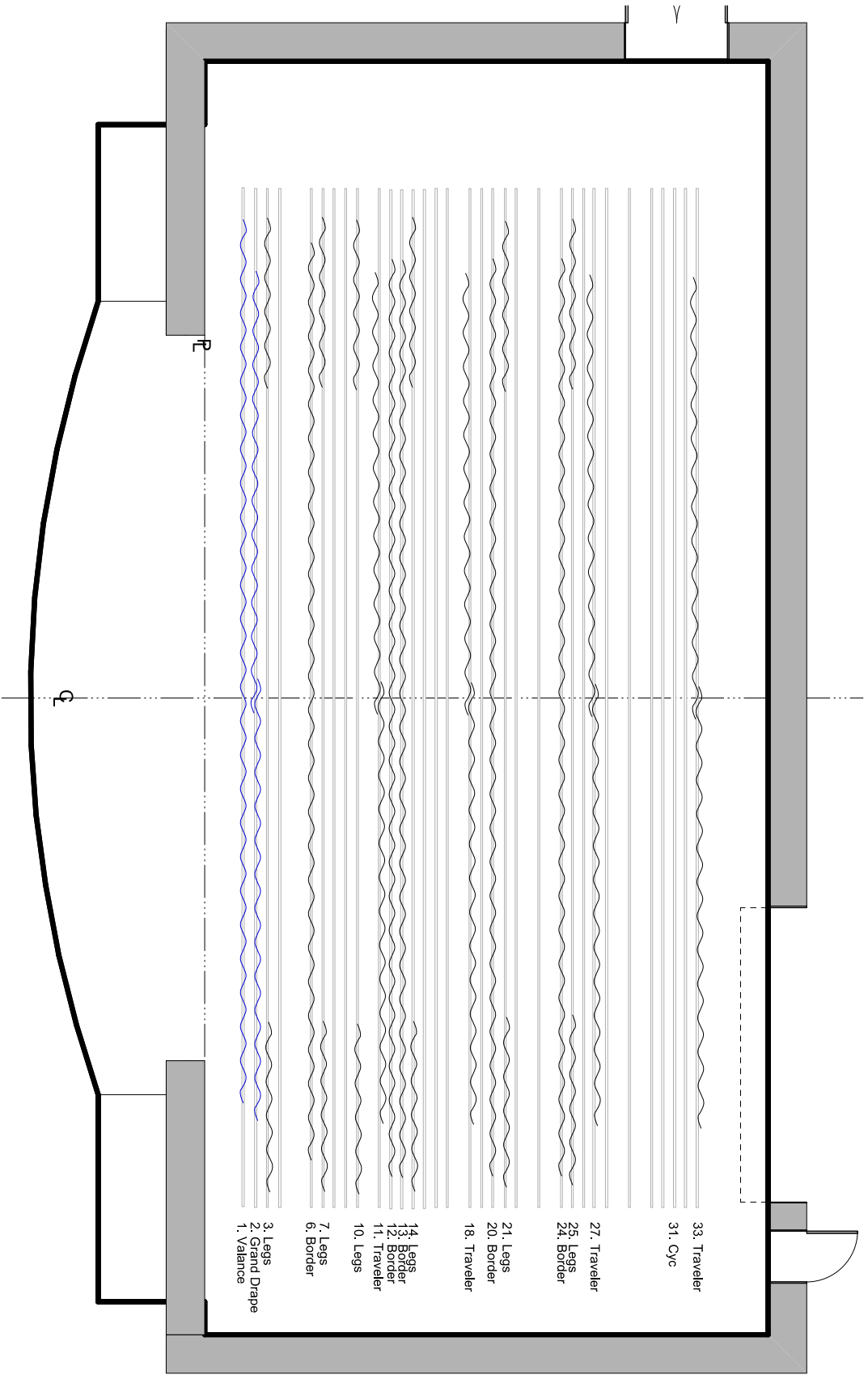
Dressing Rooms
 Load-in/ Storage Area

Performance Area
 Contest Manager's Meeting





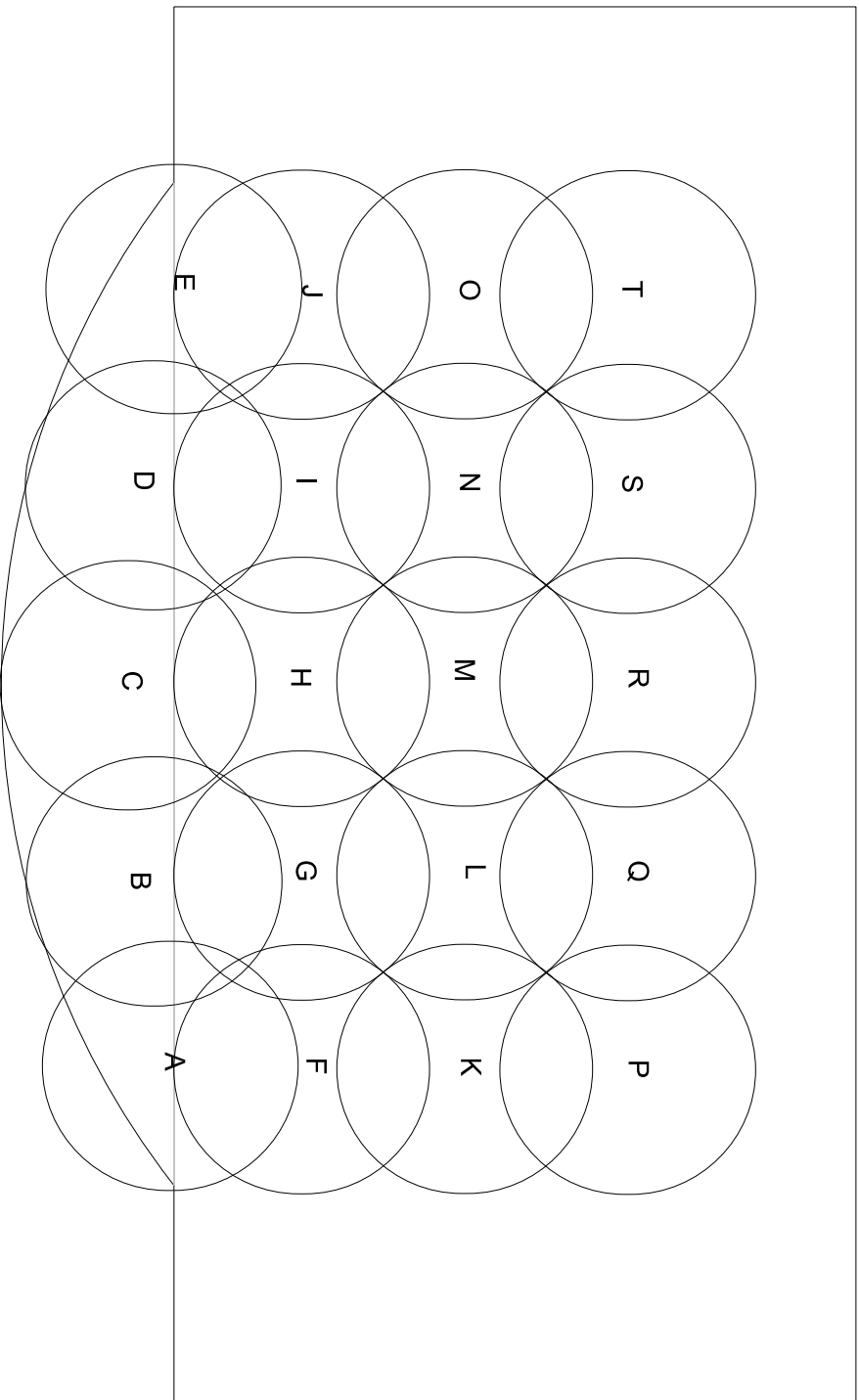
C

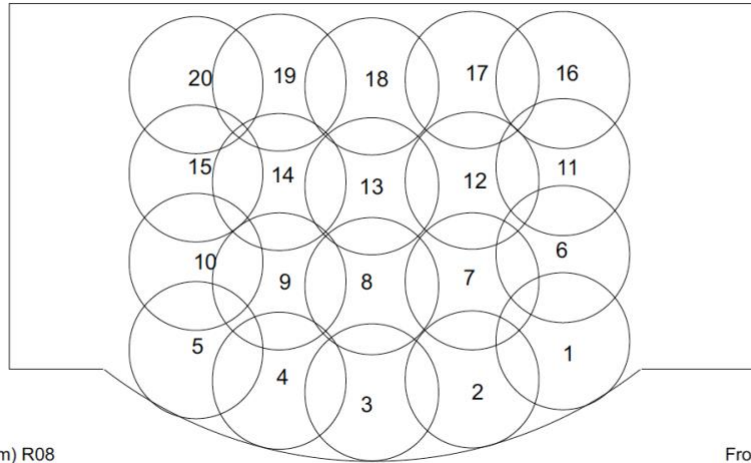


Marie Flickinger Proscenium Theatre
Curtain Ground Plan

Line Set	Description	Distance from Plaster Line
1	Border	2'4"
2	Grand Drape	3'0"
3	1st Leg	3'8"
4	1st Electric	4'5"
5	Scrim	6'4"
6	2nd Border	7'0"
7	2nd Leg	7'8"
8	Black Scrim	8'4"
9	2nd Electric	9'0"
10	3rd leg	10'4"
11	Down Stage Traveler	11'0"
12	3rd Border	11'8"
13	4th Border	12'4"
14	4th Leg	13'0"
15		13'8"
16	3rd Electric	14'4"
17	Projection Screen	15'8"
18	Mid Line Traveler	16'4"
19		17'0"
20	Border #5	17'8"
21	Leg #5	18'4"
22	4th Electric	19'8"
23	N/A	21'0"
24	5th Border	21'8"
25	5th Leg	22'4"
26	Cyc on B	23'0"
27	Mid-Upstage Traveler	23'8"
28	5th Electric	25'0"
29		26'4"
30	Scrim	27'0"
31	Cyclorama	27'8"
32		28'4"
33	US Traveler	29'0"

UJL OAP
LIGHTING AREAS





Front Light (Warm) R08

20	19	18	17	16
15	14	13	12	11
10	9	8	7	6
5	4	3	2	1

Front Light (Cool) R60

50	49	48	47	46
45	44	43	42	41
40	39	38	37	36
35	34	33	32	31

RGB LED Cyc Lights: Ch. 141

House Lights: Ch. 191

Stage Work Lights: Ch. 192

Parked: Ch. 501 & 502

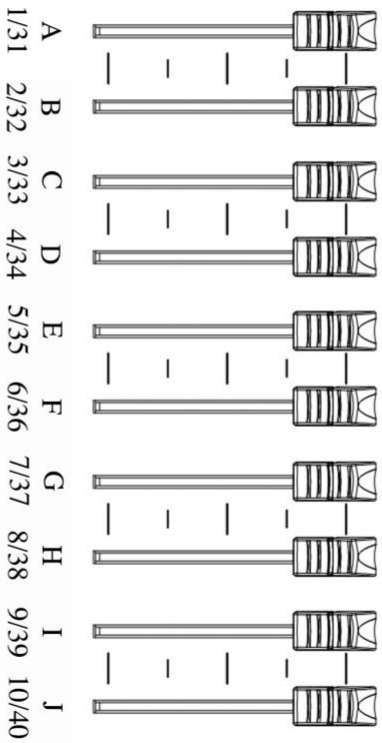
Down Light Spot Specials (N/C)

159	158	157
156	155	154
153	152	151

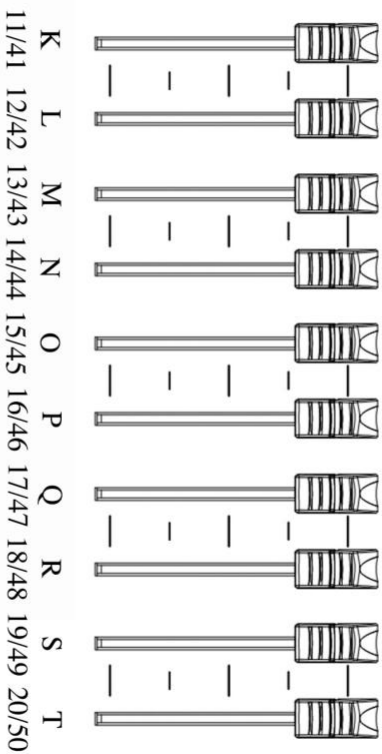
RGB LED Down Light

135	134	133
132	131	130
129	128	127
126	125	124
123	122	121

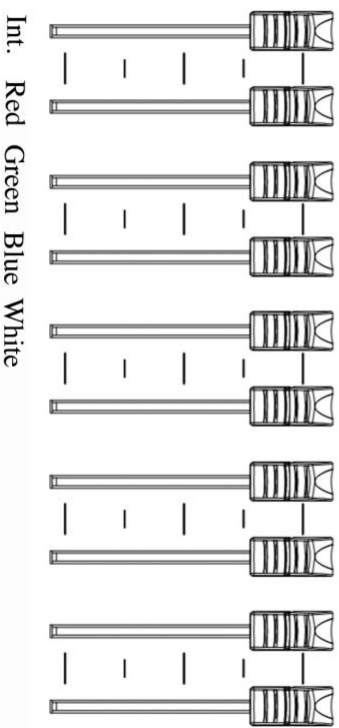
FRONT LIGHT AREA



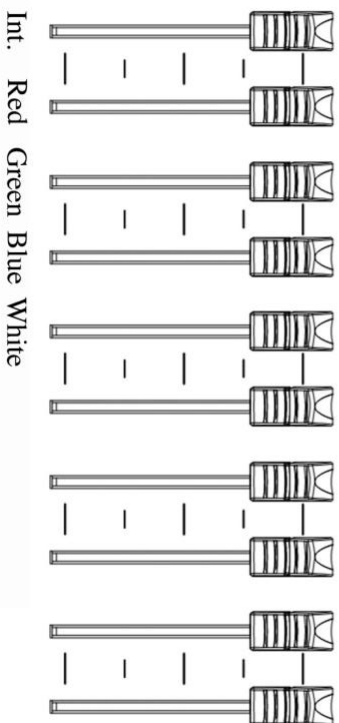
FRONT LIGHT AREA



DOWN LIGHT WASH (FULL STAGE)



CYC



ETC ION

UIL OAPS
Lighting Cue Sheet

Indicate the percentage of intensity for each area in each cue. Percentages should be indicated in increments of 5, from 10% to 100% intensity.

Cue #: Fade:

Front Light Faders (Warm/Cool)

1	2	3	4	5	6	7	8	9	10	11	12	13	14	15	16	17	18	19	20	

Down Light (Full Stage)

Int.	Red	Green	Blue	White

Cyc

Int.	Red	Green	Blue	

Blackout

Cue #: Fade:

Front Light Faders (Warm/Cool)

1	2	3	4	5	6	7	8	9	10	11	12	13	14	15	16	17	18	19	20	

Down Light (Full Stage)

Int.	Red	Green	Blue	White

Cyc

Int.	Red	Green	Blue	

Blackout

Cue #: Fade:

Front Light Faders (Warm/Cool)

1	2	3	4	5	6	7	8	9	10	11	12	13	14	15	16	17	18	19	20	

Down Light (Full Stage)

Int.	Red	Green	Blue	White

Cyc

Int.	Red	Green	Blue	

Blackout

Cue #: Fade:

Front Light Faders (Warm/Cool)

1	2	3	4	5	6	7	8	9	10	11	12	13	14	15	16	17	18	19	20	

Down Light (Full Stage)

Int.	Red	Green	Blue	White

Cyc

Int.	Red	Green	Blue	

Blackout

Cue #: Fade:

Front Light Faders (Warm/Cool)

1	2	3	4	5	6	7	8	9	10	11	12	13	14	15	16	17	18	19	20	

Down Light (Full Stage)

Int.	Red	Green	Blue	White

Cyc

Int.	Red	Green	Blue	

Blackout

Lighting Details

The Marie Spence Flickinger Proscenium Theatre utilizes the ETC ION with the most up to date software version [7.0.0.9.0.1] and fixture Library version [2.5.1.9.0.6].

Audio Details

-The Marie Spence Flickinger Proscenium Theatre utilizes an iMac 27in computer and runs OS X Yosemite v. 10.10.5.

-The audio program we use to run audio cues is QLab v3 Pro Audio. Audio files types accepted are: AIFF, WAV, CAF, AAC, MP4, MP3.

For further information and full capabilities of the software, please click on the link below:

<http://figure53.com/docs/qlab/v4/audio/audio-cues/>

-A 3.5mm (small headphone) jack will be available to allow the competing schools the capability of utilizing their own personal audio source (Mac, PC, iPod, etc.) during the rehearsals and competition.