

March 10, 2018

Dear OAP Directors,

Congratulations on advancing to Bi-District OAP! It's a pleasure to act as your Contest Manager; I'm looking forward to working with all of you.

Enclosed you will find all the pertinent information for contest. If I've left anything out or you need further clarification, please don't hesitate to call me.

If you have any substitutions to your eligibility forms, please get that to me as soon as possible. Please indicate any changes so that the program will accurately reflect each student's participation.

On Wednesday, March 21st we will meet at Morton Ranch High School at 6:00 PM for a walkthrough of the facility. This will give you an opportunity to see the space and ask any questions you have of our site host BK Goodman. This is not required, but if you would please RSVP to me so that I can plan accordingly.

Thank you for your hard work and dedication to the students of theatre in our region. Their association with you and your program will dramatically impact many of their lives.

Again, please do not hesitate to call me if there's anything I can do for you. I wish each of you a successful show.

Sincerely,

Troy D. Menn
Contest Manager
Calvary Episcopal Preparatory
281-342-3161 ext. 210
832-236-6987 (cell)

Bi-District One-Act Play Contest

OF THE UNIVERSITY INTERSCHOLASTIC LEAGUE
Katy Independent School District

Location: Morton Ranch High School
21000 Franz Rd.
Katy, Texas 77449

Mailing Address: Troy D. Menn
1201 Austin
Richmond, Texas 77469

Contest Manager: Troy D. Menn
(832) 236-6987 – cell
(281) 342-3161 ext. 210 - work

Fee: Payable to: **MRHSTAB**
Please bring/send your check for \$400.00 to

BK Goodman, Site Host
c/o Morton Ranch High School
21000 Franz Rd.
Katy, Texas 77449

REHEARSAL SCHEDULE

KISD School 1	Friday, March 23	2:30 – 3:30 p.m.
KISD School 2	Friday, March 23	4:00 – 5:00 p.m.
KISD School 3	Friday, March 23	5:30 – 6:30 p.m.
CFISD School 3	Saturday, March 24	8:00 – 9:00 a.m.
CFISD School 2	Saturday, March 24	9:15 – 10:15 a.m.
CFISD School 1	Saturday, March 24	10:30 - 11:30 a.m.

You may unload your production pieces and wait near the loading dock until your time. The rehearsal schedule will be strictly enforced, so please be on time.

Please bring the following items with you to site rehearsal to submit to the contest manager:

1. State approval of any set additions
2. State approval of a play not on the approved list
3. Evidence of royalty payment
4. Publisher's approval to do a cutting of your play
5. Copy of your play for the contest manager
6. A dated and signed log of incidental sound/music, noted in the script showing the duration of each cue and the cumulative total.

Critic Judge Panel:
Bob Singleton
Dr. Marion Castleberry
Allen Otto

Contest Schedule: Saturday, March 24, 2018

Building Opening:	8:00 a.m.
Directors' Meeting	12:00 p.m. Location: 9 th grade lounge
Tickets	\$10.00 - OAP official cast and crew will receive complimentary entry.

Performances: Approximate times following the first performances. Performances will start as soon as possible.

KISD School 1	1:00 p.m.
CFISD School 3	2:00 p.m.
CFISD School 2	3:00 p.m.
KISD School 3	4:00 p.m.
CFISD School 1	5:00 p.m.
KISD School 2	6:00 p.m.

*Performance order is determined Alpha by title of show, not including articles such as A, The, An, etc.

Dressing Room Assignments:

KISD School 1	Black Box
KISD School 2	Choir Room
KISD School 3	Art Room 1
CFISD School 1	Orchestra Room
CFISD School 2	Band Hall
CFISD School 3	Art Room 2

Load In:	Set pieces, props, etc, will be kept in designated areas, stage left. Please plan to leave these items after your site rehearsal as stage access will not be available Saturday morning.
----------	--

Strike:

Schools will strike to the loading dock during their 7-minute designated time.

STAGE

The Performing Arts Center at Morton Ranch High School (MRHS PAC):

The stage space consists of a wood floor acting area and wing spaces. A polished dark wood apron in front of the Grand Drape fronts the stage. The house seats nine hundred (900) in three lower and three upper seating sections. Following the last performance, the lower sections will be cleared for company seating for awards and critiques. The basic stage dimensions are as follows:

- Proscenium width 48'
- Proscenium height 18'
- Apron depth to US side of proscenium wall 5'-8'
- Depth of acting area from front lip of apron 48' 4"
- Width of acting area US of proscenium wall 50'
- Wing space SR 10'
- Wing space SL 19'9"
- Six(6) leg sets on stage placed at the following distances from the US side proscenium wall, which extend onto the stage 2'-3' from the edge of the acting area:
 - 4'
 - 8'
 - 12'
 - 16'
 - 24'
 - 28'
 - Mid Stage Traveler 20'
 - Upstage Traveler 34' –DOES NOT TRAVEL ONLY FLY

All of the leg sets, up to the upstage traveler, are available to use. Use of cyclorama by arrangement with the Site Director (please call prior to on-site rehearsal). The Grand Drape will be set to open and close in the traveler position.

SOUND

The MRPAC has a complete sound system for each school to use. Control of the in house system will be from the back of the house in the sound and lighting control booths. The system units available for the contest include:

*Aux Sound controlled from booth or back stage right. 1/8" AUX Cable

*CD Player Located in Booth

** A Student Technician will be available to assist if needed.

Wireless headsets will be available for each school to use. Four (4) headsets will be available.

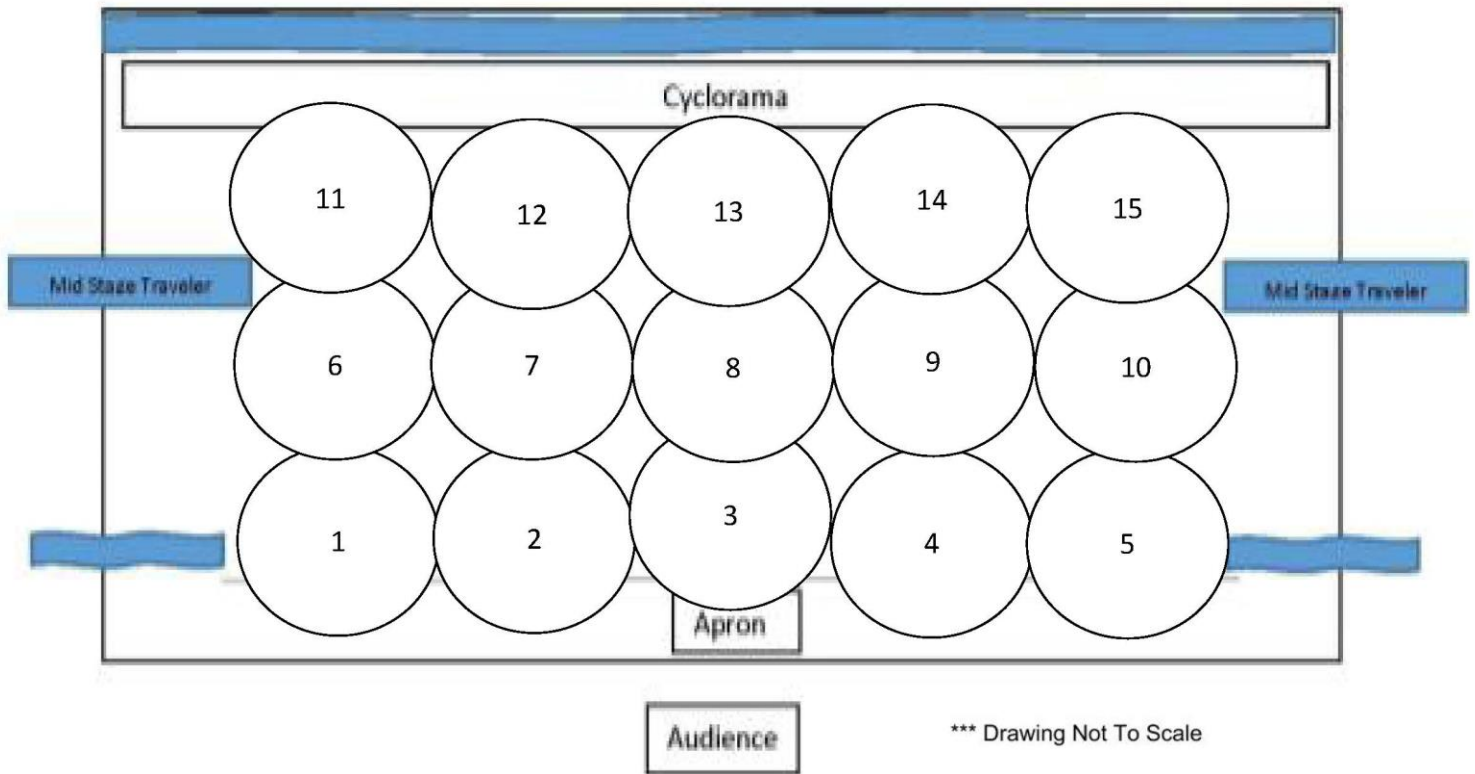
LIGHTING

1. A 15-area light plot will be hung to facilitate lighting areas from the apron to the upstage traveler.
2. LED Color Strips for Washes.
3. Requests for any specials need to be made to the contest manager and site host and are subject to use by all participants. *No request for lighting specials will be granted during rehearsal or on the day of contest.*
4. Any lighting used by the competing school that is not part of the basic light plot must run off of standard 110v electrical current or have the proper adaptors to attach to a standard 3 pin stage plug.
5. Six (6) hanging light tree connector boxes (3 SL and 3 SR) will also be available.
6. Two (2) spotlights located at the back of the house will also be available for use.
7. An ETC ION board will be set up with individual area control and color wash control. The light booth is located at the back of the house.
8. All cues and set ups can be:
 - a. run manually using sub masters and A/B two scene presets or
 - b. recorded on flash driveMRHS will supply Flash Drives for recording purposes. Each Flash Drive will be formatted by the MRHS PAC console before being utilized. One copy will go to the school director and another copy will be kept on site. A MRHS PAC technician will be available in the light booth during rehearsal and performance.
9. A Student Technician will be available to assist if needed.

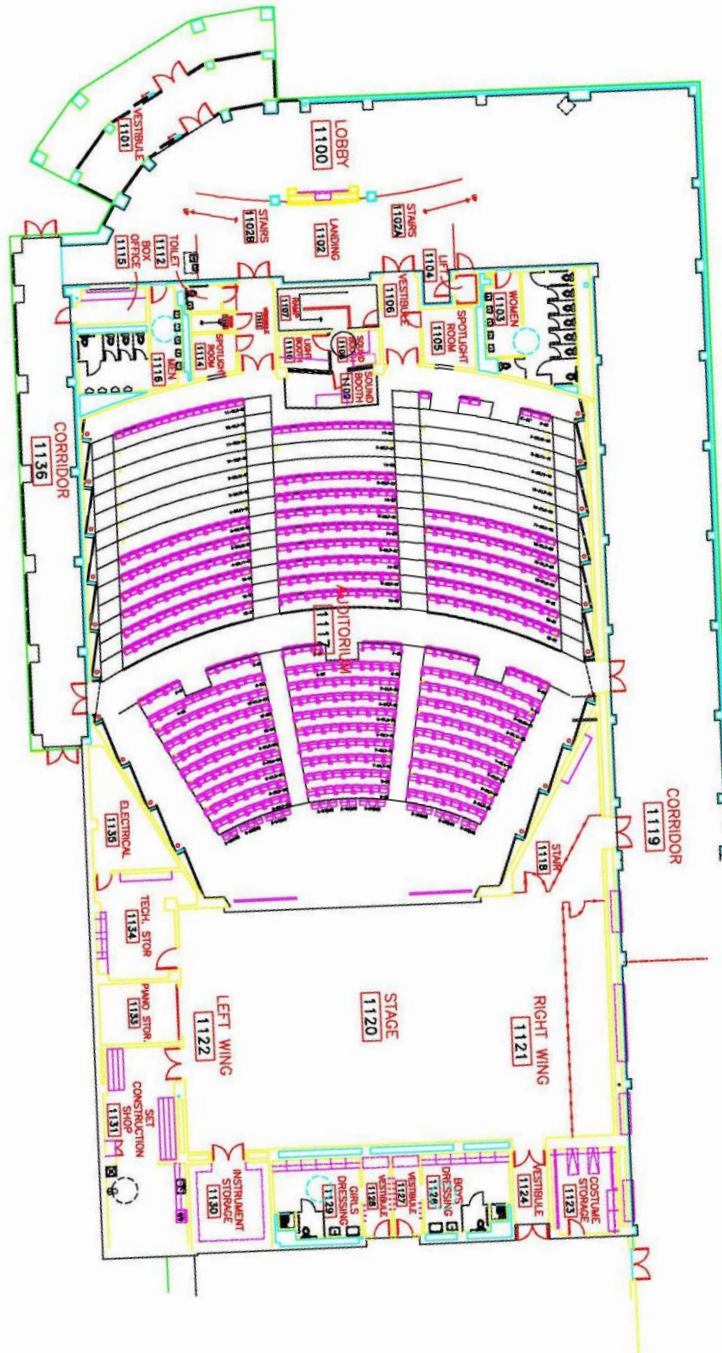
Lighting Console	
ETC ION	
Lighting Areas	
15 Areas SL to SR	2 Front - 1 Back
Areas Saved to Groups	
Group 1 = Area 1	
Areas on Subs	
20 Sub Fader Wing	15 for Areas on subs
LED Color Washes	
Saved to one Address	Address 500
Students will select color from color wheel in MS Controls	
LED Cyc Color	
Saved to one Address	Address 380
Students will select color from color wheel in MS Controls	
Command Line Example	
Area 1, Blue Wash, Red Cyc	Group 1 @ Full, 500 @ Full "Blue", 380 @ Full "Red"
Pre Recorded Light Cues	
We will not pre-record light cues for you.	
Can run board manually if you wish	
Sound System	
Booth operations with CD/AUX	
Backstage Operations with AUX	

APPROVED UNIT SET

Complete approved unit set will be available. Excluding Doors, Windows, and French Doors. Companies who use UIL Additional pieces will need to bring them and make them available to all other companies.



MRHS PAC LAY OUT



PARKING INFORMATION

