

# U.I.L. REGION IV AREA 1 – 4A 2018 ONE-ACT PLAY AREA CONTEST

***Congratulations on advancing from Bi-District competition  
and welcome to the Area Contest!***

**Contest Site: Canyon High School Performing Arts Center**  
1510 IH 35 North, New Braunfels, TX 78130

**Monday, April 1, 2019**

**Jenna Stephenson, Contest Manager**  
Canyon High School Theatre Director

Email: Jenna.Stephenson@comalisd.org      Cell: (512) 294-9597      Office: (830) 643-8101

**Adjudicators:**  
**Perry Crafton, Jack Cody and Rebecca Osborne**

UIL Contact for OAP: Paula Rodriguez, prodriguez@uiltexas.org; (512) 471-4517 Fax: (512) 471-7388

**Scripts:** Please express mail your scripts to all three adjudicators as soon as possible! Please DO NOT require a signature in order for the adjudicators to receive the packages. Please attach a note inside and/or mark on the outside of the envelope “4A Area Contest April 1, 2019 at Canyon High School – New Braunfels, TX”.

**Mailing Addresses:**

Perry Crafton: 5800 Brodie Ln., Apt. 1035, Austin, TX, 78745

Jack Cody: 817 Elm Street, Graham, TX, 76450

Rebecca Osborne: 12802 Modena Trail, Austin, TX, 78729

**The U.I.L. Region IV Area 1 – 4A Area One-Act Play Contest**  
**Entry fee is: \$595.00**

**Please make checks payable to Canyon High School – Comal I.S.D.**

**PLEASE BRING YOUR CHECK TO YOUR OFFICIAL REHEARSAL!**

**Rehearsal Schedule:** All schools will rehearse on Monday, April 1, 2019. The first official rehearsal will begin promptly at 7:00 am, with a 10-minute break between each official rehearsal.

Rehearsals will be conducted in performance order. Other conflicts can be considered to set the rehearsal schedule. The contest manager will email an official schedule once the advancing schools from Bi-District have been determined.

**Please arrive at the Performing Arts Center at least 30 minutes prior to your official rehearsal.**

**Monday, April 1, 2019**  
-----

**Directors/Adjudicators Meeting:** 2:00 p.m. **Location:** CHS PAC Blackbox

**Contest Start Time:** 3:00 p.m. *Shows will run back to back.*

**Please bring the following with you to your rehearsal:**

- State approval for any set additions
- State approval for a play not on the approved list, if applicable
- Evidence of royalty payment
- Publisher's approval for play cuts
- Sound log and script marked with sound cues
- Standards Compliance Form

**Rehearsal/Performance Order:** Order was selected on Tuesday, February 12, 2019. The plays "A", "B", "C" are determined alphabetically by play titles of the advancing plays. See UIL handbook for details. The first play will set up at 2:53 p.m. There will be no intermission between performances other than time allotted for set-ups and strikes. All shows will run back-to-back.

<b>Rehearsal</b>	<b>Monday, April 3<sup>rd</sup>, 2017</b>	<b>Performance</b>
7:00 am	District 27/28 "C"	3:00 pm
8:10 am	District 25/26 "B"	2 <sup>nd</sup> Show
9:20 am	District 27/28 "A"	3 <sup>rd</sup> Show
10:30 am	District 25/26 "A"	4 <sup>th</sup> Show
11:40 am	District 25/26 "C"	5 <sup>th</sup> Show
12:50 am	District 27/28 "B"	6 <sup>th</sup> Show

**About the Facility:**

- The stage is a 52' wide proscenium theatre with approximately 24' of depth from the main curtain to the back curtain.
- There is an apron that is approximately 11' from the curtain line to the front edge of the stage.
- There are three leg curtains, one black mid-traveler curtain, one black back curtain and one cyclorama.
- All leg curtains can be maneuvered onstage/offstage as necessary.
- All curtain pulls are operated from Stage Right.
- Stage Right has 4' of wing space; Stage Left has 6' of wing space available with masking curtains to hide performers from the audience.
- The crossover behind the back curtain to the back wall measures 8' and acts as the storage space for the UIL OAP Unit Set.
- Communication headsets operate from both sides of the stage and in the control booth.

- A total of 12 Edison-style electrical outlets are available throughout the stage.

### **Lighting System Specs:**

The lighting system operates on an ETC ION computer control board. Recording cues is recommended although manual operation is permissible. Recording cues must happen within the official rehearsal period. The host site crew is available to assist with recording although the host site crew is not responsible for cues that do not get entered due to the lack of time, overall preparation, etc.

The lighting areas are focused in 15 areas, 5 across the apron, 5 across the mid-stage, and 5 along the back. A blue, red and amber cyclorama wash will also be available.

Lighting is controlled from the back-of-house control booth. A host crew student will be available in the booth.

### **Sound System Specs:**

The sound system is a Yamaha LS 9 – 32 professional mixing console. A CD player OR auxiliary cord will be available for any device for your sound/music purposes.

Sound is controlled from the back-of-house control booth. A host crew student will be available in the booth.

### **Dressing Rooms:**

Each competing school will be assigned a classroom space that will serve as its dressing room for the contest. Supplies such as extension cords, mirrors, costume racks, etc. **WILL NOT** be provided; each school is responsible for providing their own preparation needs. Each school may move into its classroom after it has participated in its official rehearsal. Please keep and leave your school's dressing room clean and neat at all times. Food and drink **ARE PERMITTED** in your school's dressing room provided each school clean up after themselves.

### **Unit Set Elements**

- The basic UIL One-Act Play Unit Set will be available at the site (there are **NO** doors or windows available) and will be stored along the back wall of the stage, behind the cyclorama. Schools may bring all the scenic/property elements that are needed, and approved, but not provided by the contest site.

### **Awards and Critiques**

Plaques will be presented to the three advancing plays, the alternate play and the outstanding technical crew. Individual medals will be given to best actor and actress, all-star cast, honorable mention, and all-star tech crew.

The critique is a very important part of the OAP process. Please be courteous, attentive, and receptive towards the judges and other casts. The critiques will be given according to geography with the farthest school being first. The three advancing shows will be critiqued last.

### **Know Before You Go**

- Tickets: \$7.00 General Admission tickets may be purchased at the Box Office the day of the contest.
- Comp tickets will be provided for cast and crewmembers, directors, alternates and bus drivers.
- Concessions will be available throughout the day.

- Late seating will be considered upon approval of the directors.
- No photography or video recording is allowed by UIL or International Copyright Law.
- We will award company medals to Advancing Plays.
- At CISD, we are very serious about professionalism, good-sportsmanship and adherence to the UIL OAP Contest Ethics Code, which can be downloaded from page 4 of the 23<sup>rd</sup> Edition of the UIL One-Act Play Handbook.
- OAP Companies will be expected to load-out IMMEDIATELY following their performance.

**Directions to the Canyon High School Performing Arts Center:**

**Traveling from North**

Take I-35 South toward San Antonio. Take exit 189 toward TX-46/TX-337/Seguin/Boerne. At the first intersection, loop under I-35 to head NORTH on 35 Frontage Road. Canyon High School is .5 miles ahead on the RIGHT.

**Traveling from South**

Take I-35 North toward Austin. Take exit 190 toward Interstate 35 Business S. Canyon High School is .5 miles ahead on the RIGHT.

**Accommodations in the Area:**

**Hilton Garden Inn**

1501 Interstate 35 North  
New Braunfels, TX 78130  
(830) 620-4200

**Best Western Inn & Suites**

1493 N I-H 35  
New Braunfels, TX 78130  
(830) 625-7337

**Comfort Suites**

1489 Ih-35 N  
New Braunfels, TX 78130  
(830) 643-11001

**Restaurants in the Area:**

Chili's

Panera

BJ's Restaurant & Brewhouse

McDonald's

IHOP

Pizza Hut

Denny's

Applebee's

Whataburger

Taco Cabana

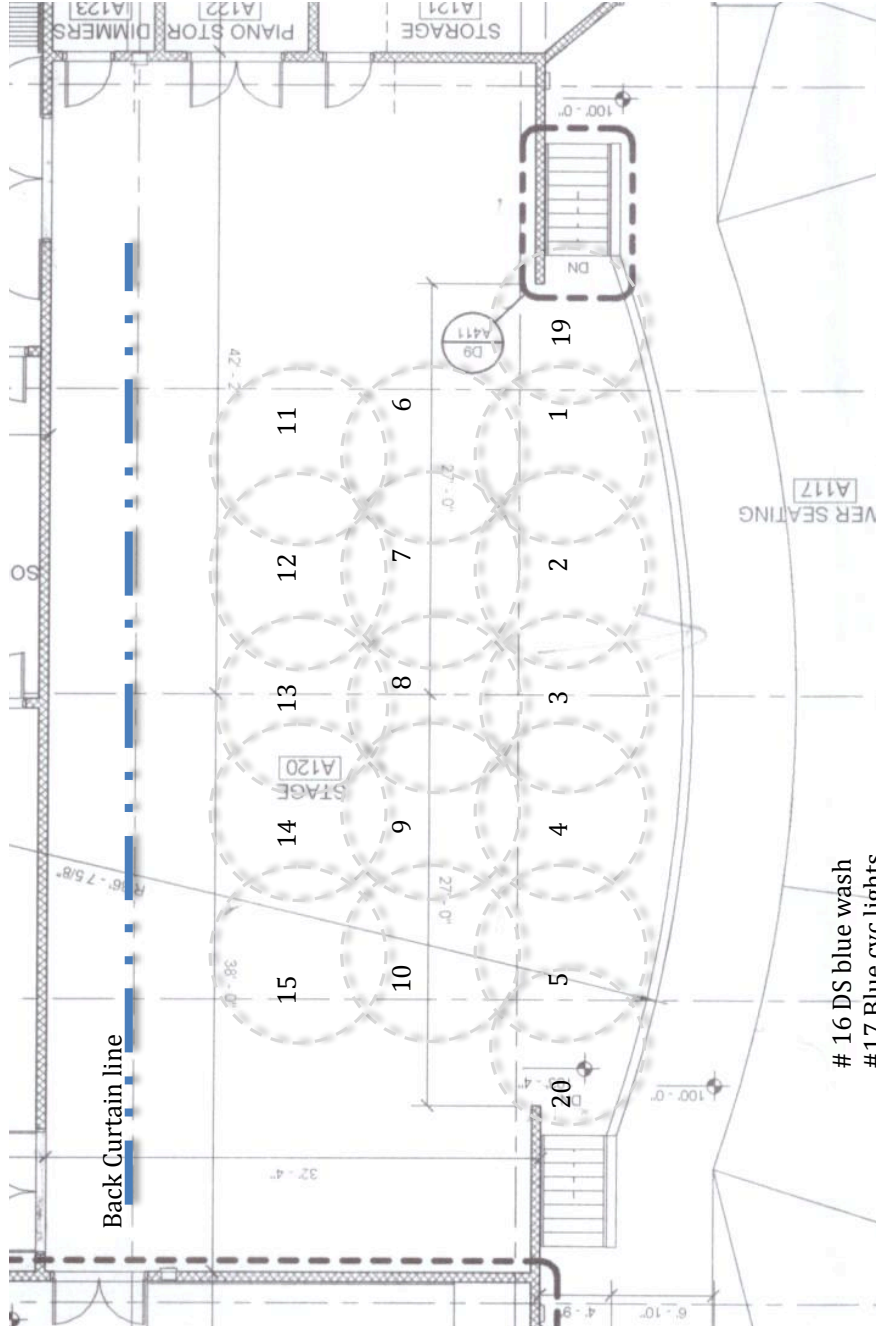
Subway

Bill Miller's BBQ

Olive Garden

Chipotle

Canyon High School Lights  
 Each area is labeled with it's submaster dimmer number.



- # 16 DS blue wash
- # 17 Blue cyc lights
- # 18 Red cyc lights
- # 21 Curtain Warmers (whole apron)

Proscenium opening is 52'. Depth from curtain line is 22.5'. Apron ranges from 7'-10'.  
 Mid-drape is 13' from front drape.