

Division II
UIL Theatrical Design Winners

2016

MACBETH

Division II Individual Costume Design



Division II
Individual Costuming
William B. Travis High
School
Maddi Mays

ddi Mays

MACBETH



MADDI
MAYS

HECATE



MADON
MAYS

LADY MACBETH



MADDI
MAYS





Division II
Individual Costuming
Fossil Ridge High School
Roxy Urquiza

WITCH



LADY MACBETH



MACBETH



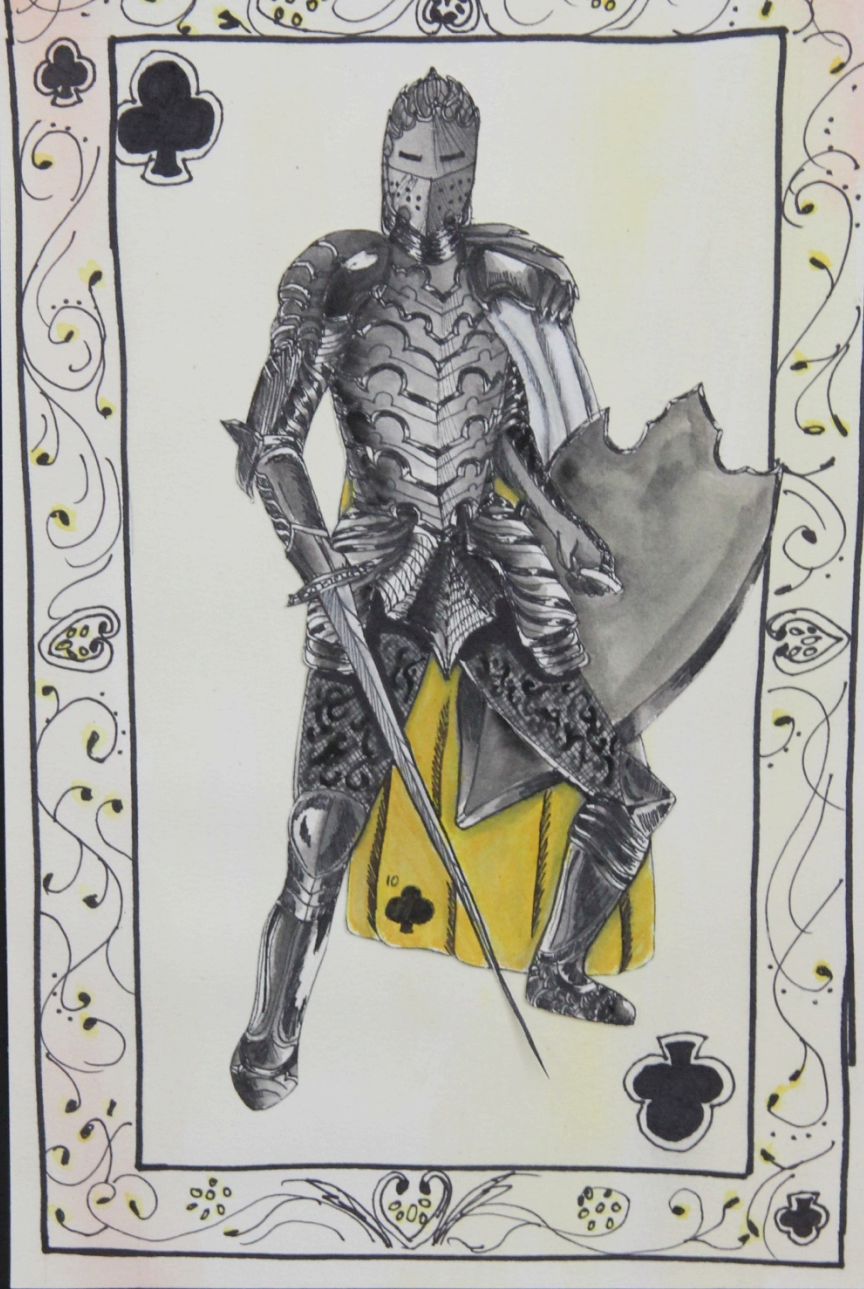
INSPIRATION





Division II
Individual Costuming
Summit High School
Jada Gray









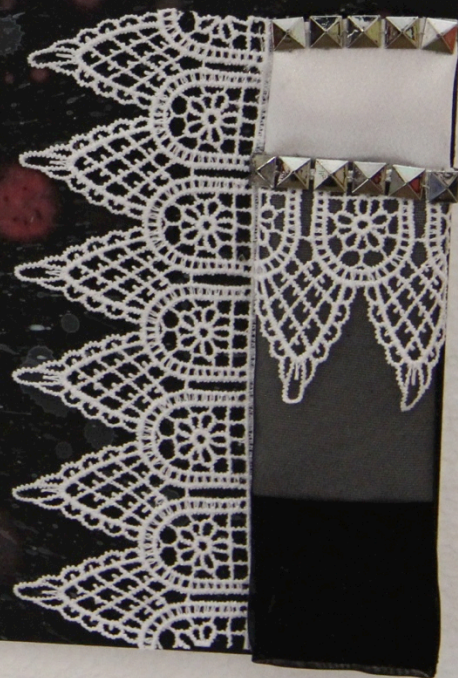




Division II
Individual Costuming
Carroll High School
Ciara Smith

MacBeth

Lady MacBeth



MacBeth

MacBeth



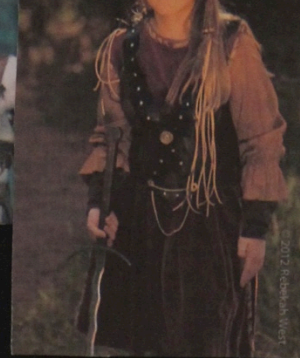


Macbeth
Hecate



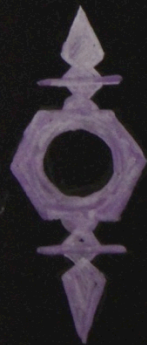
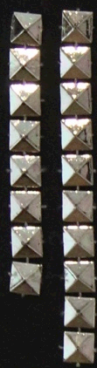


Hecate



Macbeth

Lady Macbeth



This shape was inspired by Lehanneur's work, and serves as an aesthetic representation of his creative thought process.



Andrea Lehanneur's alternative air filtering system. Representation of his creative thought process.





Division II
Individual Costuming
Judson High School
Mercedes Morales



HECATE



LADY MACBETH:
NIGHTGOWN COSTUME



LADY MACBETH:
COSTUME 1



Division II
Individual Costuming
PSJA North High School
Noah Navarro

LADY MACBETH





HECATE

KING DUNCAN







Division II
Individual Costuming
PSJA North High School
Valerie Cantu

LADY MACBETH





KING DUNCAN



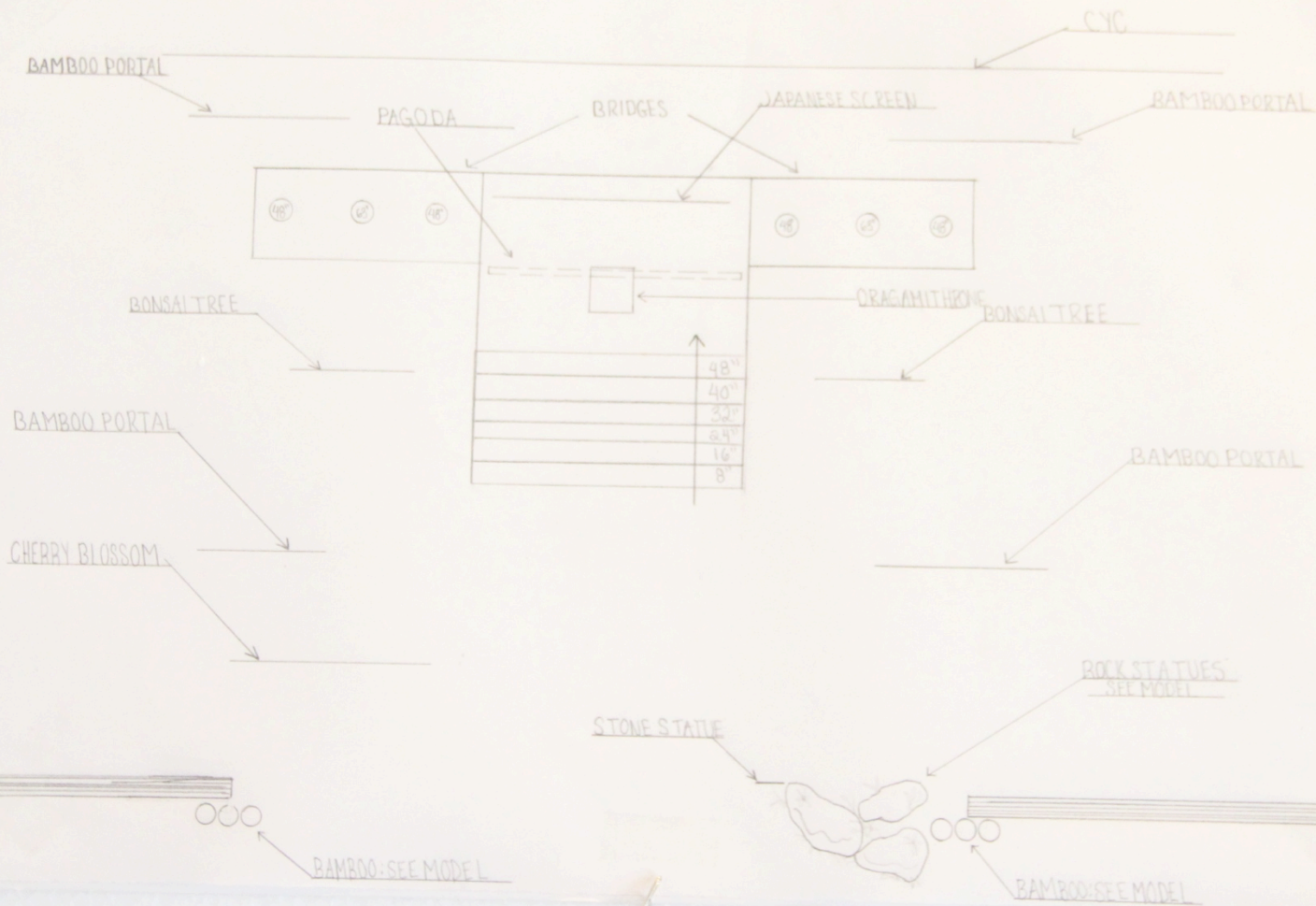
BYZANTINE EMPIRE - 6TH CENTURY



Division II Individual Set Design



Division II
Individual Set Design
Frisco High School
Lauren Davidsen



SHOW: MACBETH

VENUE: LEAGUE HIGH SCHOOL

DESIGNER: JAVIER DAVILA

DATE: FEBRUARY 3, 2016

VIEW: FLOOR PLAN

SCALE: 1/4" = 1'0"





STAGE RIGHT



STAGE LEFT



Eternal Life
Youth
Fresh

Anger
Danger



Mystery
Evil Threat

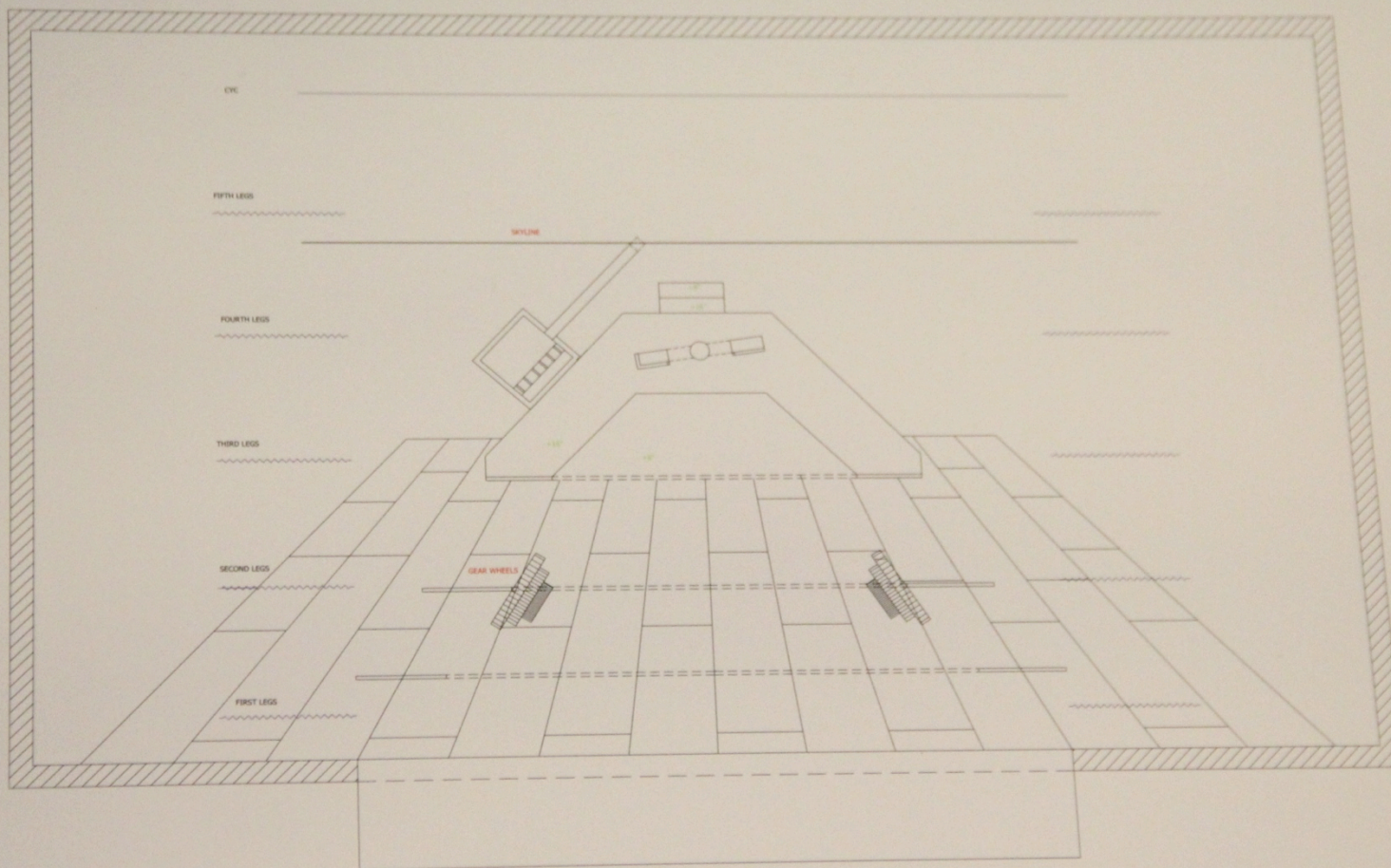


Comfort





Division II
Individual Set Design
HSPVA
Paris Bezanis



PSB

BEZANIS DESIGN STUDIO
40001 STANFORD ST
HOUSTON, TX 77006
713-298-7770
PBEZANIS@YAHOO.COM

MACBETH GROUNDPLAN
LEAGUE HIGH SCHOOL

DATE CREATED: 12/12/2015 DATE LAST REVISED: 2/04/2016

SCALE: 3/8" = 1'-0"

DIRECTOR: PAUL DAVIS

SCENIC DESIGNER: PARIS BEZANIS

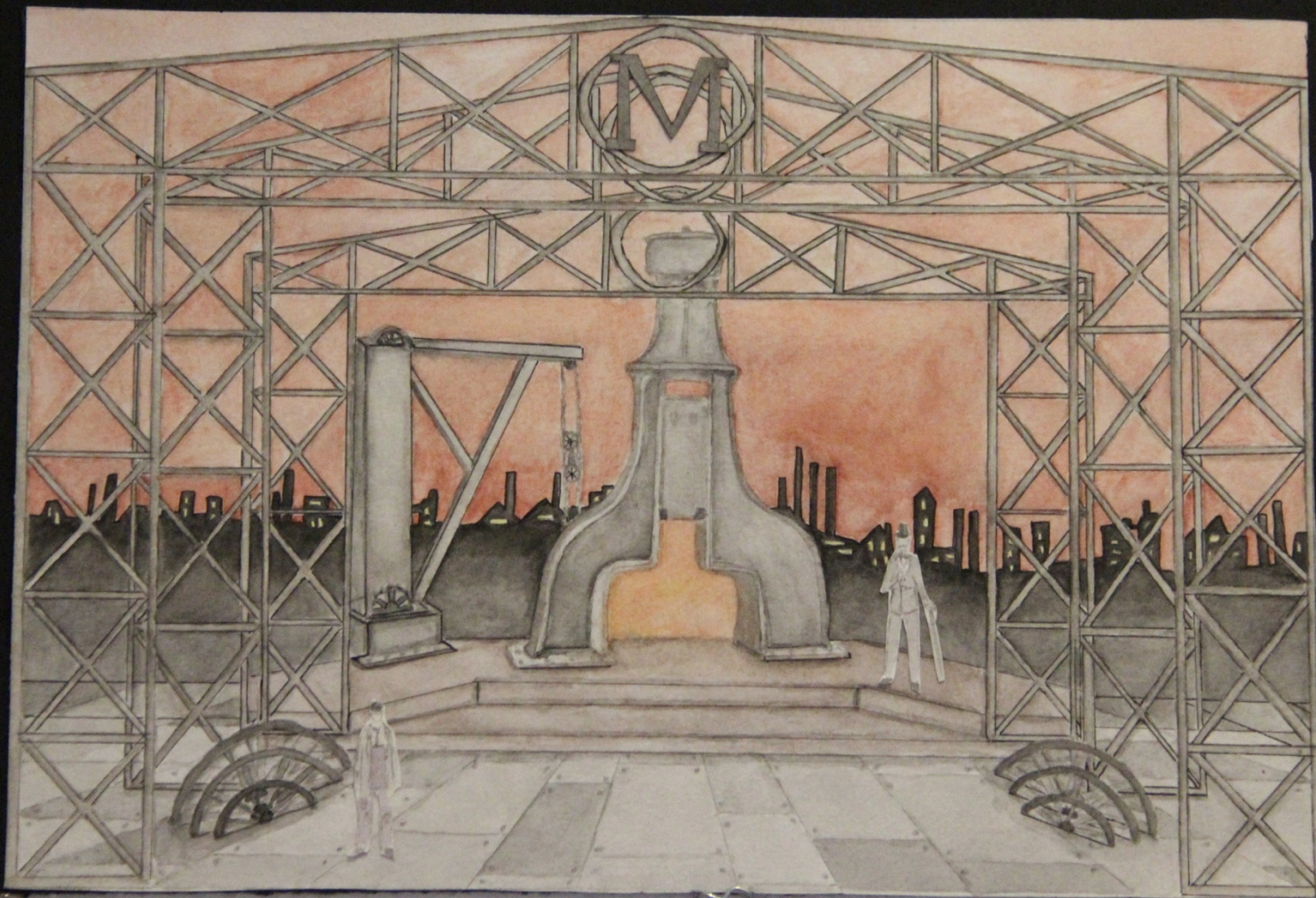
LIGHTING DESIGNER: TRAVIS HORSEMAN

DRAFTED BY: PARIS BEZANIS

PLATE NUMBER:

1

1 OF 1

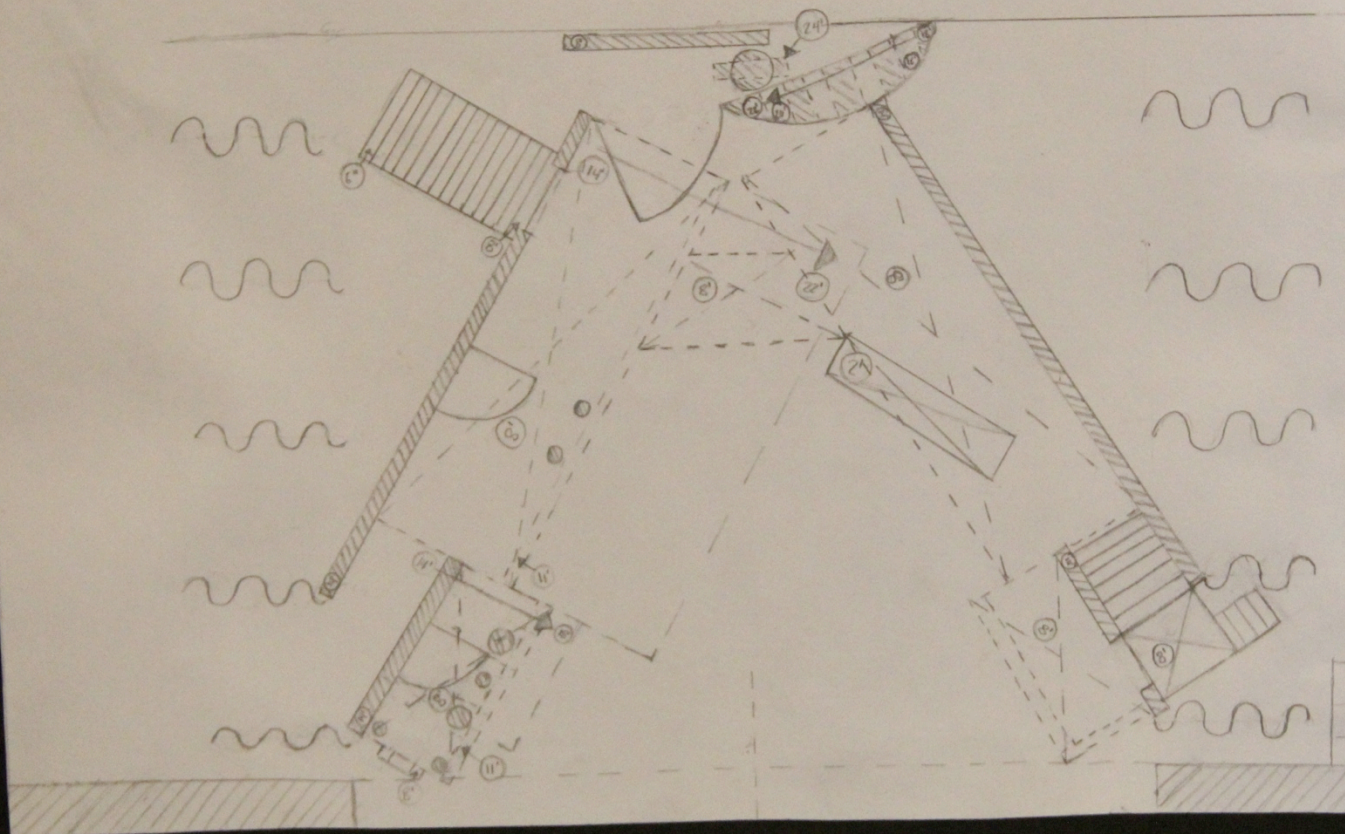






Division II

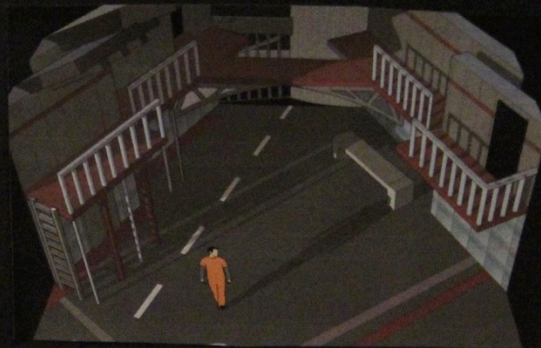
Individual Set Design
Plano West Senior High
Rachael Thompson



Shakespeare's Markethall
 Length 415' 1" 1/4"
 Designed by Richard Thompson



SECURITY CAMERA



BIRD'S EYE VIEW AND FLOOR DETAIL

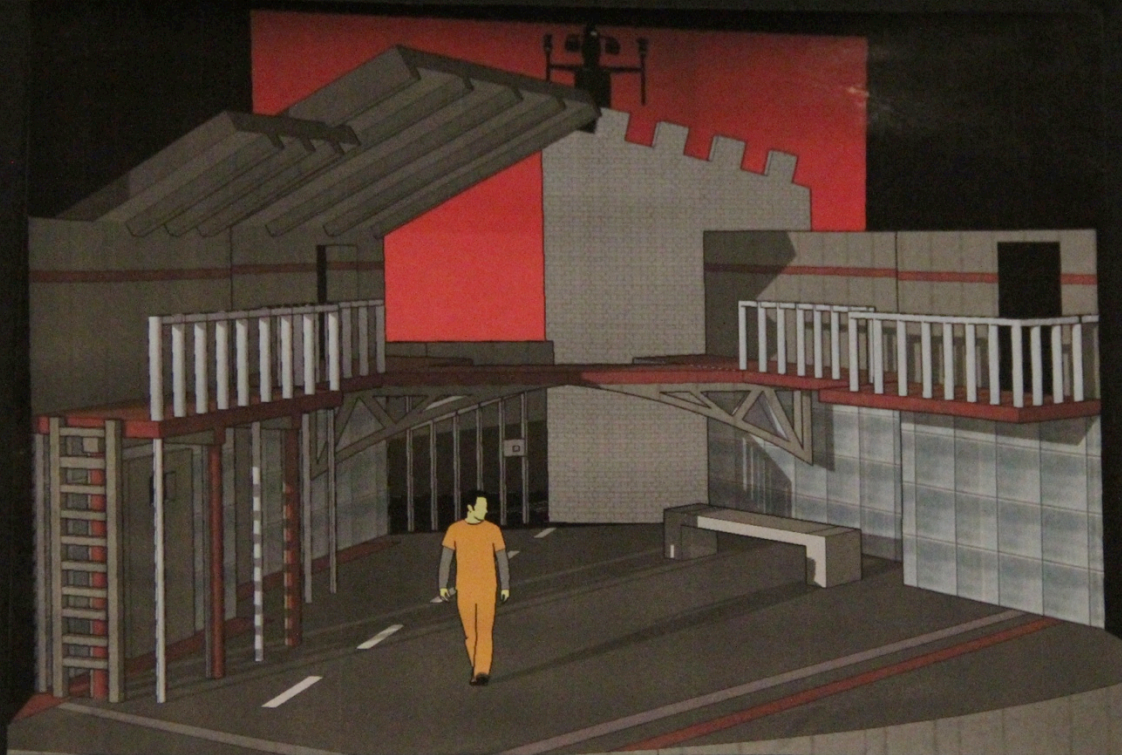


BARS AND CELL DOORS



BRIDGE TRUSS

MACBETH
SET DESIGN PHOTOGRAPHS
RACHAEL THOMPSON
PLANO WEST SENIOR HIGH



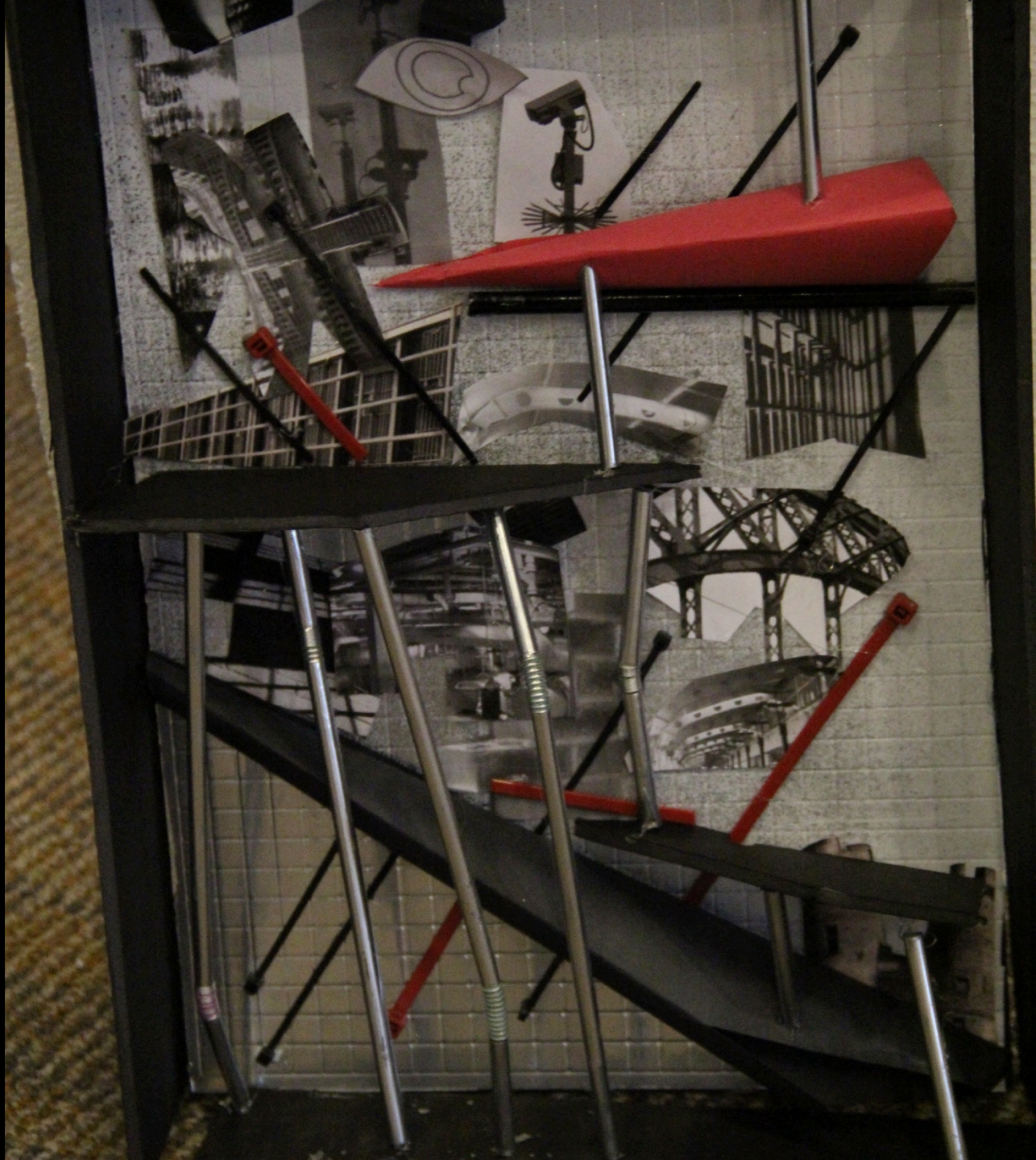
FULL VIEW

MACBETH

SET DESIGN PHOTOGRAPHS

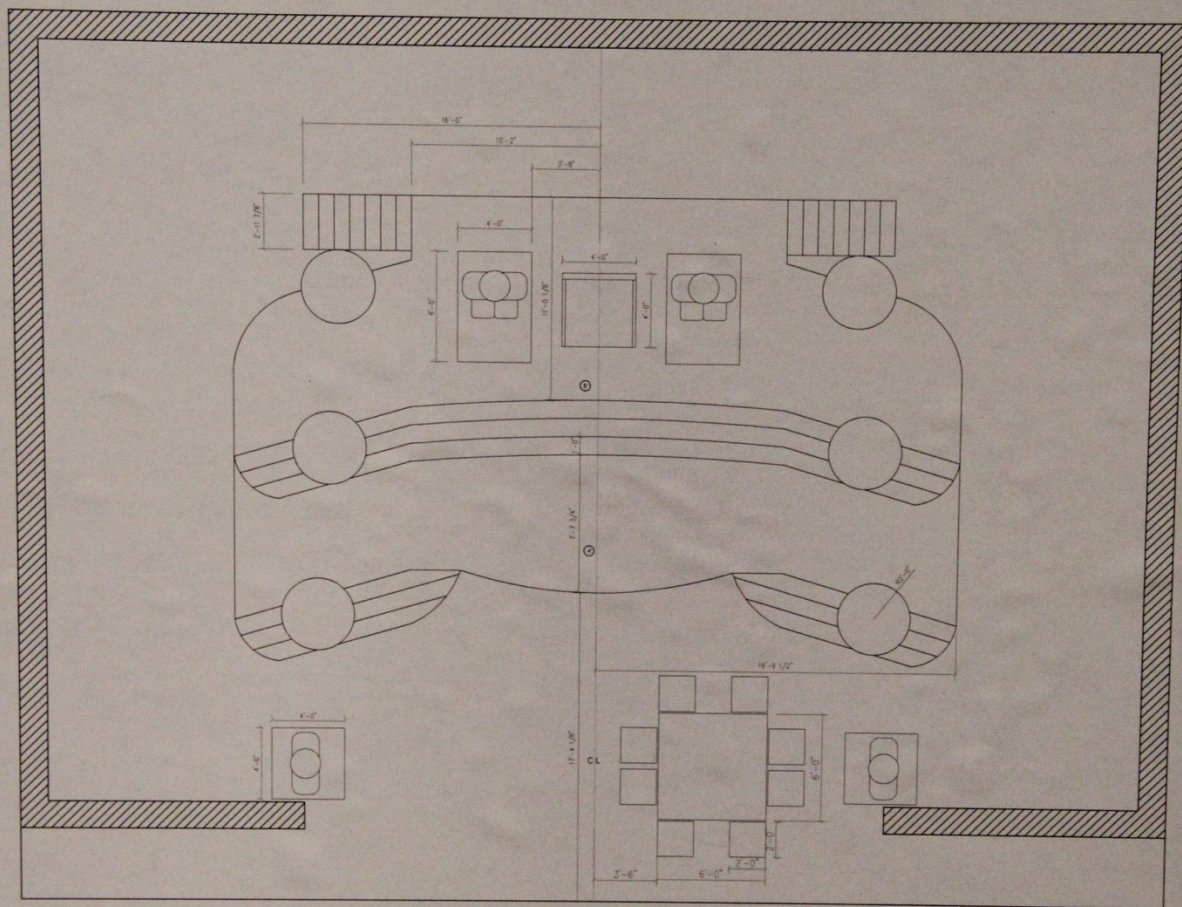
RACHAEL THOMPSON

PLANO WEST SENIOR HIGH





Division II
Individual Set Design
PSJA North High School
Lizette Campos



SCALE 3/16" = 1'-0"

LEAGUE HIGH SCHOOL
THEATRE DEPARTMENT

League High School
200 E. Indiana Loop
League City, Texas 77571

COPYRIGHT 2018

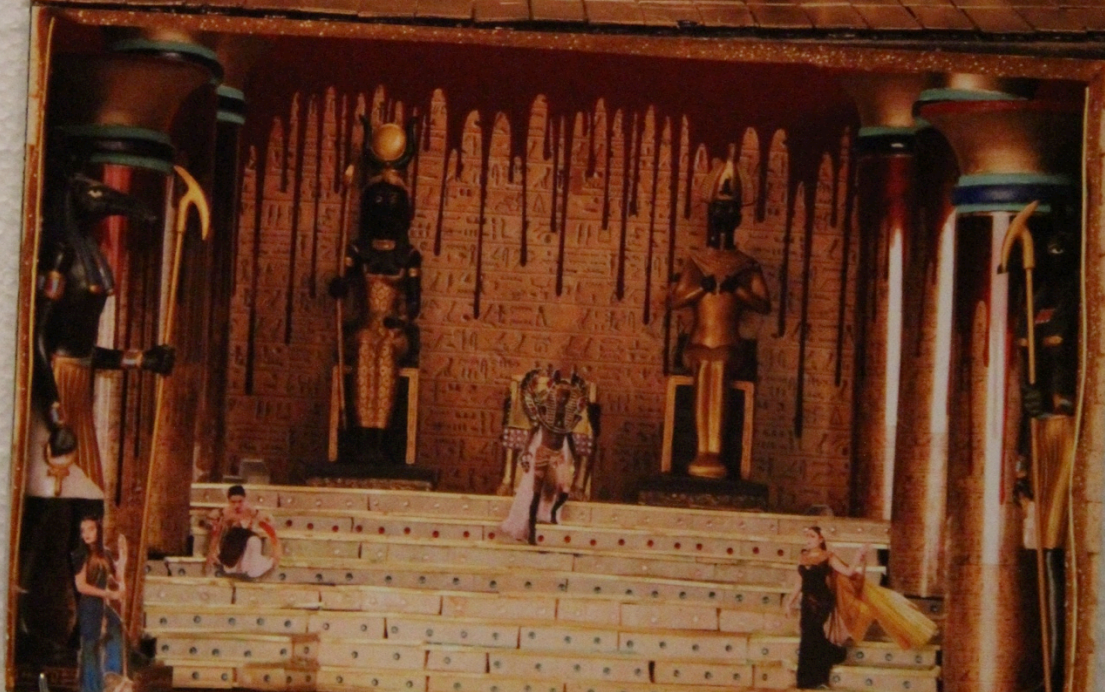
TEXAS

MACBETH

LEAGUE CITY HIGH SCHOOL

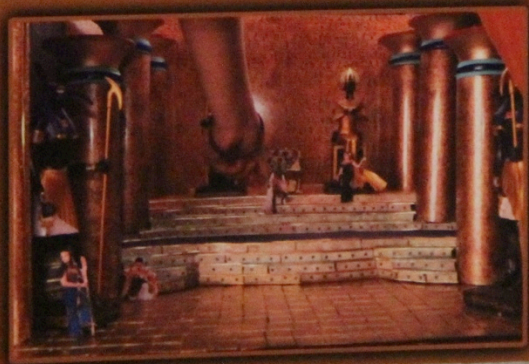
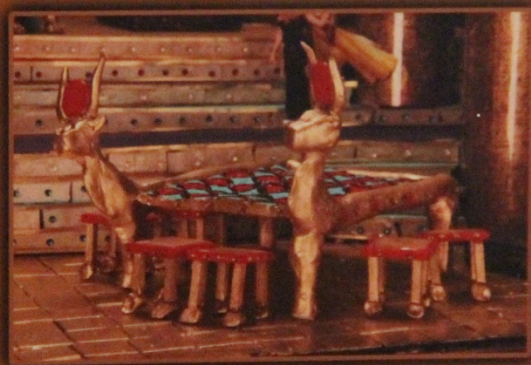
PROJECT NO. 1
DRAWN BY: JESSIE CAMPBELL
DATE: 10/18

ANO.1



ANCIENT EGYPT





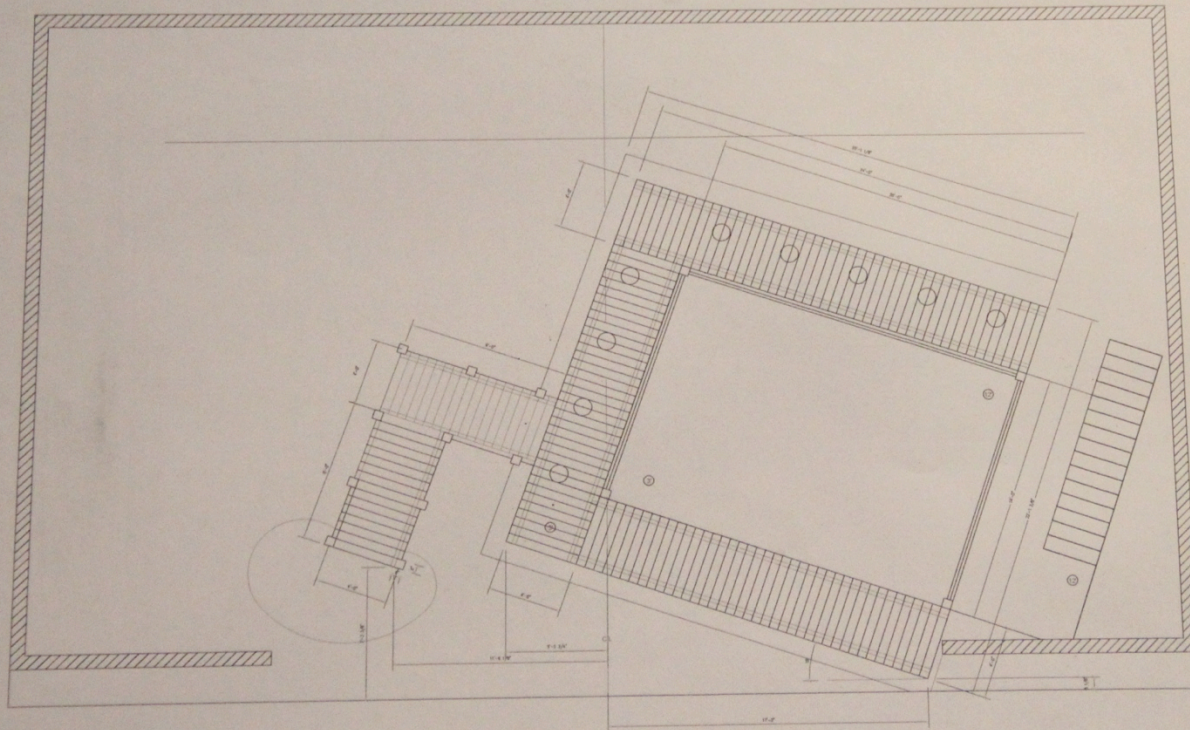


Division II

Individual Set Design

PSJA North High School

Debanhi Galvan



COPYRIGHT 2014

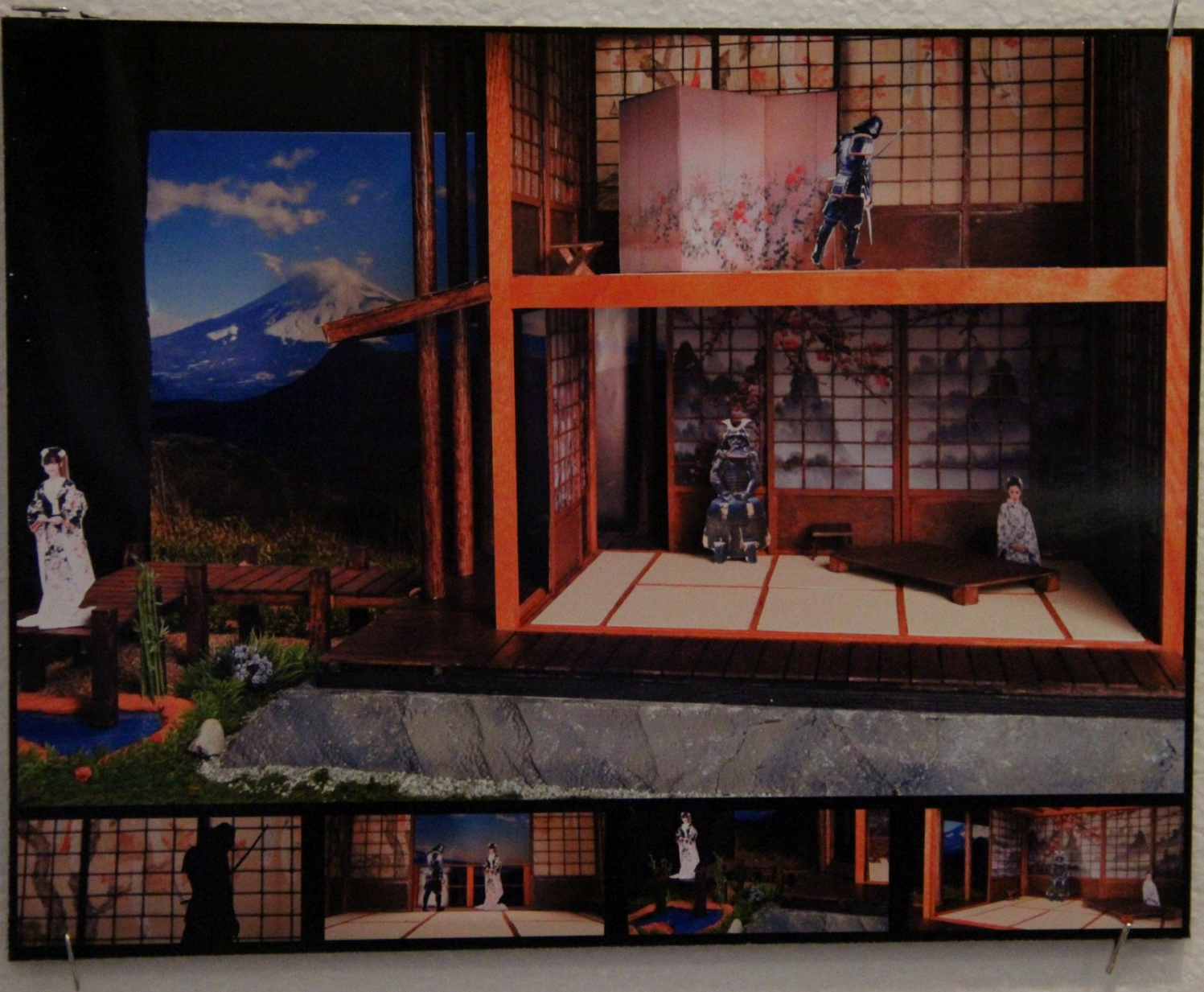
TEXAS

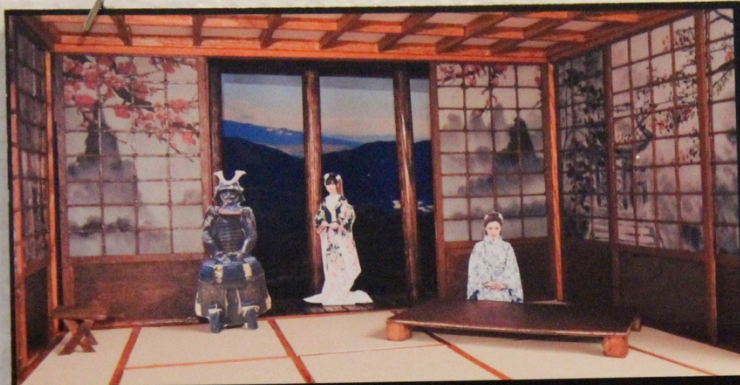
MACBETH

LEAGUE_CITY_HIGH_SCHOOL

PROJECT NO. 1
 DRAWN BY: JEROME, J. W. W.
 DATE: 1/15/14

SCALE 3/16" = 1'-0"





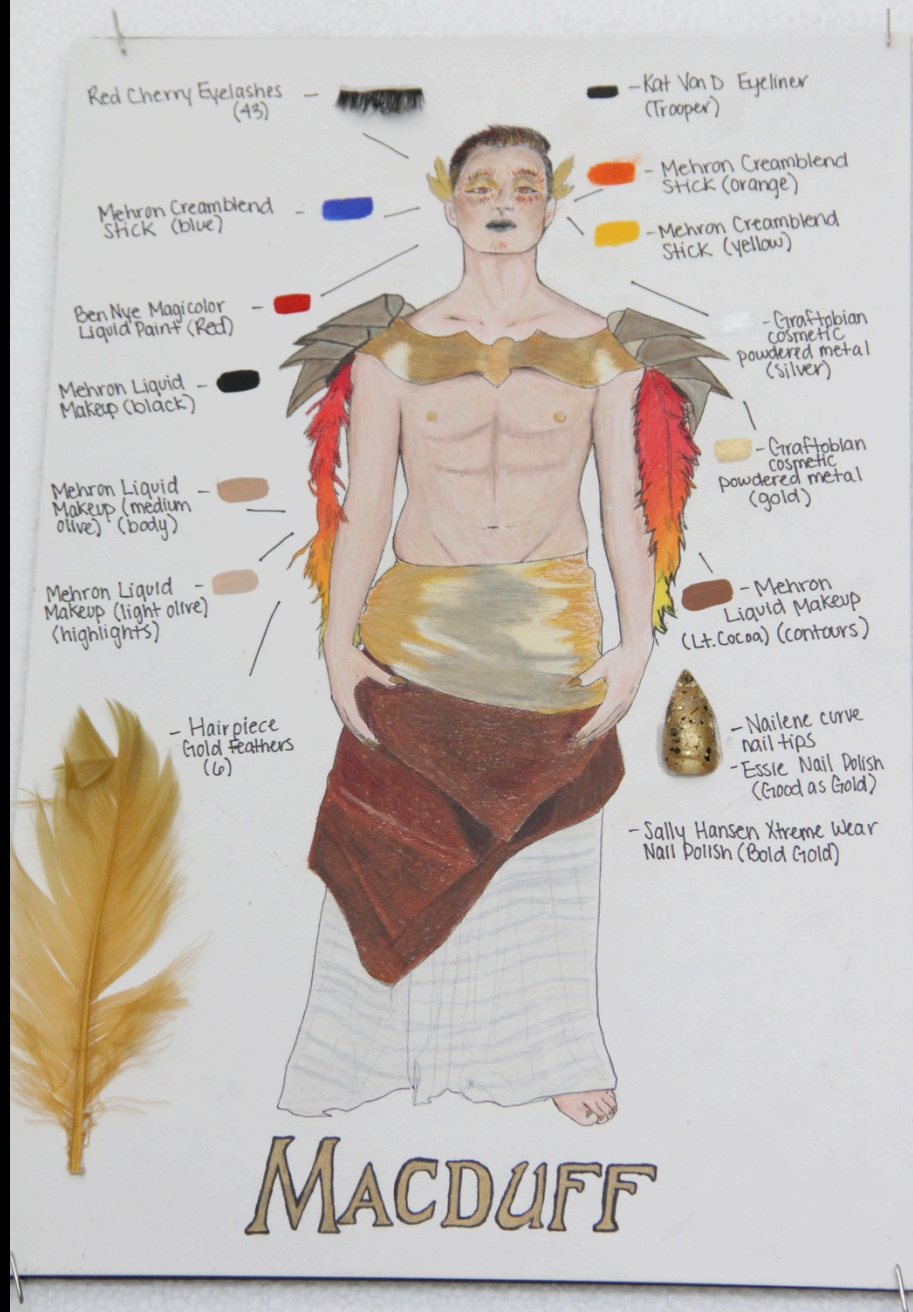


Division II

Individual Hair/Makeup Design



Division II
Individual Hair and Makeup
PSJA North High School
Dennyse Salinas



Red Cherry Eyelashes
(43)

- Kat Von D Eyeliner
(Trooper)

Mehron Creamblend
Stick (blue)

- Mehron Creamblend
Stick (orange)

- Mehron Creamblend
Stick (yellow)

Ben Nye Magicolor
Liquid Paint (Red)

Mehron Liquid
Makeup (black)

- Graftblan
cosmetic
powdered metal
(silver)

Mehron Liquid
Makeup (medium
olive) (body)

- Graftblan
cosmetic
powdered metal
(gold)

Mehron Liquid
Makeup (light olive)
(highlights)

- Mehron
Liquid Makeup
(Lt. Cocoa) (contours)

- Hairpiece
Gold Feathers
(6)



- Nailene curve
nail tips
- Essie Nail Polish
(Good as Gold)

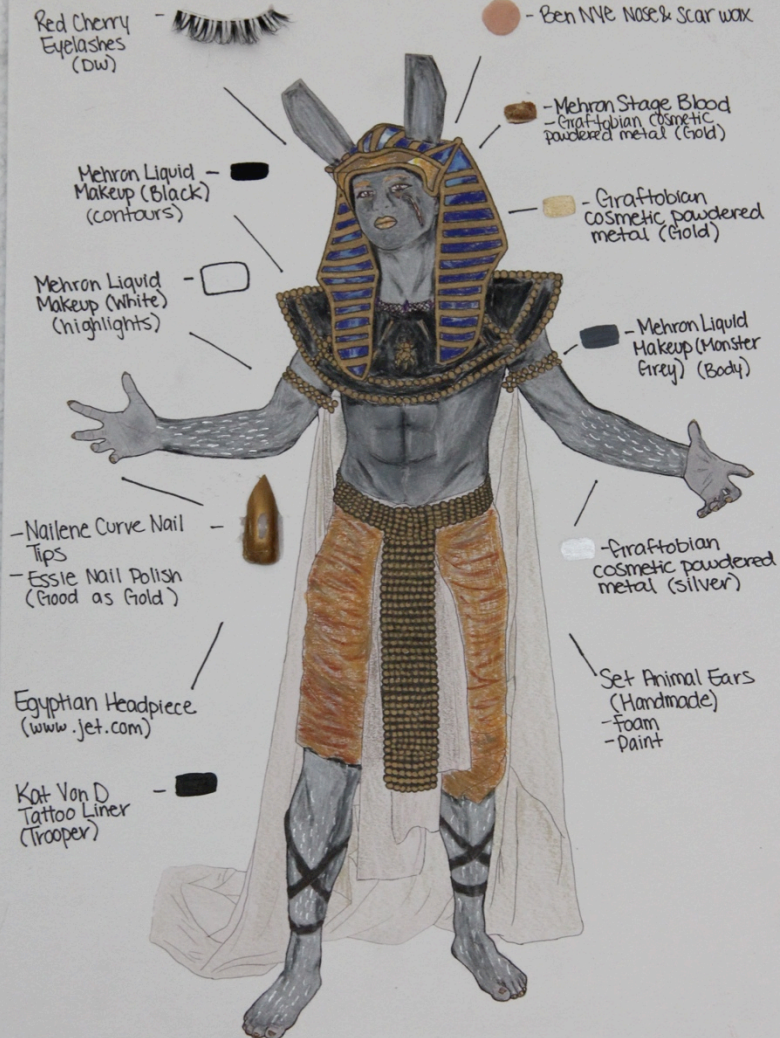
- Sally Hansen Xtreme Wear
Nail Polish (Bold Gold)

MACDUFF

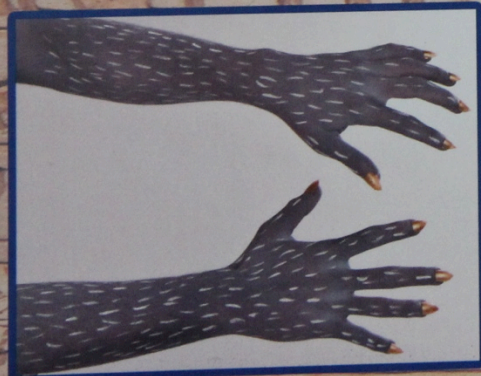


Macduff





MACBETH



Macbeth

Kara Eyelashes
(#199)

Millani Cosmetics Blush
(Bella Rosa)

Kat Von D Everlasting
Liquid Lipstick (exorcism)

Anastasia Beverly Hills
Dipbrow Pomade
(chocolate)

Urban Decay Eyeshadow
(zone)

Urban Decay Eyeshadow
(blackout)

Urban Decay
Eyeshadow
(pop)

Kat Von D Eyeliner
(Trooper)

Mehron Liquid
Makeup
(medium olive)
(body)

Mehron Liquid
Makeup
(sable) (contours)

Graftobian
cosmetic powdered
metal (gold)
(spots) (nose)

Mehron Metallic
Powder (bronze)
(spots)

Lady
Manduff

- Eye Rhinestones

- Urban Decay
Eyeshadow
(Serious)

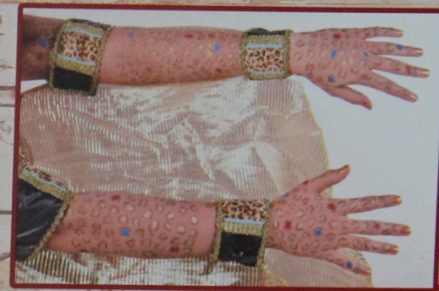
- Urban Decay
Eyeshadow
(steady)

- Urban Decay
Eyeshadow
(baby)

- Mehron Liquid
Makeup (red)
(spots)

- Mehron Liquid
Makeup (blue)
(spots)

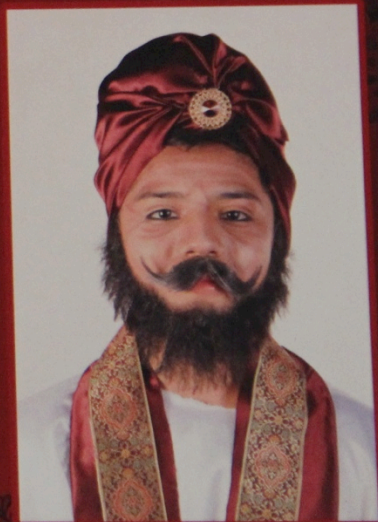
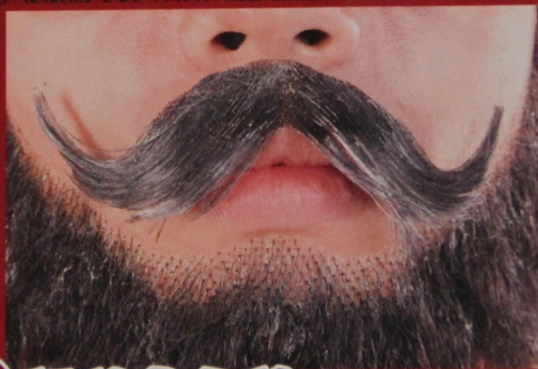








Division II
Individual Hair and Makeup
PSJA North High School
Frida Angeles



King Duncan

King

- clip on
earring

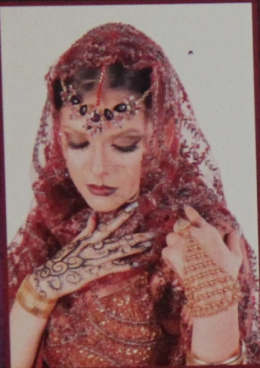
- Red silk



- Ben Nye Media Pro HD
(SK-3 shadow wheel)

- Rubies costume co.
Beard and mustache

- Maroon silk fabric



Lady
Macbeth



Lady
Macbeth



Purple
Beads

Purple
Necklace

- Milani brow fix kit
(medium)

- Too faced
chocolate bar
(cherry cordial)

- Naked smoky
(Black Market.)

- Almay liquid liner
(221 black/noir)

- L'oreal Paris infallible
(black) eyeliner

- Kat Von D contour kit
(subconscious)

- Avon smooth mineral
(blush fard M401
Perfect Plum)

- Kara eyelashes
(#12)

- Kara eyelashes
(Flare #5)

- Nars lipstick
"Charlotte"

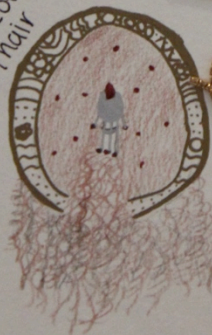
- Gold Bracelet

Gold
Chain

Purple bead

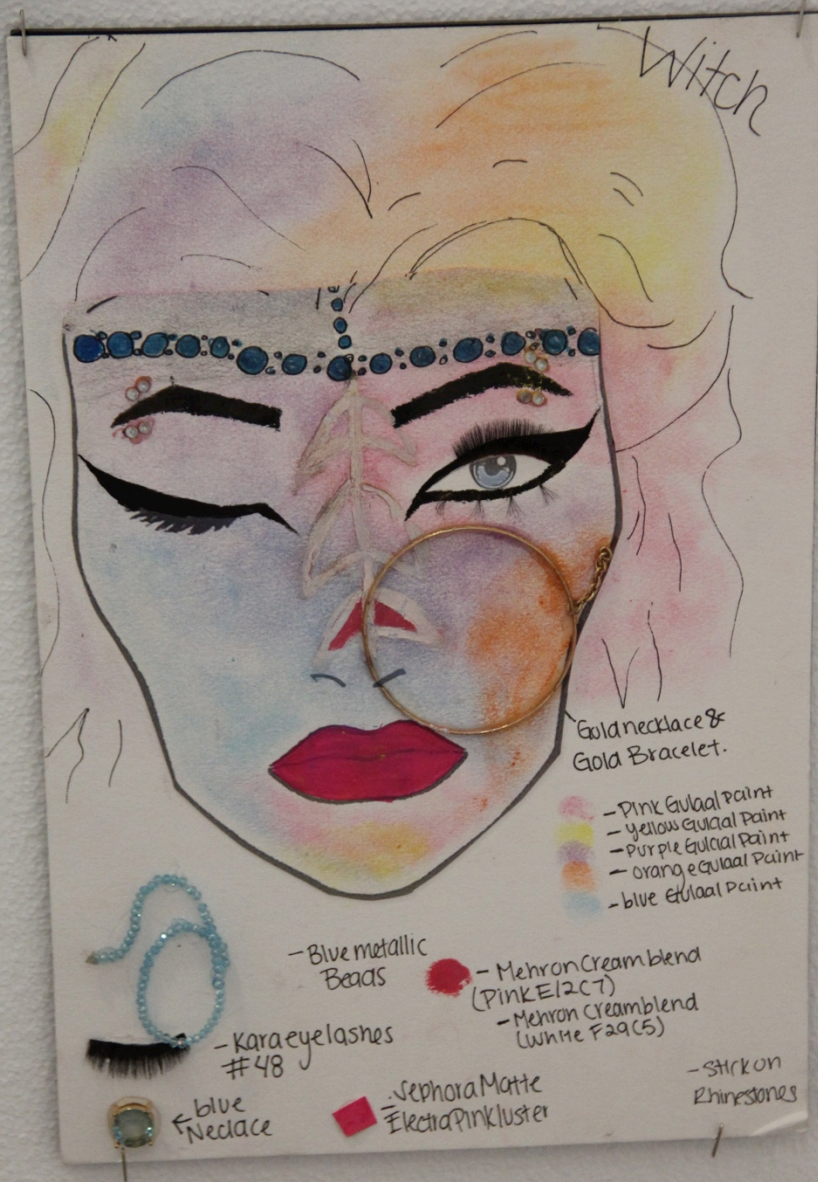
- Scunci Large Bobby Pin

Back of
Hair



Gold
- headband





Witch

Gold necklace &
Gold Bracelet.

- Pink Guilaal Paint
- Yellow Guilaal Paint
- Purple Guilaal Paint
- Orange Guilaal Paint
- Blue Guilaal Paint

- Blue Metallic
Beads

- Mehron Creamblend
(Pink E12 C7)
- Mehron Creamblend
(White F29 C5)

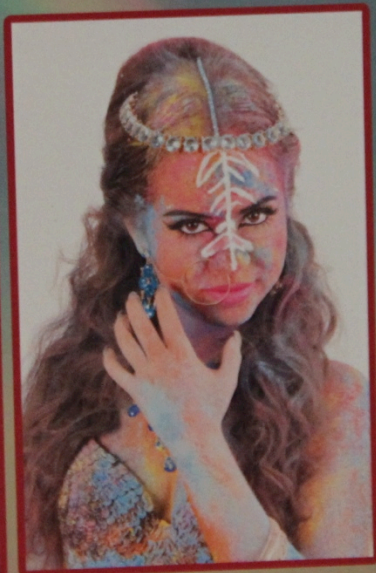
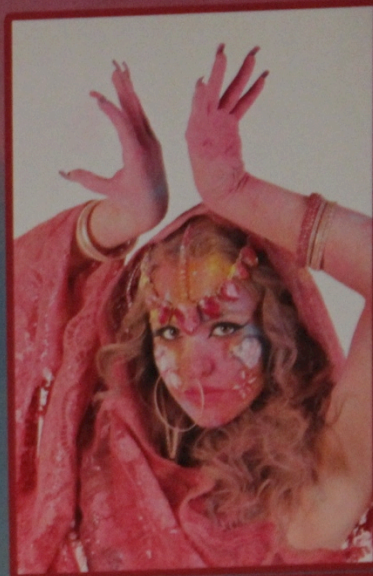
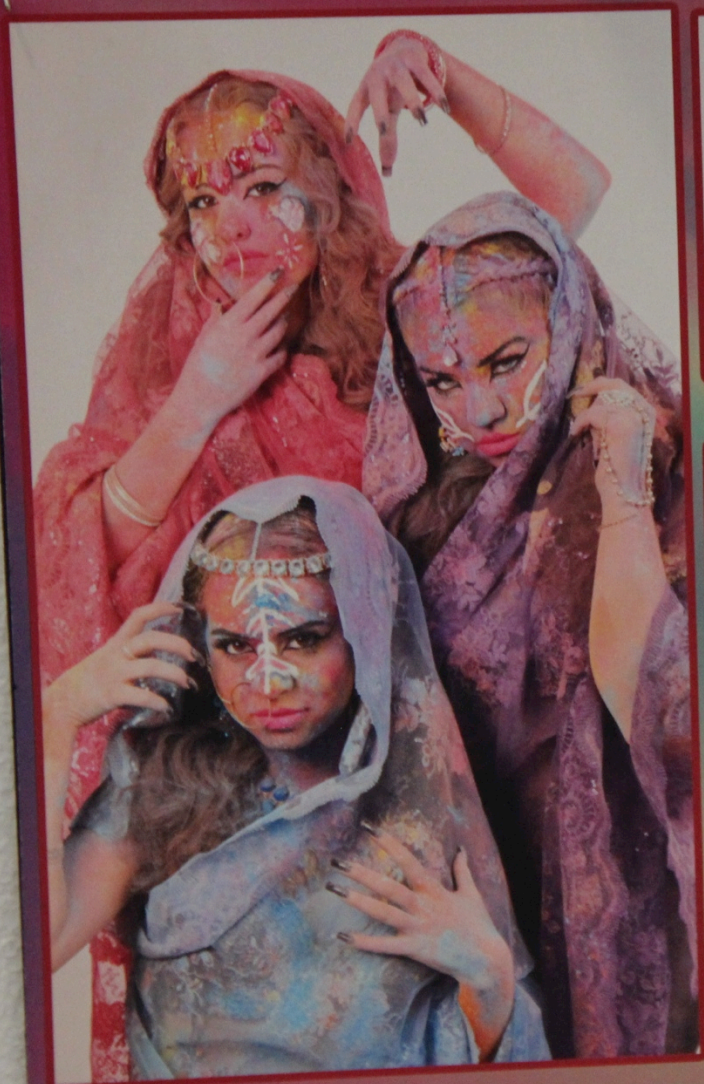
- Kara eyelashes
#48

- Sephora Matte
Electric Pink Luster

- Stick on
Rhinstones



blue
Necklace



The Witches



Division II

Individual Hair and Makeup

Temple High School

Bailee Poelker

Herod
Act 3, Scene 3

Macbeth
William Shakespeare



Herod

- Ben Nye Crème Colors-Black
- Ben Nye Crème Colors-White
- Ben Nye Pressed Eye Shadow-Black
- Aquacolor Inferenze Wet Makeup-Bronze
- Ben Nye Crème Colors-Maroon
- Ben Nye Eyeliner Pencil-Onyx Black

Macbeth
William Shakespeare

Hecate
Act 3, Scene 5



Macbeth
William Shakespeare

Macbeth
Act 3, Scene 4



Macbeth

Celebre HD Crème Foundation- Light 2/ LT2

Ben Nye Crème Foundation- Medium Olive

Ben Nye Crème Foundation- Brown Sugar

Ben Nye Media Pro- Highlight Wheel

Ben Nye Media Pro- Shadow Wheel

Ben Nye Crème Foundation- Brown Sugar
Ben Nye Media Pro- Highlight Wheel
Ben Nye Media Pro- Shadow Wheel

Macbeth
William Shakespeare

Macbeth
Act 3, Scene 4



Macbeth
William Shakespeare

Lady Macbeth
Act 1, Scene 5



Lady Macbeth

-  Celebre HD Crème Foundation-Light 3/LT3
-  Ben Nye Crème Foundation-Medium Olive
-  Ben Nye Crème Foundation-Brown Sugar
-  Ben Nye Media Pro-Highlight Wheel
-  Ben Nye Media Pro-Shadow Wheel
-  Ben Nye Eyeliner Pencil-Onyx Black
-  Ben Nye Lip Color-Bordeaux

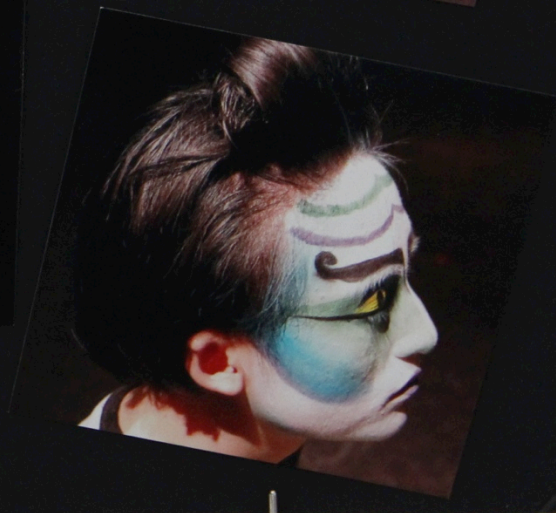
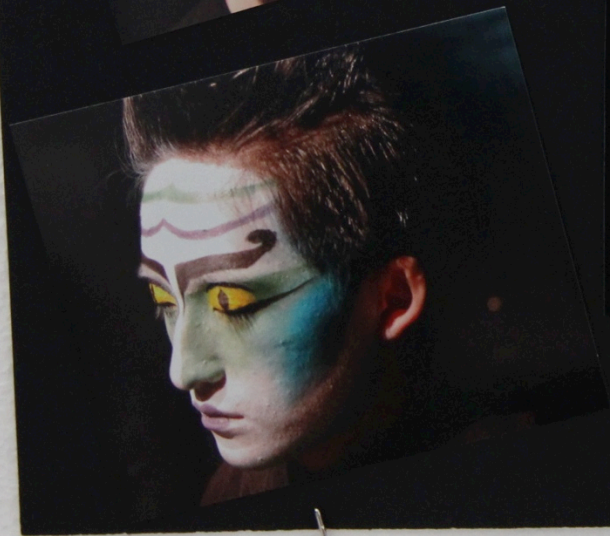




Division II
Individual Hair and Makeup
William B. Travis High
School
Karina Medina

HECATE

by : KARINA MEDINA





HECATE



KARINA
MEDINA



MACBETH

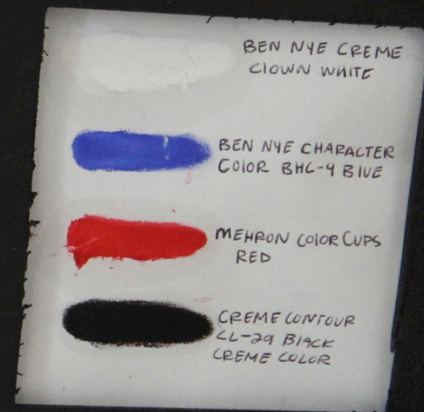


by: KARINA MEDINA





MACBETH



KARINA
MEDINA

BANQUO'S GHOST



by KARINA MEDINA

BANQUO'S GHOST



BEN NYE CRÈME
CLOWN WHITE

CRÈME CONTOUR CL-29
BLACK CRÈME COLOR

BEN NYE CHARACTER
COLOR BHC-4 BLUE

BEN NYE CRÈME
COLOR LL

LUMIÈRE BEN NYE
LUXE POWDER

KARINA MEDINA





Division II
Individual Hair and Makeup
Pflugerville High School
Dana Fickel



Anastasia Shadow Couture: Noir
 Anastasia Shadow Couture: Intense Gaze
 Anastasia Shadow Couture: Pink Champagne
 Anastasia Shadow Couture: Morocco
 L'oreal Liquid Eyeliner: Black
 Makeup Forever Flash Palette: Turquoise
 Makeup Forever Flash Palette: Fuchsia
 Makeup Forever Flash Palette: Yellow
 Wet'n'Wild Boardwalk Boozing: Pink
 Wet'n'Wild Boardwalk Boozing: Orange
 Wet'n'Wild Shimmer the Night: Black
 Wet'n'Wild Shimmer the Night: Purple
 NYX Wonder Pencil: Light
 NYX Liquid Liner: White
 NYX: Hot Yellow
 NYX: Double Dare
 Rimmel ScandalEYES: Black
 Urban Decay: Midnight Cowgirl

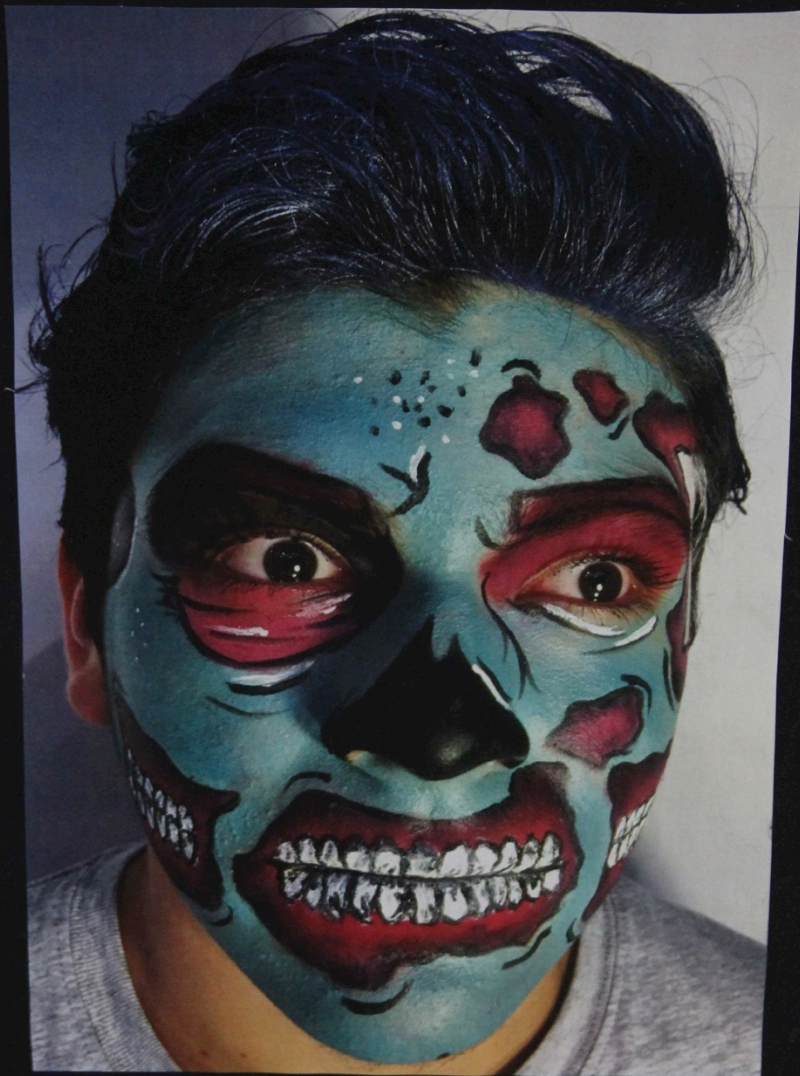


Dana Fickel
Hair and Makeup Design 2016
Warhol Zombies



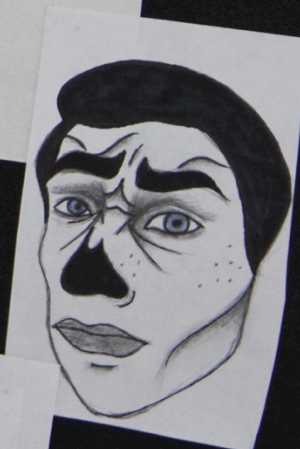


macbeth
 Wet'n'Wild Boardwalk Boozing: Orange
 Wet'n'Wild Boardwalk Boozing: Pink
 Wet'n'Wild Boardwalk Boozing: Blue
 Wet'n'Wild Boardwalk Boozing: Purple
 Wet'n'Wild Shimmer the Night: Purple
 Wet'n'Wild Shimmer the Black: Black
 NYX Liquid Liner: White
 NYX Wonder Pencil: Light
 Makeup Forever Flash Palette: Turquoise
 Makeup Forever Flash Palette: Fuchsia
 Snazaroo Face Paint: Black
 Snazaroo Face Paint: Black



Dana Fickel
Hair and Makeup Design 2016
Warhol Zombies





Wet'n'Wild Eye Pencil: C705
NYX Liquid Liner: White
NYX Wonder Pencil: Light
Urban Decay: Strip
Urban Decay: Polyester Bride
Paula's Choice Nude Mattes: Café Au Lait
Paula's Choice Nude Mattes: Café Au Lait



Dana Fickel
Hair and Makeup Design 2016
Warhol Zombies



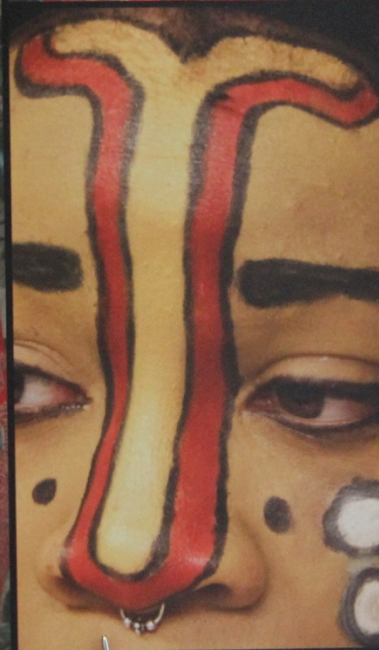




Division II
Individual Hair and Makeup
HSPVA
Joshua Wyatt

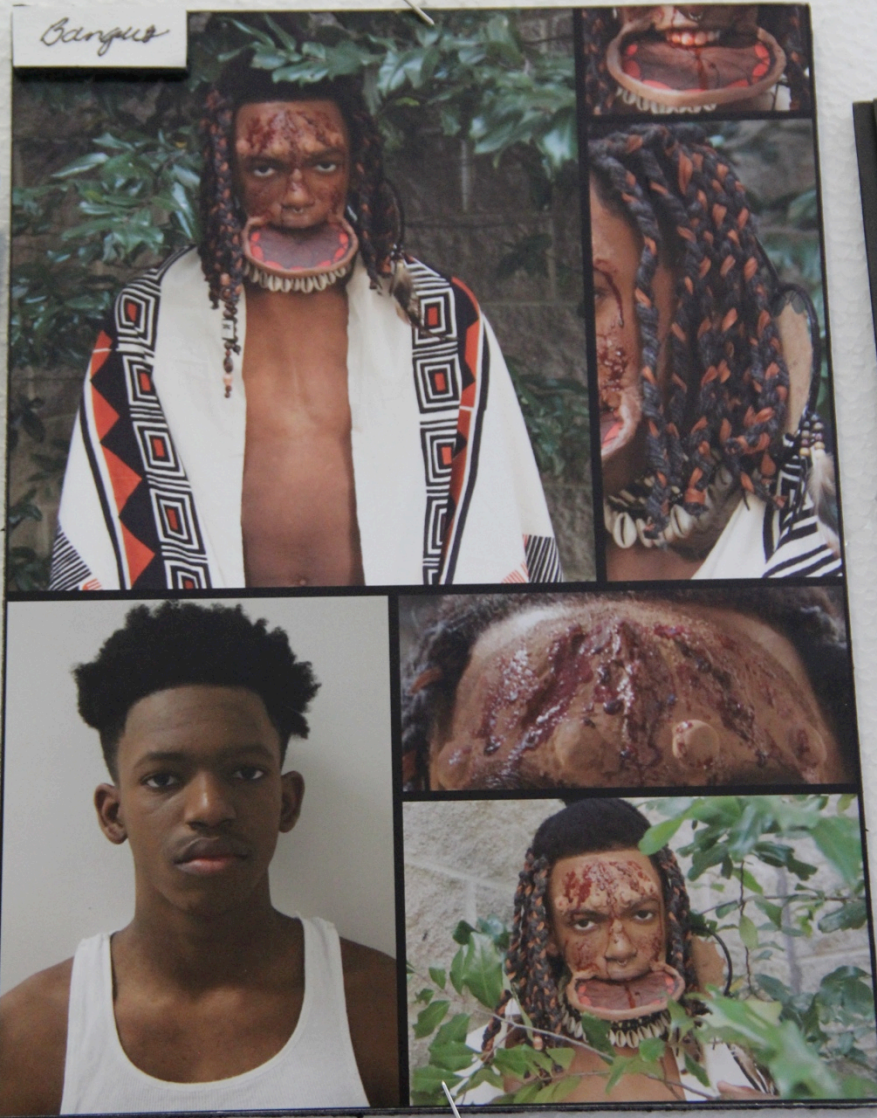


Lady Macbeth





Banguis





• Side view

MACBETH

Sketch 1



PAINT:

BEN NYE:

- ☐ CL-1 WHITE (creme)
- ☒ EYE BROW PENCIL (BLACK)

SNAZAROD:

- ☒ METALLIC COLOURS

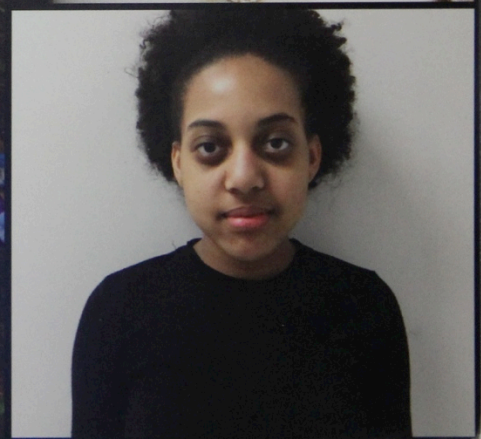
HAIR:

- ☒ COTTON MOP DYED W/ JACQUARD (BLACK)

OTHER:

- CROCUS & FORGET ME - NOT FLOWERS
- PURPLE MATTE LIPSTICK

Witch 1



Individu

J

REBETH



NIGERIA

Division II Individual Marketing Design



Division II
Individual Marketing
PSJA North High School
Joey Barrera

LEAGUE HIGH SCHOOL PRESENTS
MACBETH

WRITTEN BY WILLIAM SHAKESPEARE



MAY 1ST @ 2PM AND 7PM



@LEAGUEHS



956-382-6758

TICKETS \$6

LEAGUE HIGH SCHOOL THEATRE

BUDGET

Marketing
Budget

SPECIALTY ITEM

MACBETH

PLAY BY WILLIAM SHAKESPEARE

MAY 1ST @ 2PM AND 7PM



@LIMBETHS

956-352-6758



THEATRE SE

LIMBETH HIGH SCHOOL THEATRE

MACBETH

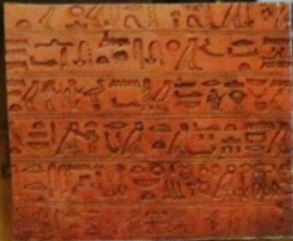
PLAY BY WILLIAM SHAKESPEARE

MAY 1ST @ 2PM AND 7PM

ANCIENT EGYPT



TRAJAN PRO



Papyrus



SELL YOUR SOUL



SLAYER



MACBETH

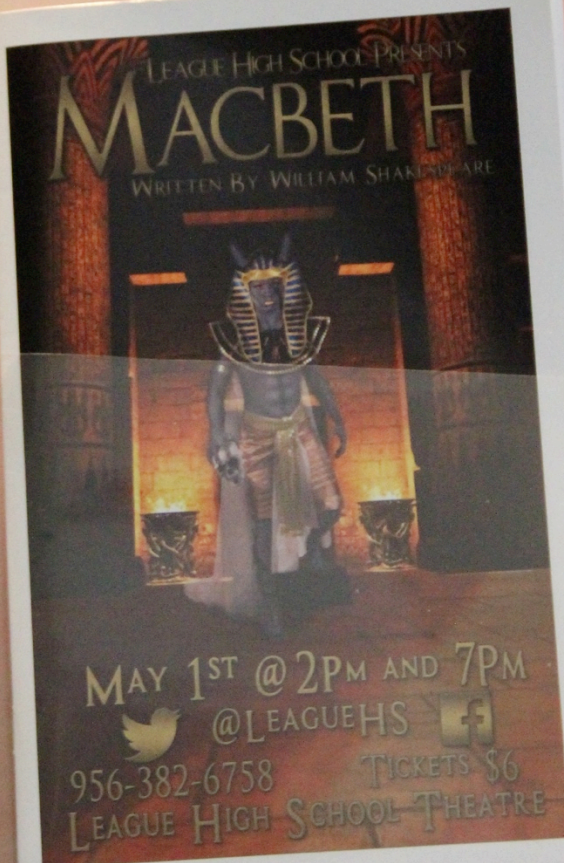
WRITTEN BY WILLIAM SHAKESPEARE

2016 UIL THEATRICAL
DESIGN CONTEST

JUSTIFICATION
PAPER

PROGRAM

LEAGUE HIGH SCHOOL PRESENTS
MACBETH
WRITTEN BY WILLIAM SHAKESPEARE



MAY 1ST @ 2PM AND 7PM
@LEAGUEHS
956-382-6758
LEAGUE HIGH SCHOOL THEATRE

TICKETS \$6



Division II
Individual Marketing
Lewisville High School
Marily Gonzalez



Inspiration Board

LEAGUE HIGH SCHOOL THEATRE
PRESENTS

WILLIAM SHAKESPEARE'S
MACBETH



MAY 1, 2016

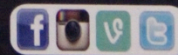
7:00 P.M.

LEAGUE HS THEATRE

TICKETS \$10

STUDENTS \$7

TICKETS AVAILABLE ONLINE
LEAGUETHEATRE.COM



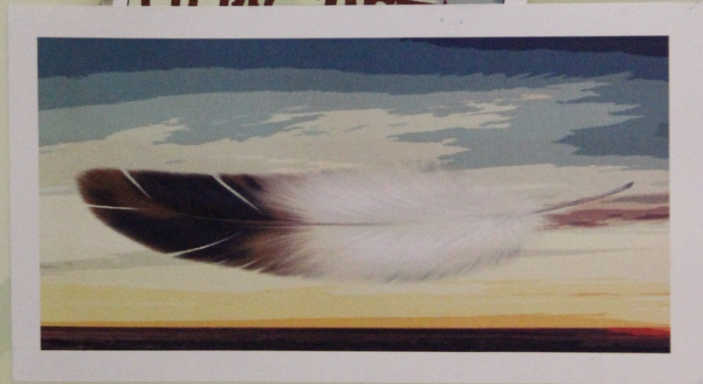
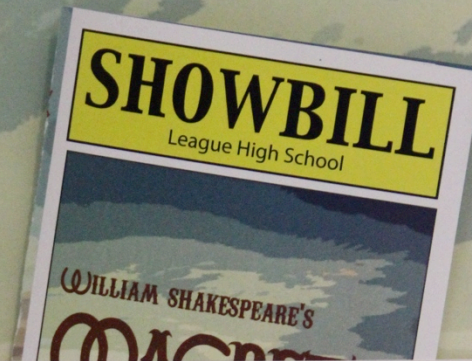
#LHSMACBETH
@LEAGUETHEATRE



PROMOTION DESCRIPTION	COST	NOTES
PROGRAMS	\$500.00	1000 COPIES: IN COLOR/CARDSTOCK
POSTERS	\$350.00	500 QTY: 11 X 17 COLOR ON CARD STOCK
KEY CHAINS	\$500.00	350 QTY FOR WESTERN DAYS & CONCESSIONS/CAST/ CREW/FACULTY/PARENTS
MINI POSTER CARDS WITH \$2 OFF COUPON	\$252.44	1000 QTY FOR MIDDLE SCHOOLS & WESTERNS FEST
WINDOW PAINT	\$35.98	FOR CARS & LHS WINDOWS
VIP PASSES	\$186.68	1000 QTY: PRINTING & LANYARDS
BOOTH RENTAL AT WESTERN DAYS	\$75.00	20 X 20 BOOTH WITH AV CAPABILITIES
SHOW T-SHIRTS	\$550.00	50 QTY: CAST, CREW + 50 TO SELL AT SHOW
CONTEST PRIZES	\$250.00	\$50X2 & \$25X2 GIFT CARDS TO WINNER OF SOCIAL MEDIA CONTEST
CHARACTER BREAKFAST	\$250.00	FOOD & SUPPLIES FOR PANCAKE BREAKFAST
PHOTO OP SIGNS FOR SCHOOL	\$0.00	USE EXISTING SUPPLIES & PAINT
TOTAL MARKETING COSTS	\$2950.01	

Budget

Budget



Program



Division II
Individual Marketing
Marble Falls High School
Holden Fox

LEAGUE

HIGH

SCHOOL

PRESENTS



WILLIAM SHAKESPEARE

M A C B E T H

LOCATION

League High School Theatre
600 League Ave.
League, Tx

RESERVATIONS

SHOW & TICKETS
brownpaperickets.com

SHOWTIME

May 1, 2016
7:00 pm

Call (555) 712-3539 for ticketing information



MACBETH - PROGRAM



MACBETH - SPECIALTY ITEM





Division II
Individual Marketing
PSJA North High School
Lizeth Gomez

LEAGUE HIGH SCHOOL
PRESENTS

Macbeth

WRITTEN BY WILLIAM SHAKESPEARE

MAY 1, 2015 2:30PM & 7:30PM

TICKETS \$6

LEAGUE THEATRE

555-5512



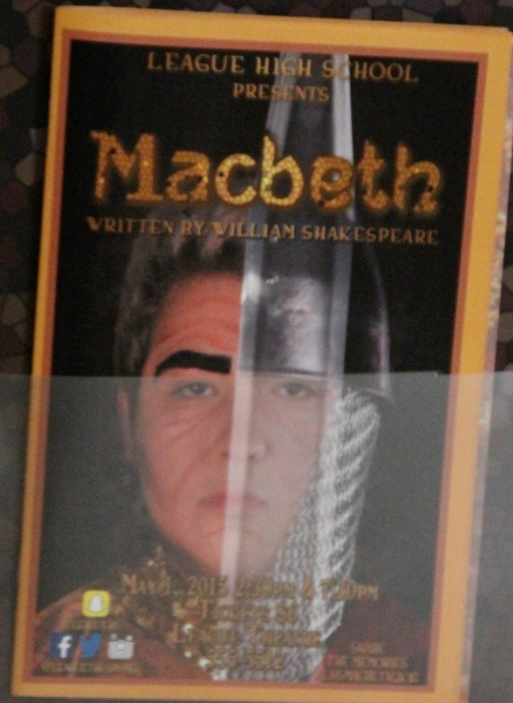
@LEAGUEHS



@LEAGUETHESPIANS

SHARE
THE MEMORIES
#LHSMACBETH2K16

PROGRAM



BUDGET

Macbeth

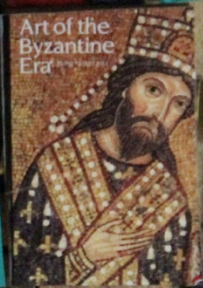
WRITTEN BY WILLIAM SHAKESPEARE

BUDGET





MADARIAGA
A B C D E F G H I
J K L M N N O P Q
R S T U V W X Y Z
1 2 3 4 5 6 7 8 9 0



every moment
is a new
experience
in nepal



neptouch 1
neptouch 2
neptouch 3



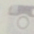
SPECIALTY ITEM NOTE PAD

LEAGUE HIGH SCHOOL
PRESENTS

Macbeth

WRITTEN BY WILLIAM SHAKESPEARE

MAY 1, 2015
LEAGUE THEATRE
2:30PM & 7:30PM
TICKETS \$6
555-5512

   SHARE
THE MEMORIES
@LHSACTING @LHSMACBETH2015 @LHSLEADS



Macbeth

WRITTEN BY WILLIAM SHAKESPEARE

JUSTIFICATION
PAPER



Division II
Individual Marketing
Temple High School
Jonathan Nabours

League High School presents

William Shakespeare's

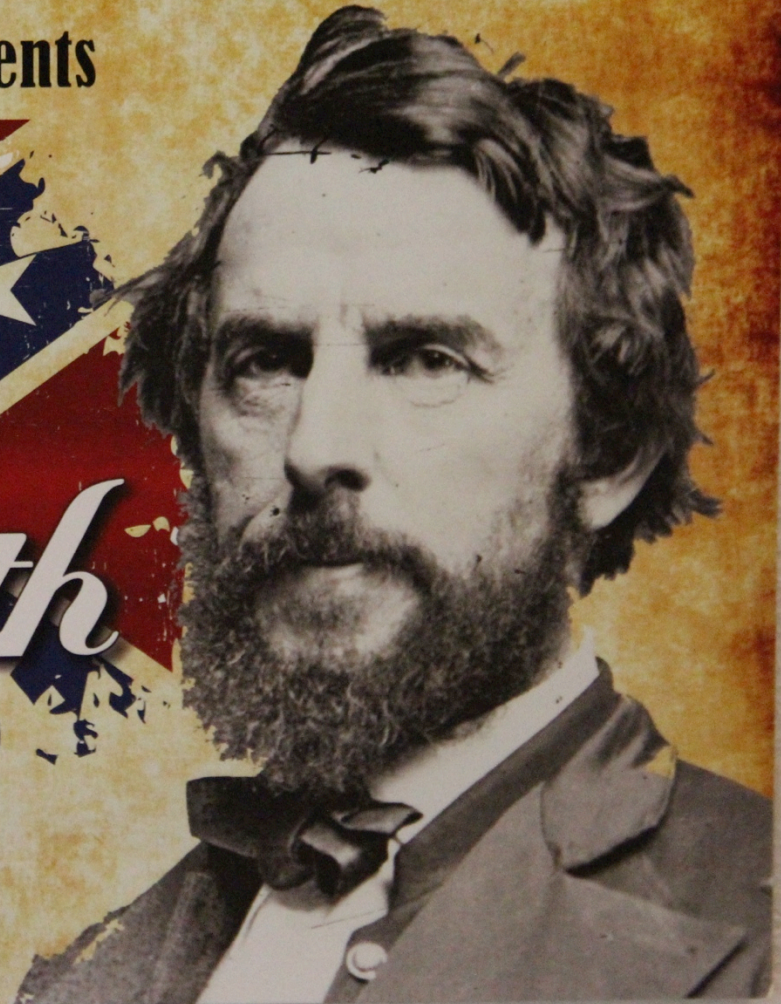
MacBeth

May 1, 2016 at 8 p.m.

League High School Theatre

www.ThespiansR.Us for more information

Tickets: \$8 in advance, \$10 at the door



MacBeth

Marketing Budget - \$450.00

75 Posters	\$1.00 each	\$75.00
100 Programs	\$0.77 each	\$77.00
75 Marine Corps Pin	\$2.00 each	\$150.00
75 Pin Attachments	\$1.25 each	\$93.75

Total \$395.75

the door





MacBeth

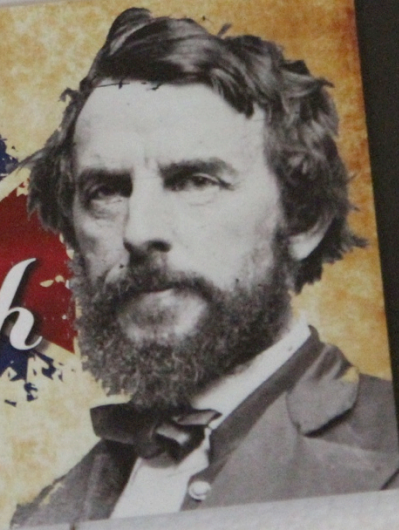


League High School presents



MacBeth

May 1, 2016 at 8 p.m.
League High School Theatre



Division II Group Design



Division II
Group Design
PSJA North High School

"FAIR IS FOUL,
AND FOUL IS FAIR."

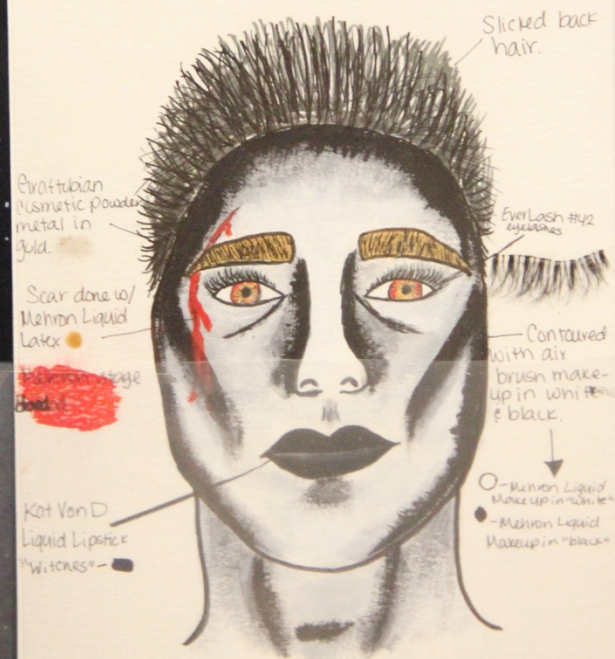
HAIR AND MAKEUP
INSPIRATION

"LET NOT LIGHT SEE MY BLACK
AND DEEP DESIRES."

JOIN
THE
DARK
SIDE



MACBETH





LADY MACBETH

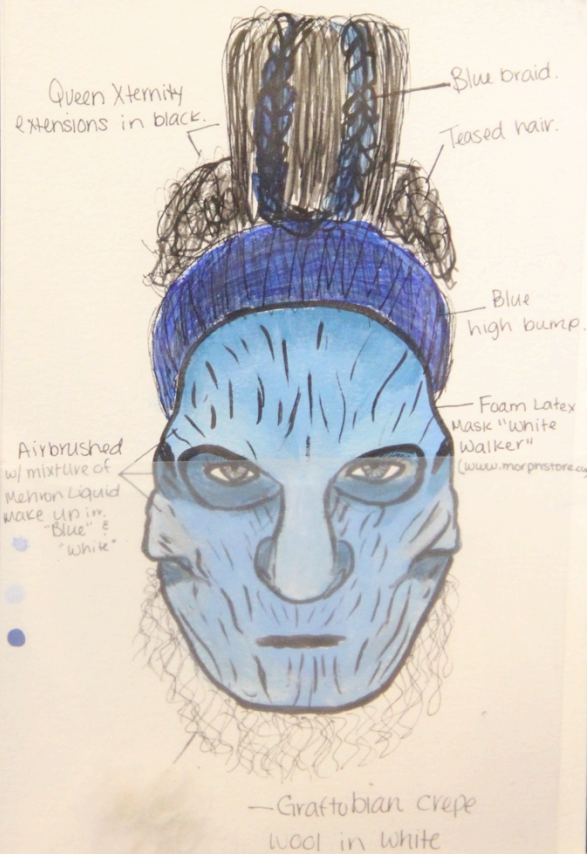




MACBETH

LA
MAC

THE WITCHES





LADY

THE
WITCHES



LADY MACDUFF



BANQUO



KING DUNCAN





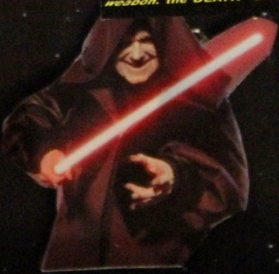
STAR
WARS



A long time ago in a galaxy far,
far away....

MARKETING
INSPIRATION

During the battle, Rebel ships
managed to shoot down Darth
to the Empire's ultimate
weapon, the DEATH STAR.



LEAGUE HIGH SCHOOL THEATER
PRESENTS



THE TRAGEDY OF

MACBETH

BY: WILLIAM SHAKESPEARE

TICKETS: \$6

SOLD AT LHS AUDITORIUM

SHOWTIMES: 2:00PM / 7:30PM



MAY 1ST

(956)-354-2427

PROGRAM



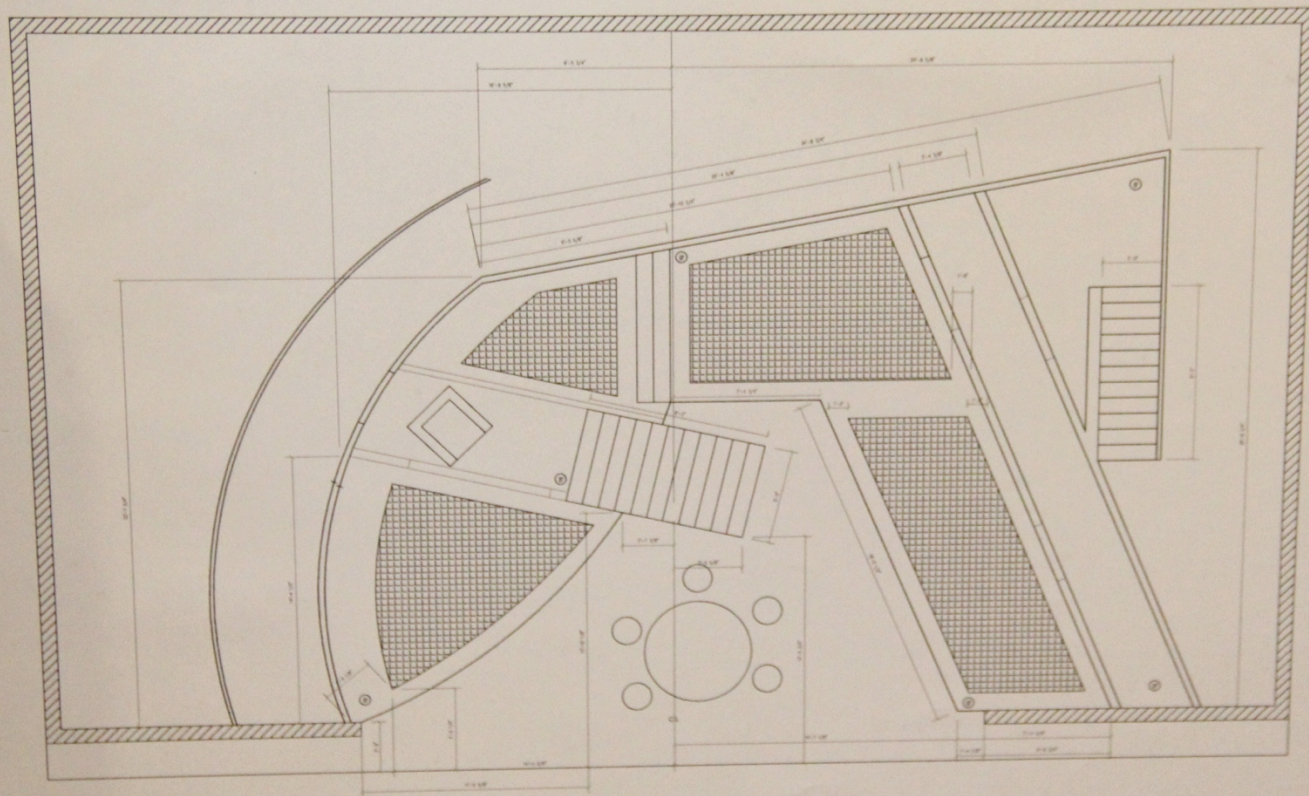
SPECIALTY ITEM



BUDGET

THE TRAGEDY OF
MACBETH
BY: WILLIAM SHAKESPEARE
**MARKETING CAMPAIGN
STRATEGY
BUDGET**





SCALE 3/16" = 1'-0"

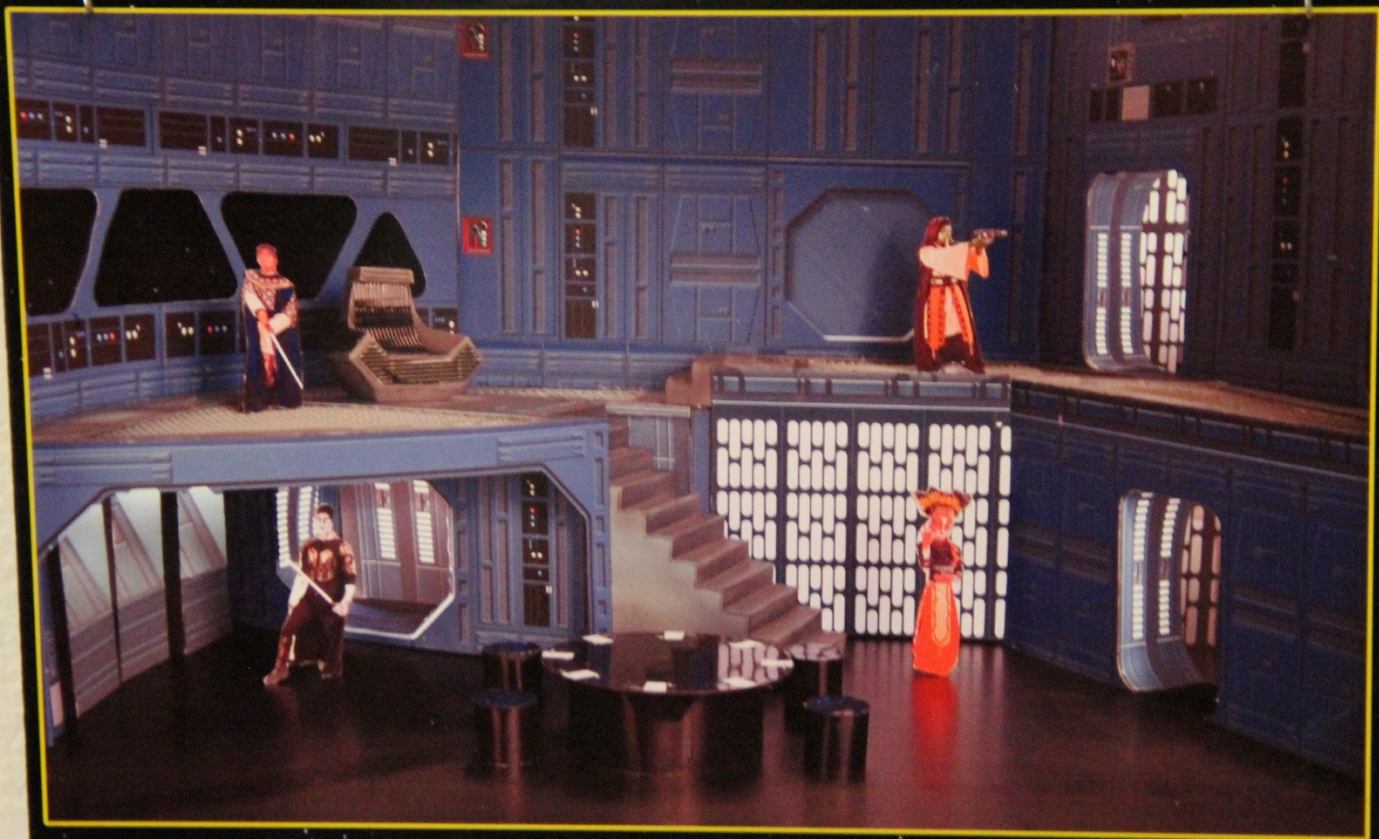
PROJECT NO. 1
DRAWN BY: J. L. LEE
DATE: 10/18

MACBETH

LEAGUE CITY HIGH SCHOOL

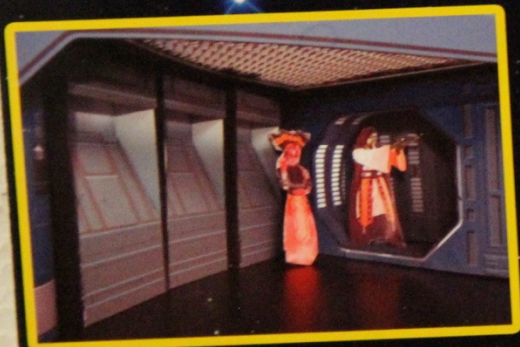
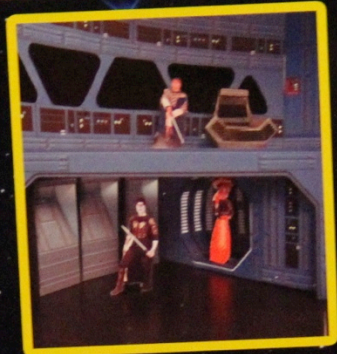
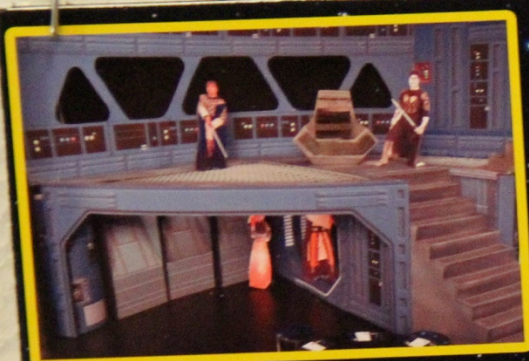
TEXAS

COPYRIGHT 2018



THE TRAGEDY OF
MACBETH
BY: WILLIAM SHAKESPEARE







Division II
Group Design
Temple High School

MACBETH

Marketing Budget - \$900.00

150 posters	each \$1	\$150
150 trading card packs	each \$3	\$450
300 programs	each \$0.77	\$231

Total Spent ----- \$831



SIDE SHOW



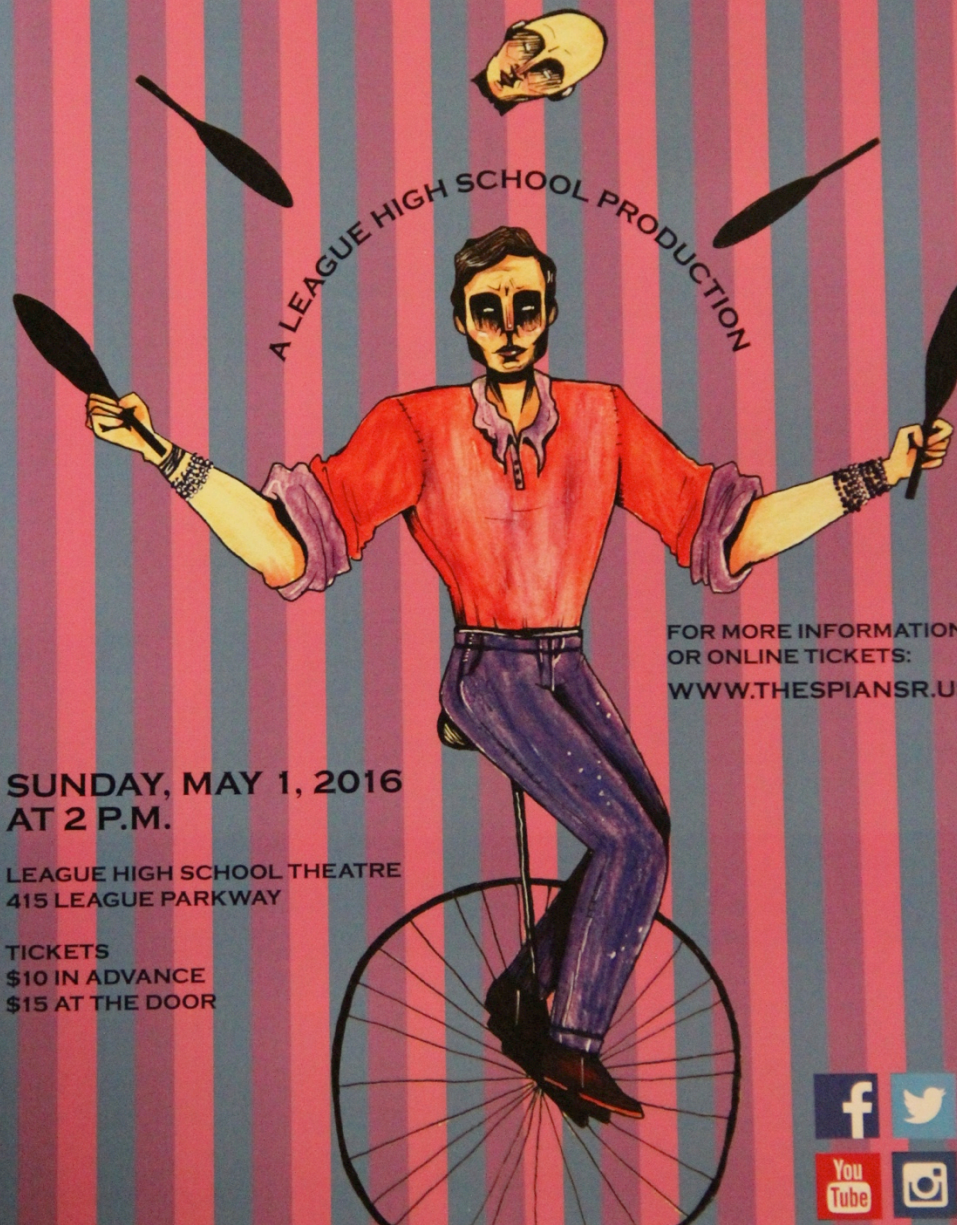
MACBETH

TRADING
CARDS



Back of Card

MACBETH



A LEAGUE HIGH SCHOOL PRODUCTION

FOR MORE INFORMATION
OR ONLINE TICKETS:
WWW.THESPIANSR.US

SUNDAY, MAY 1, 2016
AT 2 P.M.

LEAGUE HIGH SCHOOL THEATRE
415 LEAGUE PARKWAY

TICKETS
\$10 IN ADVANCE
\$15 AT THE DOOR



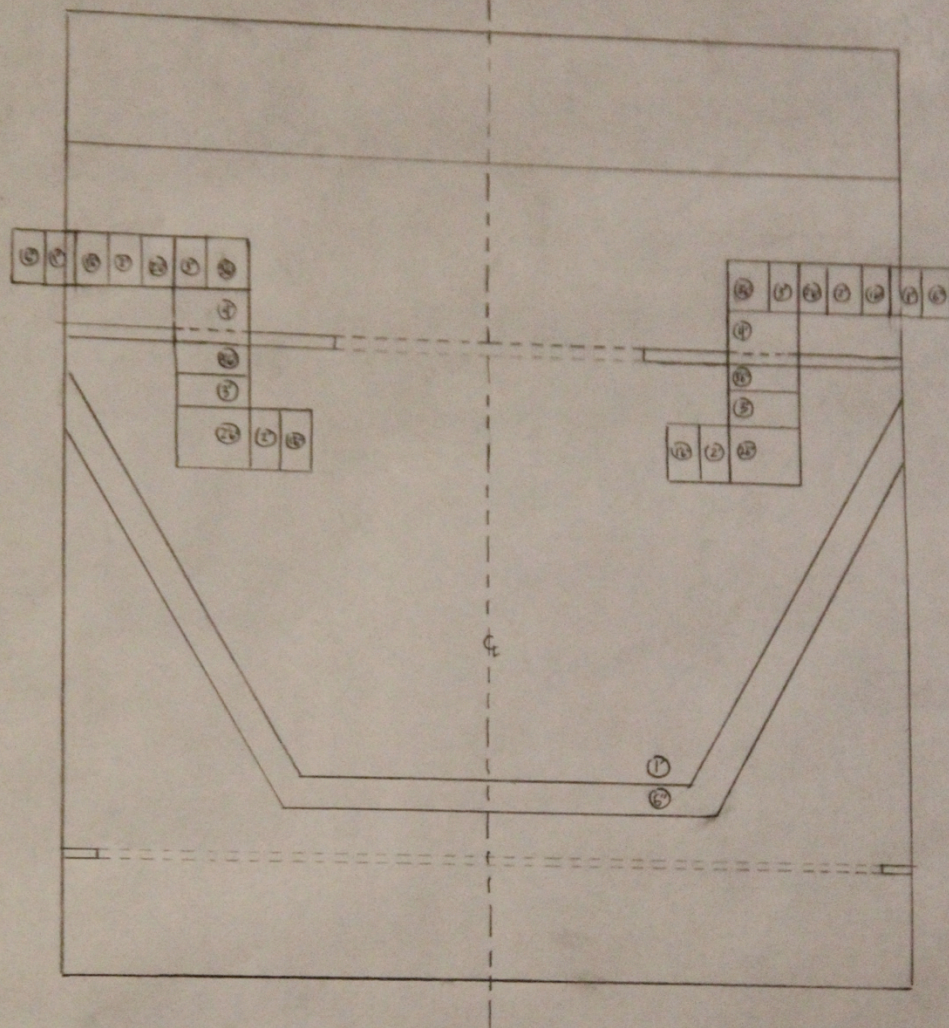
WILLIAM SHAKESPEARE'S **MACBETH**

A LEAGUE HIGH SCHOOL PRODUCTION

SUNDAY, MAY 1, 2016
AT 2 P.M.

LEAGUE HIGH SCHOOL THEATRE
419 LEAGUE PARKWAY





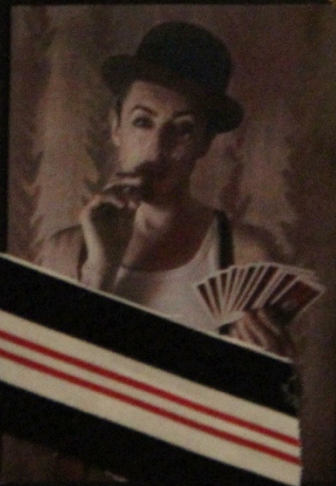
LEAGUE	
MACBETH	
GROUND PLAN	DWG NO
DIRECTOR: WILLIAM SHAKESPEARE	1



STORY ELLIOTT
OF 1







WILLIAM SHAKESPEARE



LADY MACBETH

ACT 1 SCENE 5

MACBETH
WILLIAM SHAKESPEARE



SEXTON

ACT 5 SCENE 5

MACBETH
WILLIAM SHAKESPEARE



MACBETH
WILLIAM SHAKESPEARE

LADY MACBETH
ACT 3 SCENE 4

MACBETH
WILLIAM



LADY MACBETH
EYE Liner Pencil Black
KLEANCOLOR Black Cherry Lipliner
BEN NYE Creme Colors- Milky Violet
CHEEK Powder & Color Palette Bold Red
Mehron Celebre HD Cream Foundation Light 22
BEN NYE Creme Foundation Black



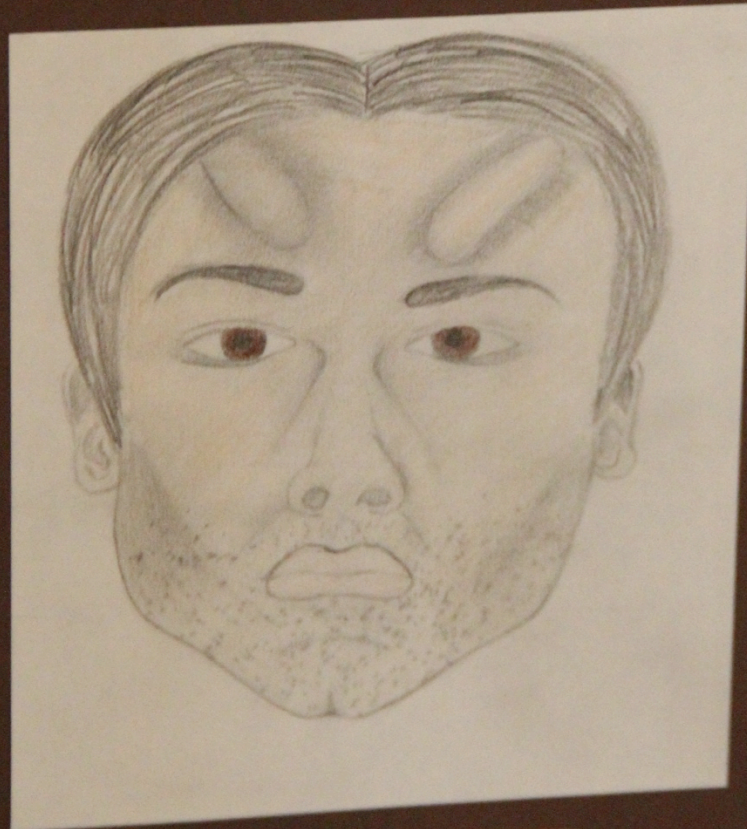
MACBETH
WILLIAM SHAKESPEARE

LADY MACBETH
ACT 3 SCENE 4

MACBETH
WILLIAM SHAKESPEARE

SEYTON
ACT 5, SCENE 5

MACBETH
WILLIAM



SEYTON



MACBETH
WILLIAM SHAKESPEARE

SEYTON
ACT 5 SCENE 5

MACBETH
WILLIAM SHAKESPEARE

MACBETH

WILLIAM SHAKESPEARE

HECATE

ACT 3 SCENE 5



HECATE

DEN NYE Crème Highlight Natural Lite

DEN NYE Crème Foundation Black

DEN NYE Lipstick Marilyn Red



MACBETH
WILLIAM SHAKESPEARE

HECATE
ACT 3 SCENE 5



Division II
Group Design
PSJA Southwest

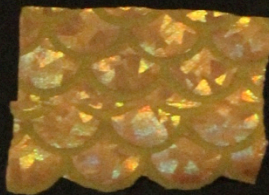


LADY MACBETH



H

FIRST WITCH



MACBETH



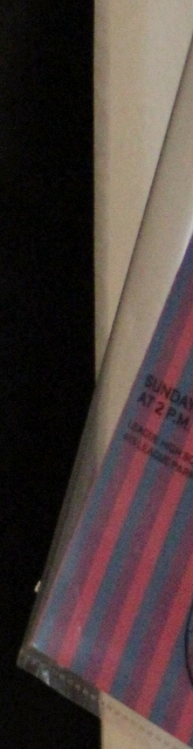
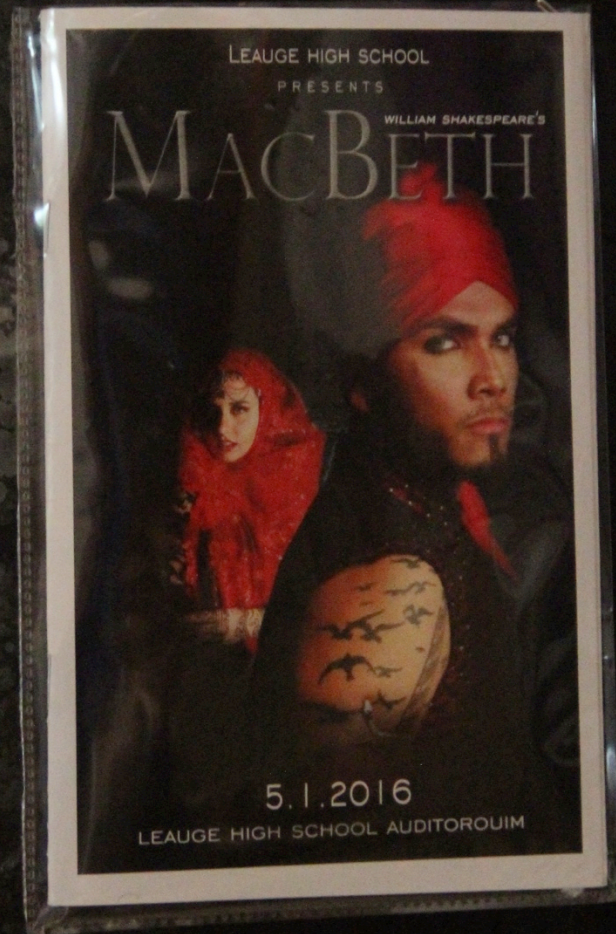
WILLIAM SHAKESPEARE'S
MACBETH



5.1.2010

PROGRAM

0



CAMPAIGN BUDGET

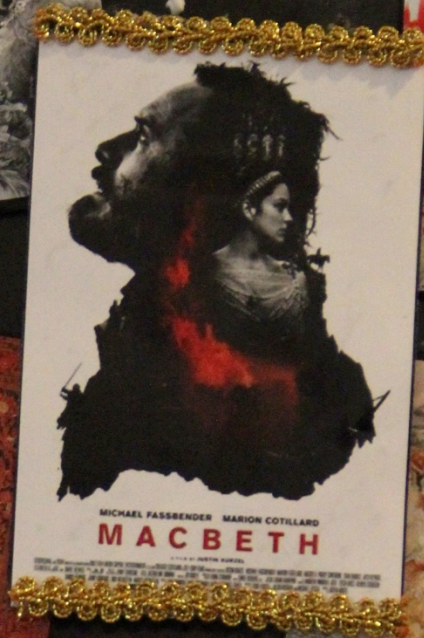
100 POSTERS	\$100
\$1.00EA	

500 PROGRAMS	\$250
0.50¢EA	

SPECIALTY ITEM	\$1,500
----------------	---------

600 TICKETS	\$65
0.13¢EA	

ESTIMATED PROFIT
WITH A FULL HOUSE
TICKET PRICE \$10

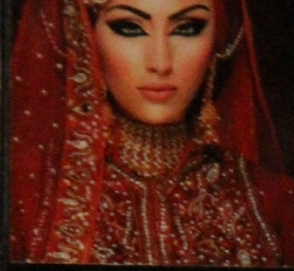


TICKET PRICE \$10
\$4,085

5

WATCH MACBETH
TRAILER
ON CHANNEL 5





FACE:

MACBETH



FACE:

- ❖ Foundation
 - L'Oréal True Match
 - W8 Crème café
- ❖ Concealer
 - Anastasia
 - -3.75
- ❖ Contour
 - L.A. Girl
 - Espresso
- ❖ Highlight
 - Anastasia Contour Palette (Powder)
 - Banana
 - L.A. Girl
 - Natural

❖ Powder

- Ben Nye Translucent Powder
- Fair
- Napoleon Perdis Loose Eye Dust
- Mosaic Gold

❖ Scar

- Ben Nye Fix Color wheel
- Deep Red

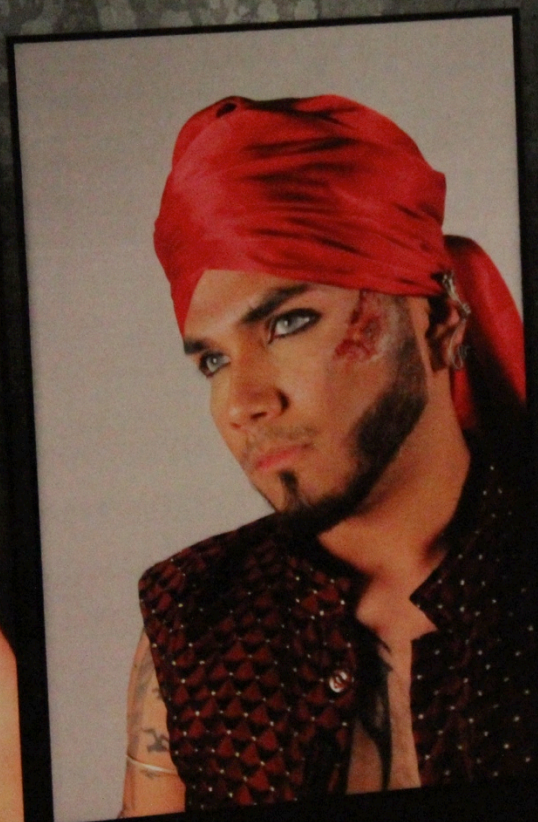
EYES

❖ Eyeliner

- Mac
- Smolder

❖ Eyebrows

- Maybelline Deep Brown



MACBETH



FACE:

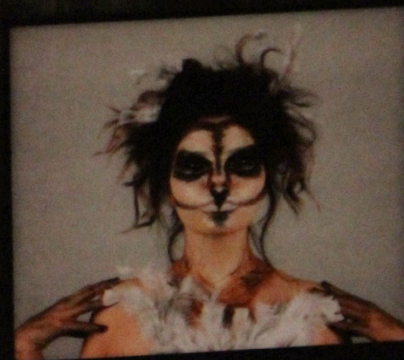
❖ Foundation

- Givenchy Photo Perfection Fluid Foundation
- 5 Perfect Praline
- NYX Eyeshadow base
- White
- L.A. Girl Concealer
- Toast

EYES:

❖ Eyeshadow

- Kat Von D Monarch Palette
- Dead Head



FIRST WITCH

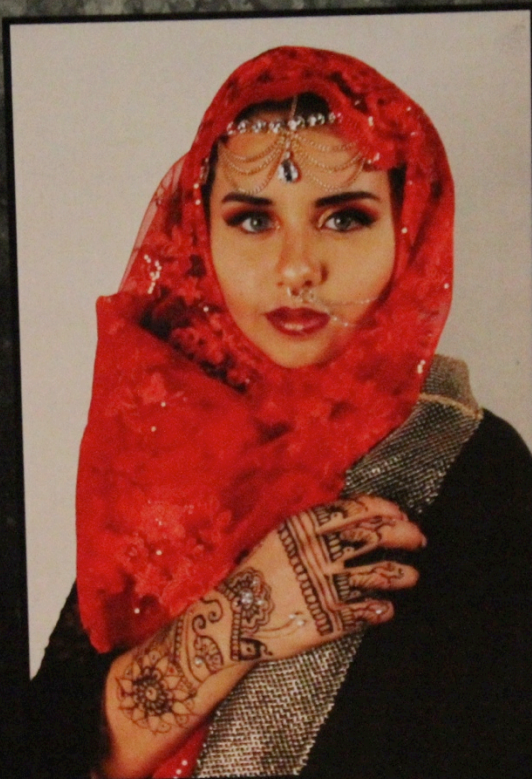
LADY MACBETH



- ♦ *Foundation*
 - L'Oréal True Match
 - W4-Natural Beige
- ♦ *Concealer*
 - Anastasia
 - I-5
- ♦ *Contour*
 - L.A. Girl
 - Toot
- ♦ *Blush*
 - Anastasia Contour Palette (Powder)
 - Banana
 - L.A. Girl

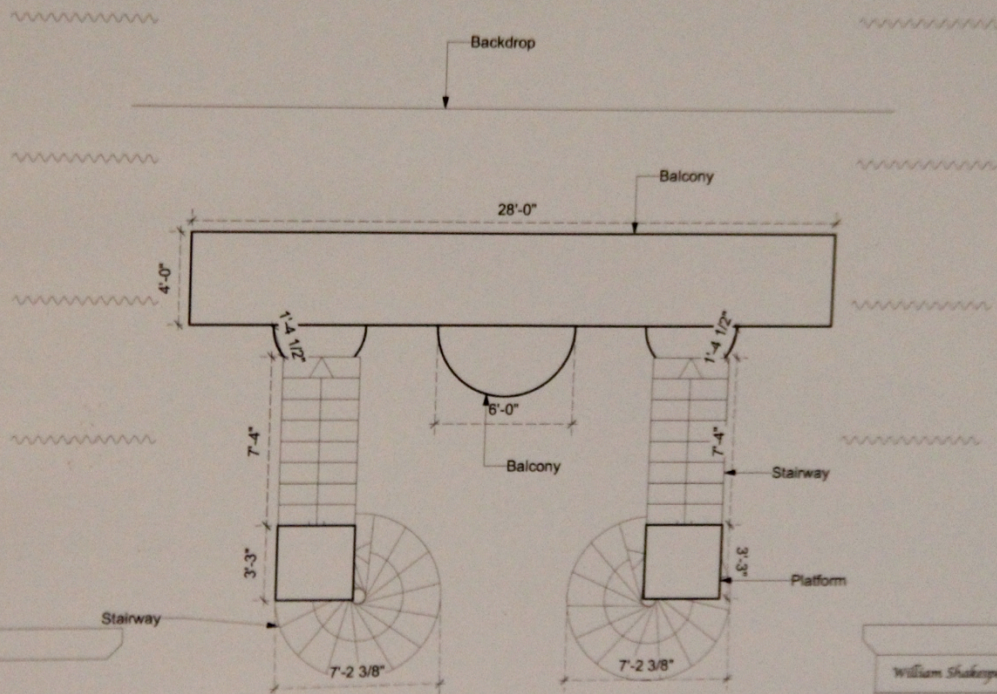
EYES

- ♦ *Eye Shadow*
 - Sephora Collection
 - Colorful Shadow and More Color 08
 - Bella Mente Fall
 - Color Gold (Light)
 - Kat von D
 - Raw power
 - MAKE UP FOR EVER
 - JTD-Cosmetics



LADY MACBETH





William Shakespeare's Macbeth

SCENIC DESIGN BY: DANIEL ORTIZ

SCALE: 3/16" = 1'

DATE: 1/25/16

PLATE
1 of 6





Division II
Group Design
Marble Falls High School



СПИТАЕМ ПОКОЛЕНИЕ БЕЗЗАВЕТНО
ПРЕДАНОЕ ДЕЛУ КОММУНИЗМА!

★ A B C D E F G H I J K L M
★ N O P Q R S T U V W X Y Z
★ a b c d e f g h i j k l m

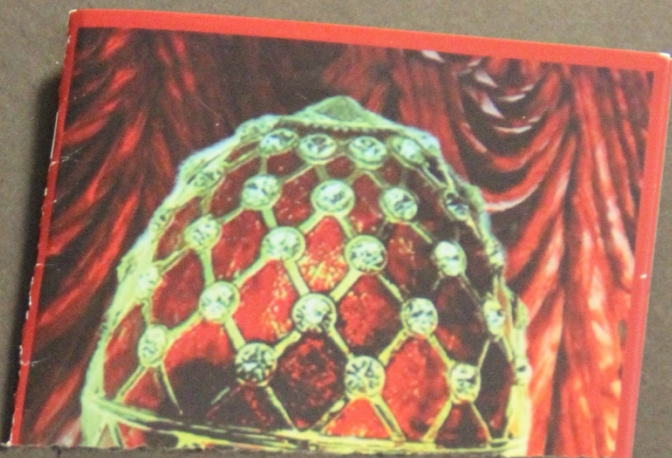


MACBETH

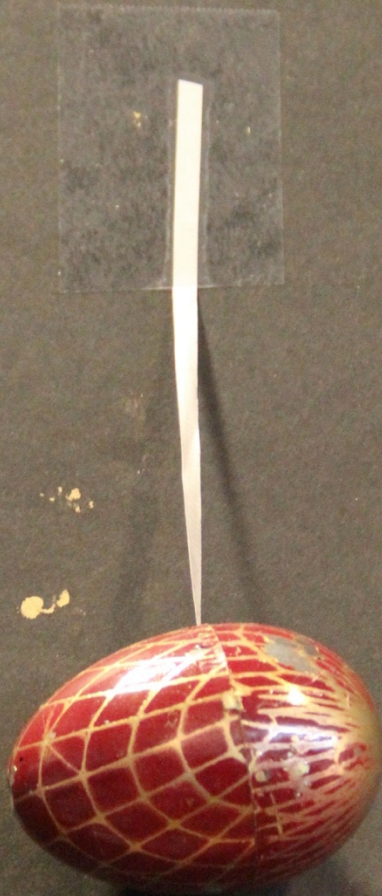


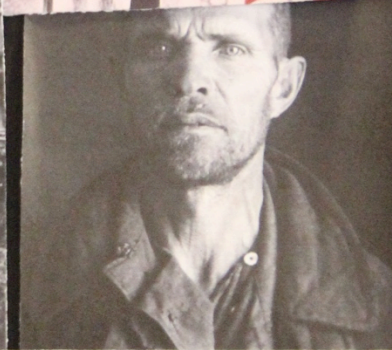
League High School Theatre

May 1st, 2016



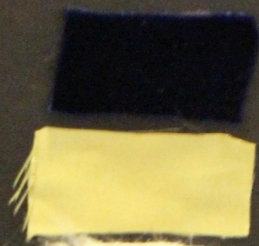
ITEM	COUNT	PRICE	VENDOR	TOTAL
Specialty term paper print	2 cans		7.95 Amazon.com	
Specialty term Plastic eggs	120 eggs		29.9 Amazon.com	
Programs		200	320 Print works	
Poster		25	37.5 Print Works	395.35







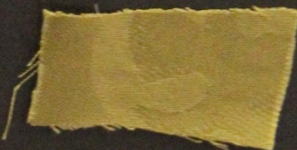
King Duncan



Macbeth



Witch # 1







Macbeth

Product Legend

Base	Ben Nye Creme Foundation P-42 Ultra Beige
Contour	Ben Nye Creme Contour Palette CS-21 Contour Brown
Highlight	Ben Nye Creme Contour Palette CH-0 Ultralight
Undereye	Ben Nye Master Bruise Wheel EW-4 Blue and Maroon
Eyelids	Ben Nye Master Bruise Wheel EW-4 Maroon
Mustache	Purchased False Mustache
Adhesive	



Macbeth



MACBETH
THEATRE
OL $\frac{1}{4}$ " = 1'
JE



Witch #1

Product Legend

Face	Ben Nye Liquid Latex Natural
Nose/Chin	Ben Nye Liquid Latex Natural and Cotton Balls Prosthetics were made by designer
Base	Ben Nye Matte HD Foundation BQ-1 Bamboo 1 Ben Nye Master Bruise Wheel EW-4 Green Mixed
Contour	Ben Nye Creme Contour Palette CS-21 Contour Brown
Highlight	Ben Nye Creme Contour Palette CH-0 Ultralight
Wrinkles	Ben Nye Creme Contour Palette CS-21 Contour Brown Ben Nye Creme Contour Palette CH-0 Ultralight
Teeth	Ben Nye Tooth Colors 02/TC3 Zombie Rot
Hair	Mehron Clown White ME13OL
Moss	Proflora preserved Sheet Moss and preserved Spanish Moss



Witch #1





Division II
Group Design
Marble Falls High

Product Legend

Base	Ben Nye Matte HD Foundation BO-1 Bamboo 1
Contour	Ben Nye Creme Contour Palette CS-21 Contour Brown
Highlight	Ben Nye Creme Contour Palette CH-0 Ultralight
Wrinkles	Ben Nye Creme Contour Palette CS-21 Contour Brown Ben Nye Creme Contour Palette CH-0 Ultralight
Beard/ Mustache	Purchased False Mustache and Beard
Blush	Ben Nye Powder Blush Misty Pink DR-6

King Duncan

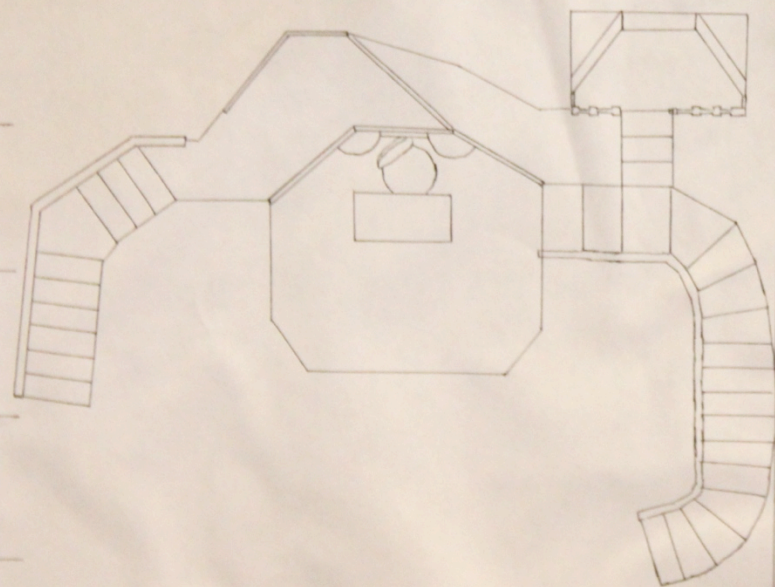


King Duncan

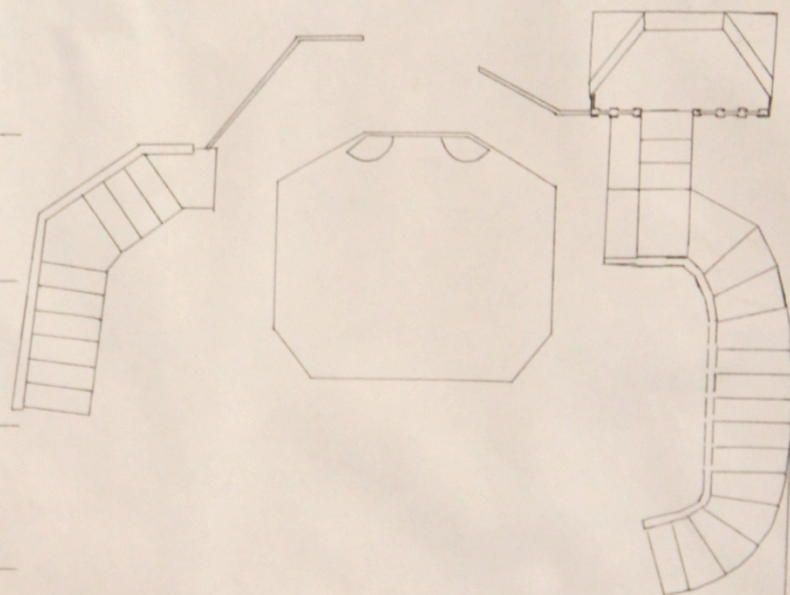




№ 3316	Имя	Фамилия
	Возраст	Рост
	Вес	Цвет волос
	Цвет глаз	Цвет кожи
	Дата	Место



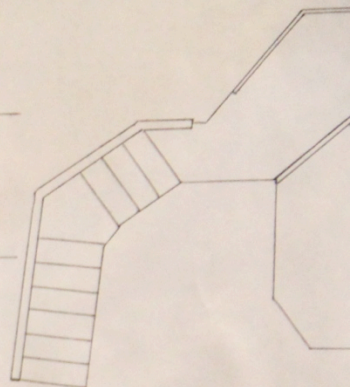
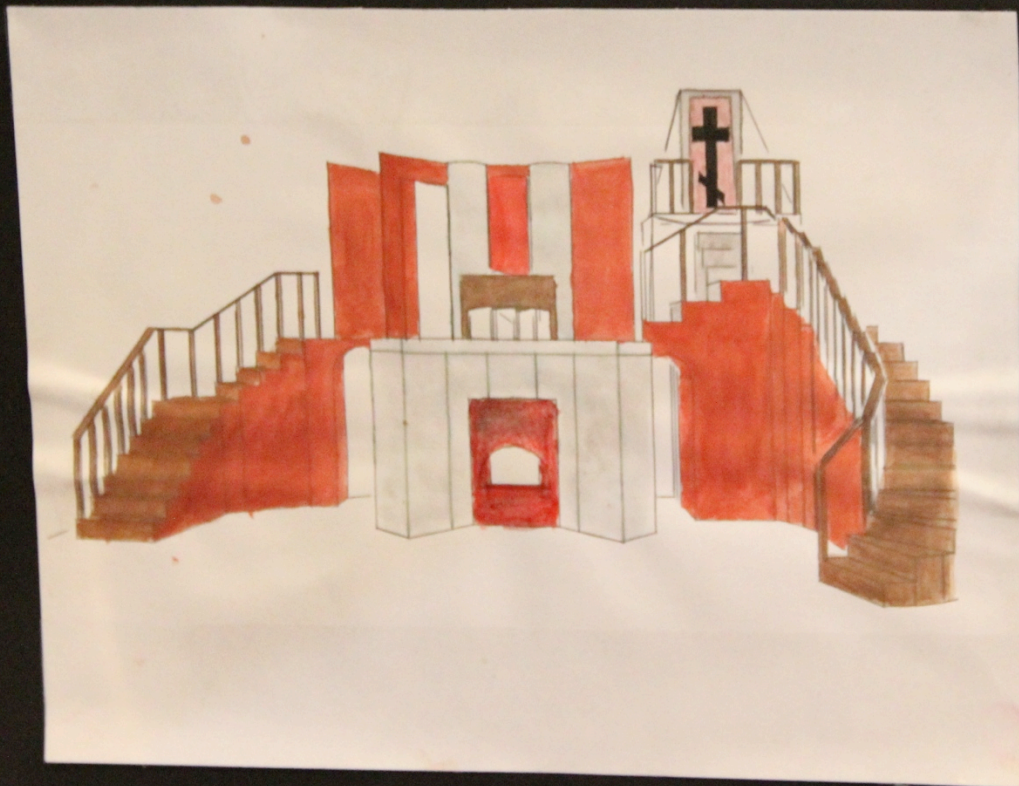
TOP
VIEW



GROUND
FLOOR

THE TRAGEDY OF MACBETH	
LEAGUE HIGH SCHOOL THEATRE	
LEAGUE HIGH SCHOOL	$\frac{1}{4}'' = 1'$
COREY BOGUE	

Eyelids	Ben Nye Master Bruise White Maroon
Mustache	Purchased False Mustache
Adhesive	Ben Nye Spirit Gum matte Adhesive
Scar	Ben Nye Liquid Latex Natural Lip Color LC-5 Natural Prosthetic was made by designer



TOP
VIEW

Special THANK YOU to Bryan Honl from PSJA North High School for providing photographs used in this presentation. There were some state winners that were not able to be photographed. If you are a representative from an entry not featured here we would welcome photos to add to these.