

CURRENT ISSUES AND EVENTS



BRADLEY WILSON, PH.D. | CONTEST DIRECTOR
CAPITAL CONFERENCE | 2017

Photo by Keith McDuffee

Only **45 percent** of Americans were able to correctly identify what the initials in GOP stood for.

55 percent of Americans believe that Christianity was written into the Constitution and that the founding fathers wanted One Nation Under Jesus

When asked on what year 9/11 took place, **30 percent** of Americans were unable to answer the question correctly.

When looking at a map of the world, young Americans had a difficult time correctly identifying Iraq (**14 percent**) and Afghanistan (**17 percent**).

ABOUT THE CONTEST



- 40 objective questions
- Essay (10 points)
- 60 minutes
- Top score individual (objective plus essay)
- Top score team (objective only; top three individuals constitute team score)

WHO MAY ENTER?



- School may enter four students at district.
- Three individuals advance from district to regional to state.
- Four members of winning team advance.

WHAT AREAS WILL YOU COVER?

- War and conflict
- Politics
- Health
- Science/technology
- Economics (economy, deficit, unemployment)
- Media
- Crime
- Education
- Environment
- Awards /Honors (not entertainment)

ELEMENTS OF NEWS

- **Timeliness** — when?
- **Conflict** — political, ideological, cultural
- **Consequence** — what? why is it important?
- **Prominence** — who?
- **Proximity** — where? how?
- **Oddity** — unusual events that make the news
- **Human Interest** — newsmakers in a more human role

WHO QUESTION

Who is Jorge Mario Bergoglio?

- A. Cardinal and Archbishop in New York City
- B. Trump fund-raiser charged with fraud and violating campaign-finance laws
- C. First Hispanic on the U.S. Supreme Court
- D. Pope Francis of Assisi

WHO QUESTION



Who is Jorge Mario Bergoglio?

- A. Cardinal and Archbishop in New York City
- B. Trump fund-raiser charged with fraud and violating campaign-finance laws
- C. First Hispanic on the U.S. Supreme Court
- D. Pope Francis of Assisi

WHO QUESTION

Which Rowan County (Kentucky) Clerk was jailed after s/he refused to grant marriage licenses?

- A. David L. Bunning
- B. Ted Cruz
- C. Josh Earnest
- D. Kim Davis

WHO QUESTION



Which Rowan County (Kentucky) Clerk was jailed after s/he refused to grant marriage licenses?

- A. Melissa Thompson
- B. Ted Cruz
- C. Josh Earnest
- D. Kim Davis**

in
ent

[Clerk Rejects Proposal to Let Deputies Issue Marriage Licenses](#)



[Kentucky Clerk Who Said 'No' to Gay Couples Won't Be Alone in Court](#)

[Health Care Rules Proposed to Shield Transgender Patients From Bias](#)

PAID POST: CARTIER
[Could You Climb This Norwegian Cave?](#)

Cartier



[3 Corrections Deputies in California Charged With Murder in Death of Mentally Ill Inmate](#)

ANNOUNCING
LOW RATES
— ON AUTO INSURANCE —

\$392

over State Farm

You could save up to

SAVE UP TO

over Allstate

SAVE UP TO

over Farmers

*Reported savings from 2014 full data survey



START YOUR QUOTE

U.S.

3565 COMMENTS

Clerk in Kentucky Chooses Jail Over Deal on Same-Sex Marriage

By ALAN BLINDER and TAMAR LEWIN SEPT. 3, 2015



Kim Davis, the clerk of Rowan County in Kentucky, after refusing to grant a marriage certificate to Robbie Blankenship and Jesse Cruz on Wednesday. Ty Wright/Getty Images

Email

Share

ASHLAND, Ky. — A county clerk who, through her defiance of a federal court order to issue marriage licenses to gay couples, became a national symbol of religious opposition to same-sex marriage was jailed Thursday after a federal judge here declared her in contempt of court.



MULTIPLIES.
AMPLIFIES.
MESMERIZES.
INTRODUCING AUDACIOUS MASCARA
SHOP NOW

NARS

STORIES FROM OUR ADVERTISERS

WHERE QUESTION

As one of his last orders, U.S. President Barack Obama announced permanent protection from oil and gas drilling where?

- A. the Bears Ears National Monument
- B. the Gold Butte National Monument
- C. all land in Massachusetts and Virginia
- D. Chukchi and Beaufort sea in the Arctic

WHERE QUESTION



Photo by Lwp Kommunikáció

As one of his last orders, U.S. President Barack Obama announced permanent protection from oil and gas drilling where?

- A. the Bears Ears National Monument
- B. the Gold Butte National Monument
- C. all land in Massachusetts and Virginia
- D. Chukchi and Beaufort sea in the Arctic

WHAT QUESTION

According to scientists, what is the most likely cause of the baffling plague that destroyed thousands of U.S. honeybee colonies as part of what is known as Colony Collapse Disorder?

- A. climate change
- B. a virus, possibly imported from china or Australia
- C. pesticides
- D. parasites

WHAT QUESTION

According to scientists, what is the most likely cause of the baffling plague that destroyed thousands of U.S. honeybee colonies as part of what is known as Colony Collapse Disorder?

- A. climate change
- B. a virus, possibly imported from china or Australia
- C. pesticides**
- D. parasites

WHICH QUESTION

According to a Government Accountability Office report released this spring, the Pentagon plans to destroy more than \$1 billion worth of which of the following?

- A. documents related to spying on American civilians
- B. nuclear weapons housed in Midwest silos
- C. ammunition, including bullets and missiles
- D. overseas troop housing

WHICH QUESTION

According to a Government Accountability Office report released this spring, the Pentagon plans to destroy more than \$1 billion worth of which of the following?

- A. documents related to spying on American civilians
- B. nuclear weapons housed in Midwest silos
- C. ammunition, including bullets and missiles
- D. overseas troop housing

WHICH QUESTION

Two of Donald Trump's top cabinet picks were born in Texas. Which two?

- A. Ted Cruz and Jeff Sessions
- B. Sid Miller and Andy Puzder
- C. Cathy McMorris Rodgers and Jeb Hensarling
- D. Rick Perry and Rex Tillerson

WHICH QUESTION

Two of Donald Trump's top cabinet picks were born in Texas. Which two?

- A. Ted Cruz and Jeff Sessions
- B. Sid Miller and Andy Puzder
- C. Cathy McMorris Rodgers and Jeb Hensarling
- D. Rick Perry and Rex Tillerson

NO CELEBRITY QUESTIONS

What was Justin Bieber's excuse for being arrested for cocaine possession and DWI?

- A. No one is perfect.
- B. I was overtired and working myself to death.
- C. The drugs weren't mine.
- D. all of the above

NO CELEBRITY QUESTIONS



Who cares?

BUSINESS QUESTIONS

Making it the most-watched finale, with almost 10 million viewers, what PBS television series ended in March after six seasons?

- A. Downton Abbey.
- B. Sesame Street.
- C. Doctor Who.
- D. The Magic School Bus

BUSINESS QUESTIONS

Making it the most-watched finale, with almost 10 million viewers, what PBS television series ended in March after six seasons?

- A. *Downton Abbey.*
- B. Sesame Street.
- C. Doctor Who.
- D. The Magic School Bus

BUSINESS QUESTIONS

Even before it opened in China, Disney's new movie "Star Wars: The Force Awakens" was breaking records.

- Fastest film to gross \$1 billion – 12 days.
- Biggest worldwide opening weekend and single weekend gross – \$529 million.
- Biggest worldwide December opening weekend – \$529 million.

However, the movie, which opened Dec. 18, 2015, was not without controversy. Discuss some of the issues surrounding the production and release of the box office sensation.

NO IMPOSSIBLE STUFF

Argentina's ruling left-leaning coalition has chosen its candidate for the October presidential elections. Who is it?

- A. First lady Christina Fernandez de Kirchner
- B. Gen. Javier Lozano Alarcon
- C. Economy Minister Domingo Cavallo
- D. Buenos Aires Governor Carlos Ruckauf

NO IMPOSSIBLE STUFF

**Argentina's ruling left-leaning coalition has chosen its candidate for the October presidential elections.
Who is it?**

- A. First lady Christina Fernandez de Kirchner
- B. Gen. Javier Lozano Alarcon
- C. Economy Minister Domingo Cavallo
- D. Buenos Aires Governor Carlos Ruckauf

NO NUMBER QUESTIONS

Iran announced that it had reached its goal of running _____ centrifuges for uranium enrichment, a much higher number than recently estimated by the United Nations' atomic agency.

- A. 50
- B. 400
- C. 3,000
- D. 12,000

NO NUMBER QUESTIONS

Iran announced that it had reached its goal of running _____ centrifuges for uranium enrichment, a much higher number than recently estimated by the United Nations' atomic agency.

- A. 50
- B. 400
- C. 3,000**
- D. 12,000

HOWEVER, I MIGHT ASK...

This nation announced that it had reached its goal of running 3,000 centrifuges for uranium enrichment, a much higher number than recently estimated by the United Nations' atomic agency.

- A. North Korea
- B. Iran
- C. South Africa
- D. Israel

HOWEVER, I MIGHT ASK...

This nation announced that it had reached its goal of running 3,000 centrifuges for uranium enrichment, a much higher number than recently estimated by the United Nations' atomic agency.

A. North Korea

B. Iran

C. South Africa

D. Israel

NOTHING TOO EASY

Which American president was responsible for the construction of the Affordable Healthcare Act, popularly known as Obamacare?

- A. Ronald Reagan
- B. Gerald Ford
- C. Bill Clinton
- D. Barack Obama

NOTHING TOO EASY

Which American president was responsible for the construction of the Affordable Healthcare Act, popularly known as Obamacare?

- A. Ronald Reagan
- B. Gerald Ford
- C. Bill Clinton
- D. Barack Obama**

NO SPORTS QUESTIONS

What horse won the Triple Crown in 2015?

- A. Secretarian
- B. Seattle Slew
- C. Affirmed
- D. American Pharoah

HOWEVER, I MIGHT ASK...



What horse won the Triple Crown in 2015?

- A. Secretarian
- B. Seattle Slew
- C. Affirmed
- D. American Pharoah**

HOWEVER, I MIGHT ASK...

American Pharaoh won \$800,000 in what sporting competition, the first time anyone had won it since 1978?

A. Super Bowl

B. Triple Crown

C. Cricket World Cup

D. Formula One Racing

SOME PROBLEM QUESTIONS

POLITICS

Why did the Democratic National Committee suspend Sen. Bernie Sanders' presidential campaign's access to the DNC voter database?

- A. Campaign workers took advantage of a software error to access Hillary Clinton's confidential voter information.
- B. Campaign workers broke into Hillary Clinton's headquarters to install listening devices.
- C. Campaign workers embedded themselves on Donald Trump's staff to get inside knowledge.
- D. Campaign workers hacked into it to get confidential data on other candidates.

POLITICS

Why did the Democratic National Committee suspend Sen. Bernie Sanders' presidential campaign's access to the DNC voter database?

- A. Campaign workers took advantage of a software error to access Hillary Clinton's confidential voter information.**
- B. Campaign workers broke into Hillary Clinton's headquarters to install listening devices.
- C. Campaign workers embedded themselves on Donald Trump's staff to get inside knowledge.
- D. Campaign workers hacked into it to get confidential data on other candidates.**

POLITICS

Why did the Democratic National Committee suspend Sen. Bernie Sanders' presidential campaign's access to the DNC voter database?

<http://www.cnn.com/2015/12/18/politics/bernie-sanders-campaign-dnc-suspension/>

D is wrong. A is correct. The information wasn't on other candidates anyway. It was on voters.

We sent out a correction the day of Region. "On the CURRENT ISSUES answer key for the Region test, it has been brought to our attention and confirmed that the answer key for #14 is incorrect. #14--A is the correct answer, not D."

CIVIL RIGHTS

In a red state known for limiting civil rights protections for LGBT people and regulating who uses which public bathrooms, which candidate for North Carolina governor claimed victory on election night although the election was too close to call even a week after the election?

- a. Republican Roy Cooper
- b. Democrat Pat McCrory
- c. Libertarian Lon Cecil
- d. Republican Robert Brawley

CIVIL RIGHTS

In a red state known for limiting civil rights protections for LGBT people and regulating who uses which public bathrooms, which candidate for North Carolina governor claimed victory on election night although the election was too close to call even a week after the election?

- a. ~~Republican Roy Cooper~~
- b. ~~Democrat Pat McCrory~~
- c. Libertarian Lon Cecil
- d. Republican Robert Brawley

CIVIL RIGHTS

In a red state known for limiting civil rights protections for LGBT people and regulating who uses which public bathrooms, **which candidate** for North Carolina governor claimed victory on election night although the election was too close to call even a week after the election?

- a. Democrat Roy Cooper
- b. Republican Pat McCrory
- c. Libertarian Lon Cecil
- d. Republican Robert Brawley

AND NOW A WORD ABOUT DONALD TRUMP



IMPORTANT TOPICS

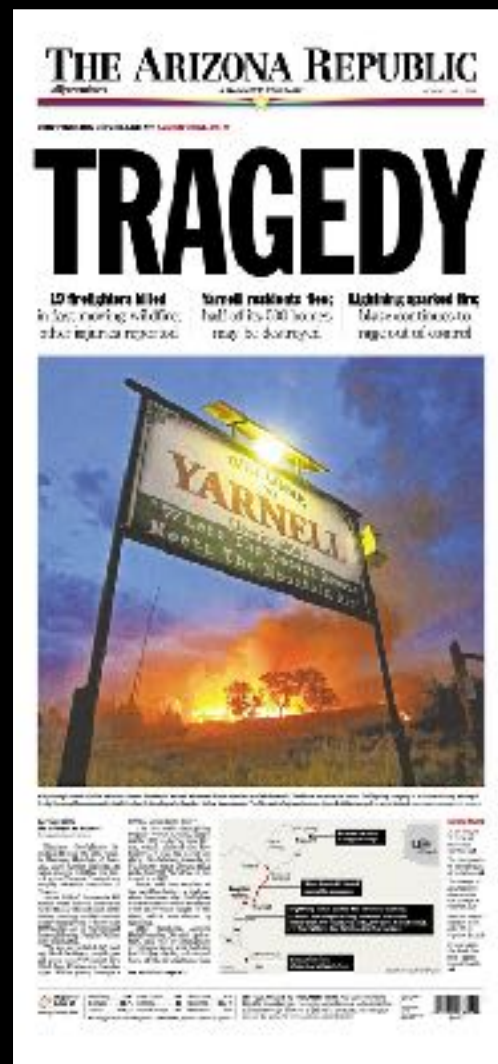
- United States presidency
- National and state elections
- Texas politics
- International conflict
- Iranian nuclear ambitions
- U.S. Supreme Court decisions
- The economy and significant economic events
- Global climate change
- Major scientific and technological developments

ANY RATIOS?



- No. I play it by ear depending on news flow. In an election year, you can expect a lot of national news. And, you might expect to see questions regarding Texas implications to a national story or event.

THE ESSAY



The essay matters.

THE ESSAY

World War I, also known as the First World War or the Great War, was a global war mostly centered in Europe that began formally in 1914 and ended in 1918. World War II was a global war that lasted from 1939 to 1945. It was the most widespread war in history, and directly involved more than 100 million people from more than 30 countries. Both global conflicts began as a series of regional conflicts that grew to encompass economic, industrial and scientific capabilities worldwide.

Given the number of conflicts in which the United States is involved in now, some people believe we are leading up to World War III. Discuss the conflicts in which the United States is involved now and their relevance to American citizens.

THE ESSAY

An article on making small talk in the Huffington Post discussed how and why people resort to talking about the weather. Lindsay Holmes wrote that research has some possible insight: "We're directly affected by our environment. Studies have shown that our moods and overall well-being are influenced by the weather. So when the rising temperature or the bitter cold is the first thing on your mind, it might be hard to discuss anything else." Certainly, the weather has been front and center in the news during the last six months. So, discuss the weather and the implications of some of the recent newsworthy weather events.

FROM THE CONSTITUTION

REPRESENTATION.

(1) **Individual Competition.** Each participant high school may enter as many as four individuals in the district meet, all of whom may place. In districts with more than eight schools, district executive committees may elect to limit entries to three.

(2) **Team Competition.** The individuals entered at district constitute the team. A team shall have a minimum of three contestants compete in order to participate in the team competition.

The **team score** is determined by adding the highest three individual scores in the objective portion of the contest. All four members of the winning team will advance to the next higher level of competition.

ABOUT INDIVIDUAL SCORING



- Objective + essay score.
- Only top eight objective scorers advance to essay round.

ABOUT INDIVIDUAL SCORING OBJECTIVE QUESTIONS

- Britney — 32
- Lindsay — 30
- Tara — 28
- Juan — 27
- Jayden — 26
- Sophia — 26
- Nicole — 25
- Hilary — 24

- Noah — 23
- Jacob — 22
- Mary-Kate — 21

All other contestants
answered fewer than 21
correctly.

Top eight advance to the essay round.

ABOUT INDIVIDUAL SCORING

ADD THE ESSAY QUESTIONS

NAME	OBJECTIVE	ESSAY	TOTAL
BRITNEY	32	5	37
LINDSEY	30	7	37
TARA	28	9	37
JUAN	27	10	38
JAYDEN	26	8	34
SOPHIA	26	5	31
NICOLE	25	3	28
HILARY	24	9	33

ABOUT INDIVIDUAL SCORING

FINAL PLACES

NAME	OBJECTIVE	ESSAY	TOTAL	PLACE
BRITNEY	32	5	37	4th
LINDSEY	30	7	37	3rd
TARA	28	9	37	2nd
JUAN	27	10	38	1st
JAYDEN	26	8	34	5th
SOPHIA	26	5	31	
NICOLE	25	3	28	
HILARY	24	9	33	6th

ABOUT INDIVIDUAL SCORING

FINAL PLACES

NAME	OBJECTIVE	ESSAY	TOTAL	PLACE
BRITNEY	32	5	37	4th
LINDSEY	30	7	37	3rd
TARA	28	9	37	2nd
JUAN	28	10	38	1st
JAYDEN	26	8	34	5th
SOPHIA	26	5	31	
NICOLE	25	3	28	
HILARY	24	9	33	6th

ABOUT TEAM SCORING

- Top three-member team determined **by objective scores only**.
- For example, TEAM A:
 - Kevin — 29
 - Brad — 26
 - Jake — 25
 - Matt — 21 (lowest score doesn't count)
 - Team score: 80

WHAT ABOUT THE WILD CARD?

- Best **second place** team among the eight districts in a region goes to region.
- Best **second place** team among the four regions in the state qualifies to the State Meet.

8 DISTRICTS PER REGION

4 REGIONS IN THE STATE

- District 1 — 78
 - District 2 — 72
 - District 3 — 69
 - District 4 — 83
 - District 5 — 66
 - District 6 — 81
 - District 7 — 70
 - District 8 — 68
- Region 1 — 81
 - Region 2 — 77
 - Region 3 — 72
 - Region 4 — 83

WHAT IF THERE'S A TIE? FOURTH TEAM MEMBER'S SCORE WILL BREAK TIE.

- District 1 — 78
- District 2 — 72
- District 3 — 69
- District 4 — 83
- District 5 — 66
- District 6 — 83
- District 7 — 70
- District 8 — 68

District 4 (83)

Jennifer - 30

Courtney - 27

David - 26

Matthew - 25

District 6 (83)

Tony - 32

Carmela - 28

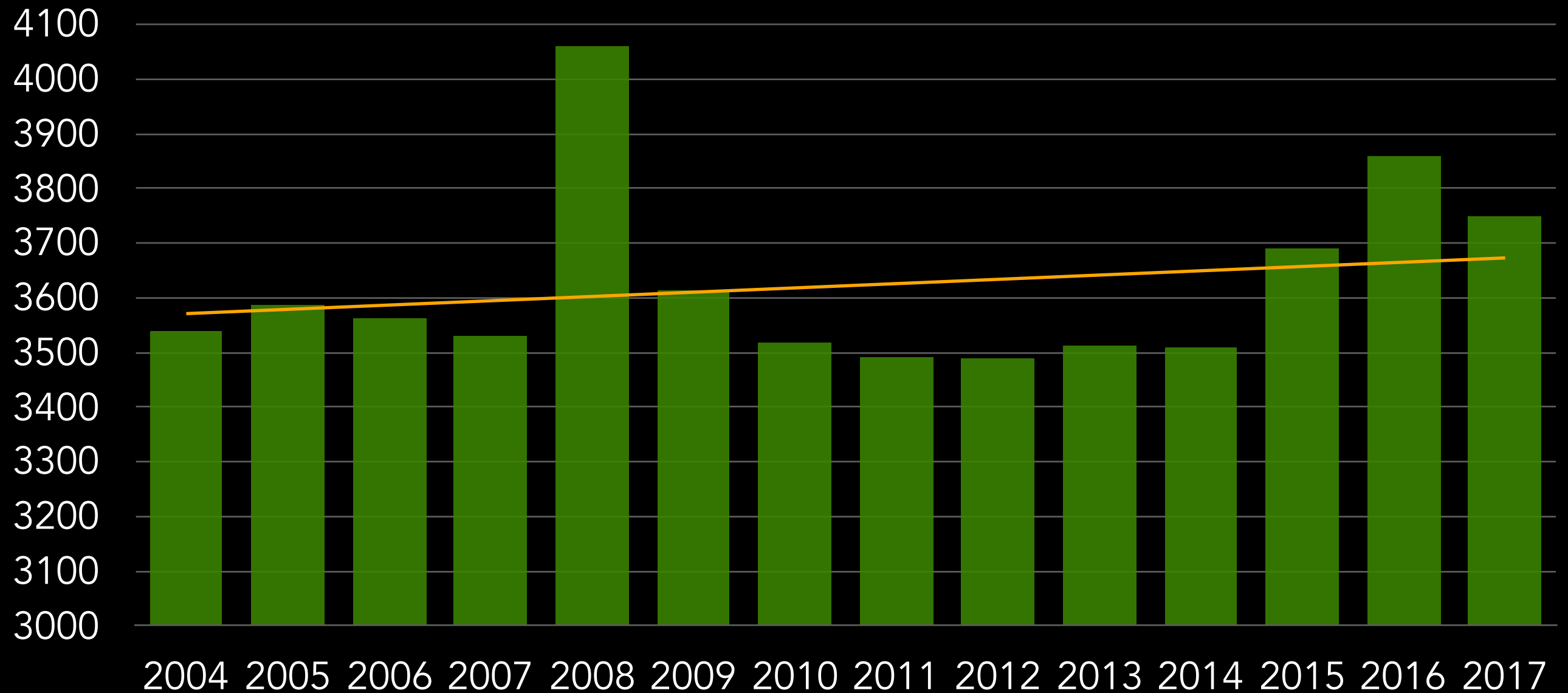
Meadow - 23

A.J. - 19

BUT WHAT IF...

- Can a member of a team who did not place first, second or third at district but who advanced with the team then places first, second or third as an individual at region advance as an individual?
- Yes.

THE NUMBERS: DISTRICT



THE NUMBERS: REGION & STATE

Region participation in 2016 — 1,080
(2015 — 1,088)

State participation in 2017 — 155
Odds of making it to State — 1:25
(2016 — 165)

THE NUMBERS: STATE 2017

Overall average | 28.72 (High 46)

(2016: 27.6) (2015: 32.3)

1A — 23.93 (High 35)

2A — 27.96 (High 42)

3A — 27.51 (High 40)

4A — 28.69 (High 40)

5A — 33.05 (High 46)

6A — 31.19 (High 43)

THE NUMBERS: STATE 2017

Objective score average | 31.3

(2016: 27.6) (2015: 32.3)

High | 40 (n=1)

39 (n=1)

38 (n=1)

Low | 13

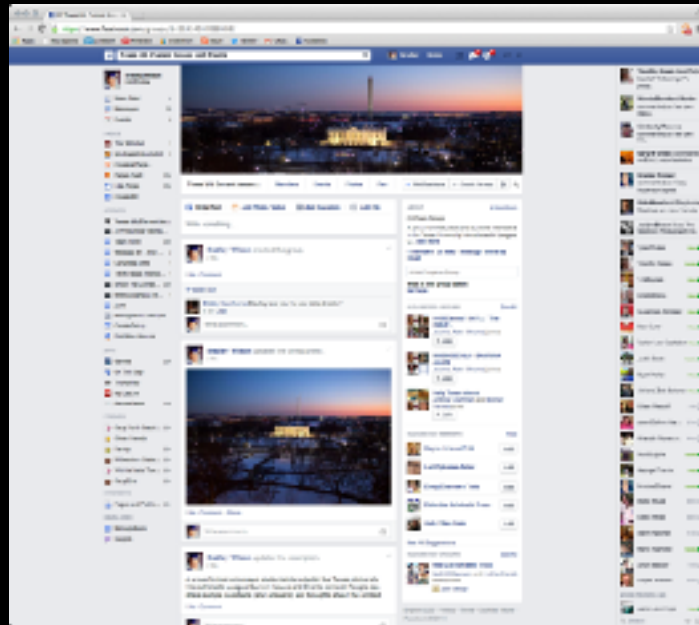
Essay score average | 5.2

(2016: 4.7) (2015: 5.6)

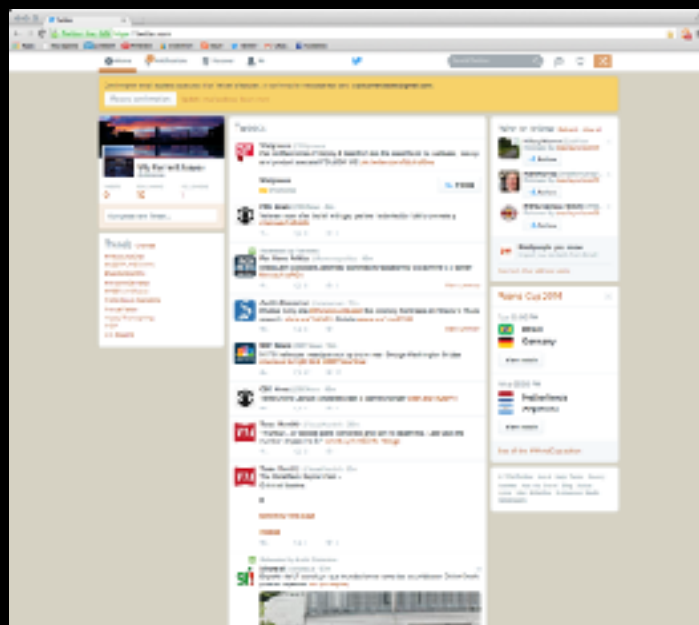
High | 10 (n=1)

Low | 1

FOLLOW CI&E



Texas UIL Current
Issues and Events



@uilciande
#uilciande

Roy Rodriguez @MrRod4Edu · 11h
@uiltexas 2015 5A Current Issues Champion
Consolidated HS with @uilciande #uilstate2015



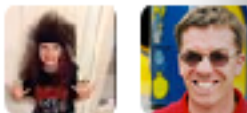
The
@ui

RET
1

10:3

RETWEETS
5

★ Nancy J
14h: Wh
& coach
pic.twitter



Jack-Jack on Twitter:
Twitter, Inc. [US]

18



@bradley

RETWEETS
FAVORITES



RETWEETS
3
FAVORITES
7

10:10 AM - 26 May 2015

Joshua Burcham on Twitter X

Twitter, Inc. [US] https://twitter.com/Birdistheword41/status/60321657164163...

Search T Q

Joshua Burcham @Birdistheword41

Follow

@bradleywilson09 is the coolest Current events director ever! #currentevents

RETWEETS 4 FAVORITES 7

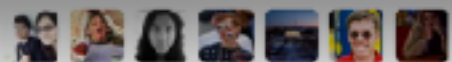
10:10 AM - 26 May 2015

Reply to @Birdistheword41 @bradleywilson09

Trends

FIFA #Origin #QueensSpeech Priyanka Gandhi #HumpDay #5WordWeddingToast
Memorial Day Willie Walsh #houwx San Miguel

© 2015 Twitter About Help Ads info



SPORTSMANSHIP

**Chad Smith**
@MrAwesome109



Not only are we champions but we also just set a record for score! @uilciande State champs! Obed -3rd Sam-4th



RETWEETS
14

LIKES
30



1:27 PM - 25 May 2016

**14****30**





@chelseaareli · May 25
@MrAwesome109 @uilciande congrats to a great team!!! :))

**1****2**

**Sprint****5:44 PM**

**Tweet**

**Rodrigo Estrada**
@RodrigoEstJr

#UIL Academics Regional Meet domination! UIL Current Events 📄
Team 🏆 UIL Science 🧪 Top
Score 🏆 UIL Social Studies 📖
Champ 🏆 & Team 🥈
#StateBound 🎉 @UILTexas



Tweet your reply

SPORTSMANSHIP



Rachael Cummings
@rcummings513

Follow

Tioga's Current Issues and Events won the 1A Texas State Championship! @uilciande



LIKE

1



9:07 PM - 21 Apr 2017



Amy Hodge
@amyhodge77

Follow

Way to go, Andrew! You worked hard for this 1st place! On to Region! #UILTexas @a_Plebeian01 @uilciande



LIKES

4



SPORTSMANSHIP



Moy Campos

April 25

After studying everyday I thought I was ready for regionals.... But apparently learning about everything that goes on around the world including wars, politics, immigration, social problems, etc. is not important. What's important is Twitter's updates, Downtown Abby, and American Idol. All of these overshadow important news. Thank you for making Current Issues and Events into Mainstream Events and Pop Culture. #ThanksBradley



NATIONAL NEWSPAPERS AND THEIR ASSOCIATED WEBSITES AND SOCIAL MEDIA



- USA Today
- Wall Street Journal
- Christian Science Monitor
- The New York Times
- The Washington Post

TEXAS METROPOLITAN NEWSPAPERS



- Dallas Morning News
- Houston Chronicle
- San Antonio Express News
- Fort Worth Star Telegram
- Austin American-Statesman

NEWS MAGAZINES



- Time
- Newsweek
- Texas Monthly
- US News & World Report
- The Economist

RADIO, TELEVISION, INTERNET



- Texas Tribune
- National Public Radio
- PBS
- The Daily Show
- ABC, CBS, NBC
- CNN.com, MSNBC.com, foxnews.com
- huffingtonpost.com

CUT-OFF DATES 2017-2018

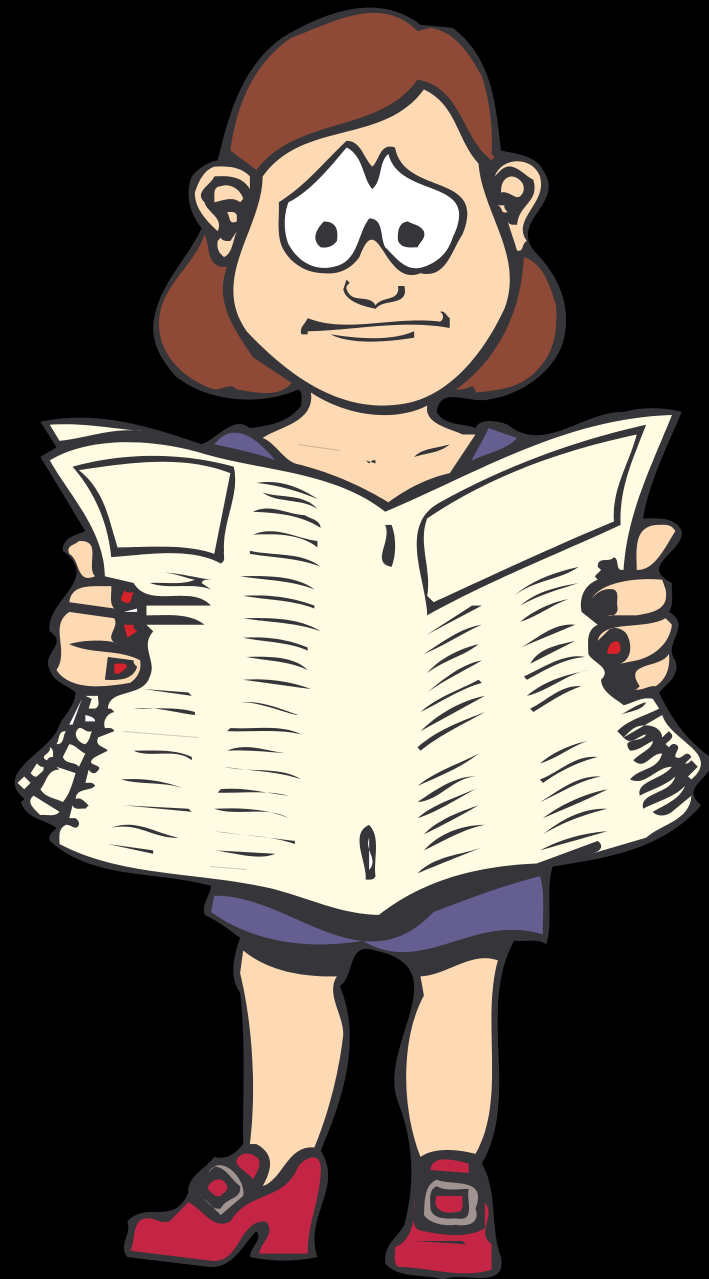
The contest will focus on a basic knowledge of current state, national and world events and issues. "Current events" are defined as those that have occurred during the current school year so **any material after Aug. 21, 2017 is fair game for any exam**. However, the following cut-off dates may assist in studying for multiple-choice questions.

- Invitational — Aug. 21 - ?
- District — Aug. 21 - Feb. 16
- Region — Sept. 25 - March 25
- State — Oct. 22 - April 22

CONTEST DATES 2017-2018

- Invitational A — Jan. 5 - Feb. 3
- Invitational B — Feb. 9 - March 10
- District — March 19-24
- Region — April 13-14
- State — May 3-5

GET STARTED NOW



- Organize your team
- Read *CI&E Contest Manual*
- Engage in social media
- Collect and store data
- Practice regularly
- Attend an invitational meet
- Practice writing and evaluating essays
- Have fun

CONTACT ME



BRADLEY WILSON, PH.D.
bradleywilson08@gmail.com
@bradleywilson09

QUESTIONS?