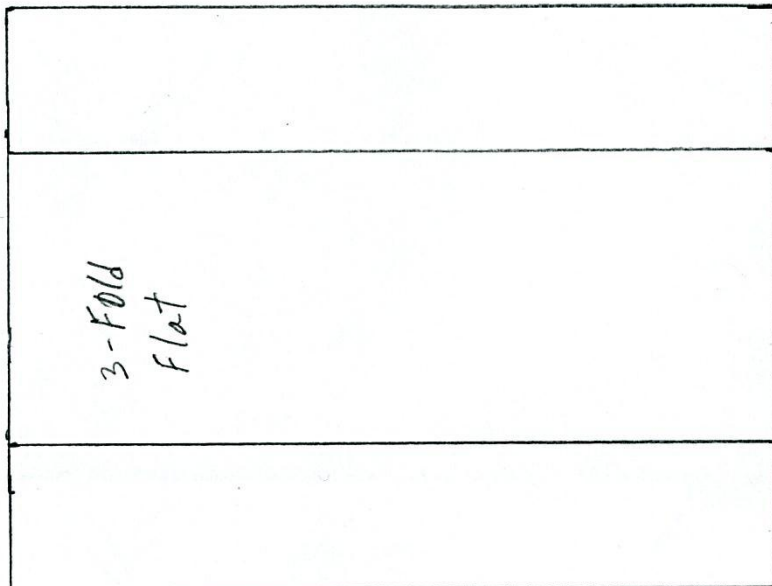
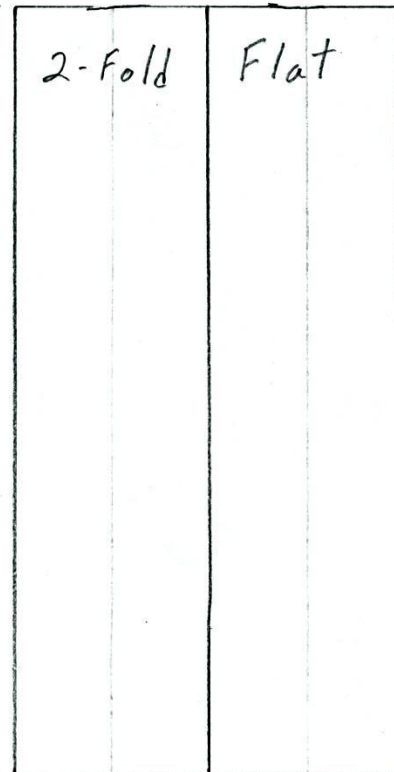
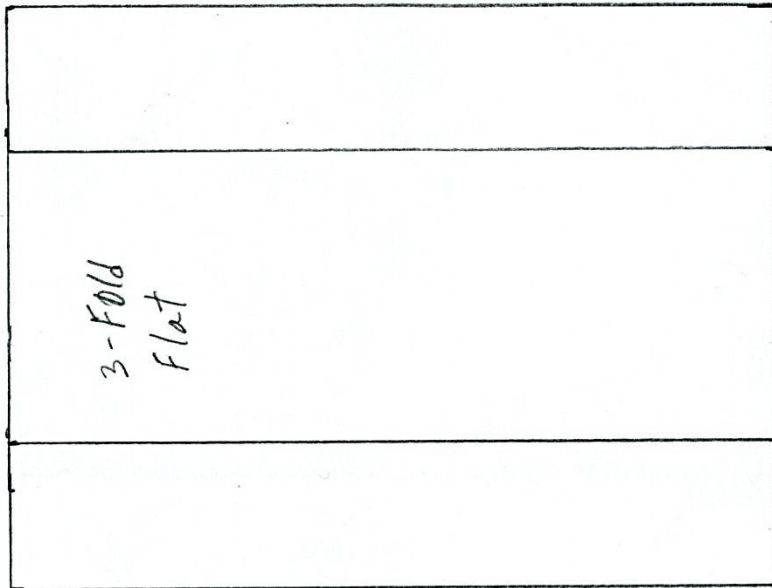
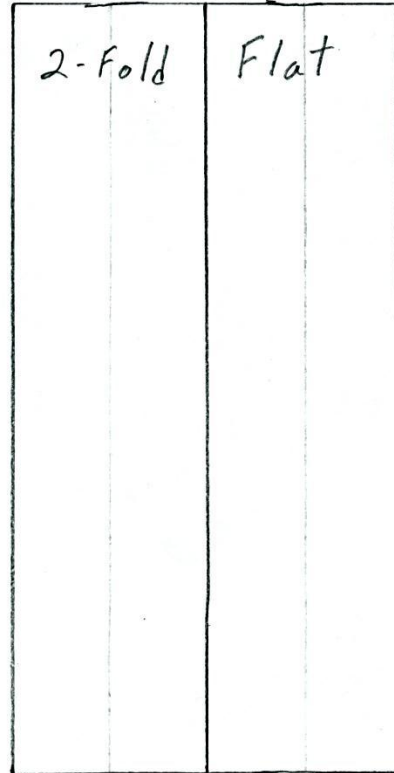
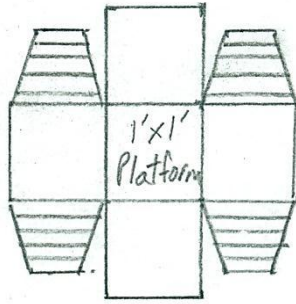
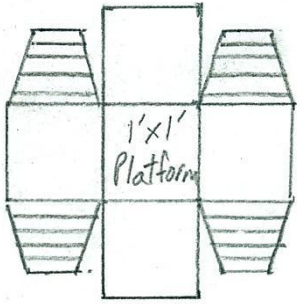
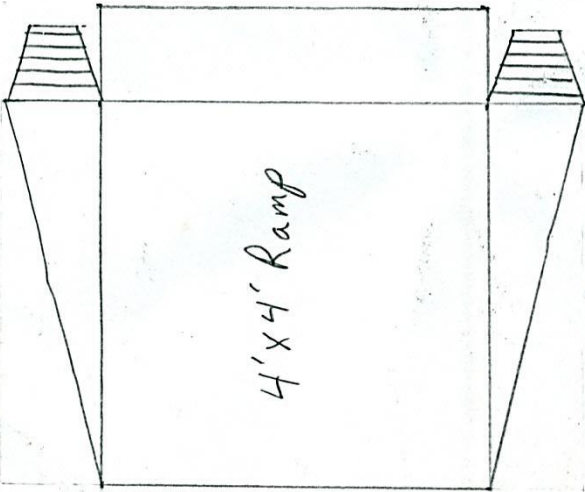
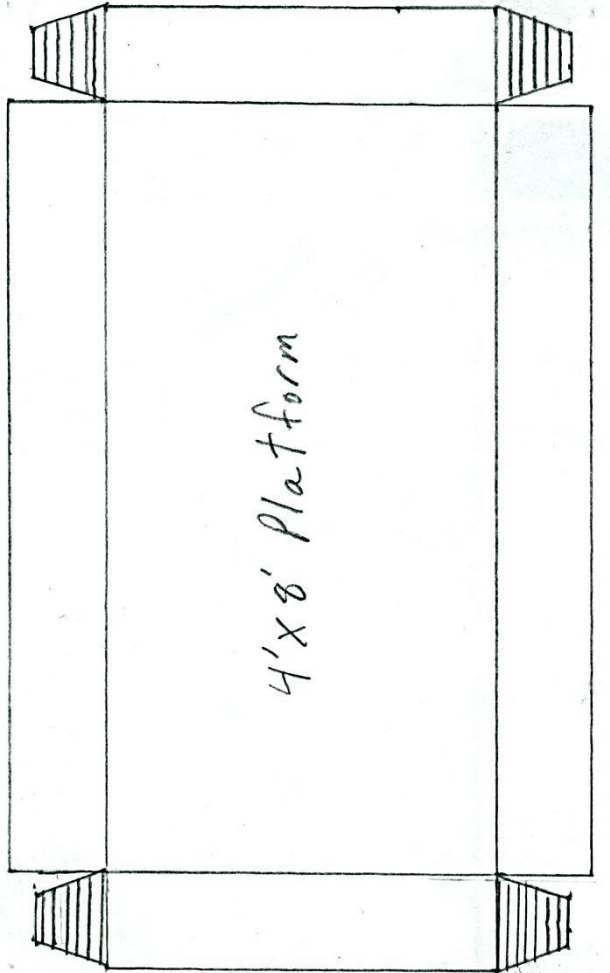
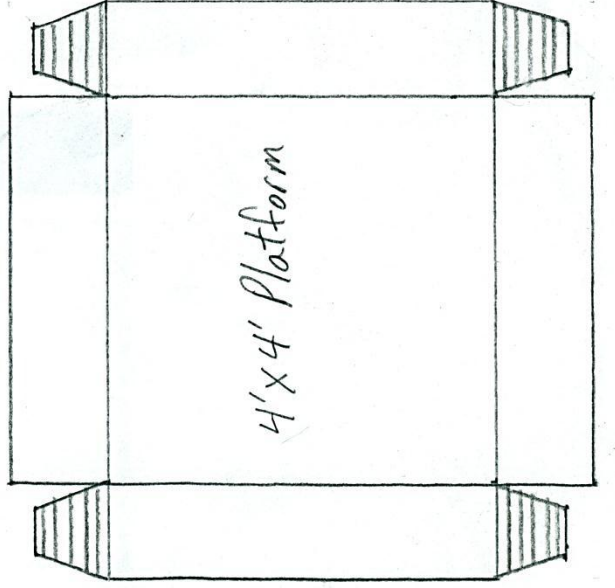
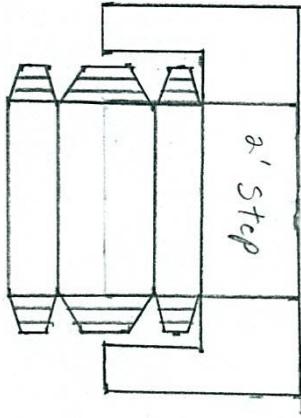
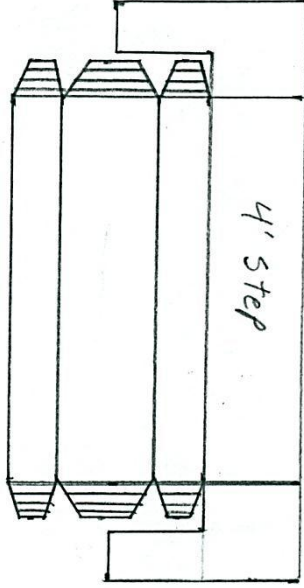
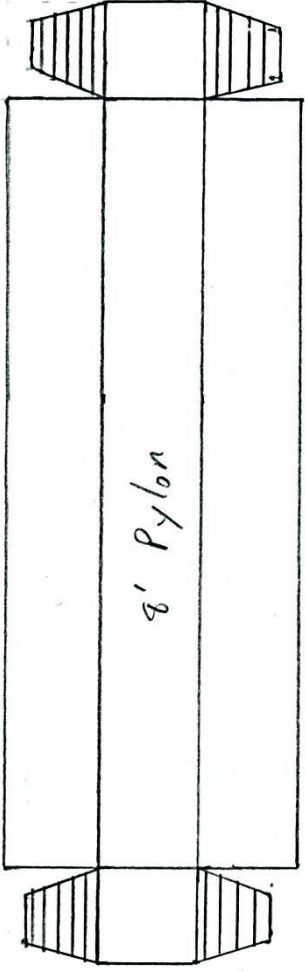
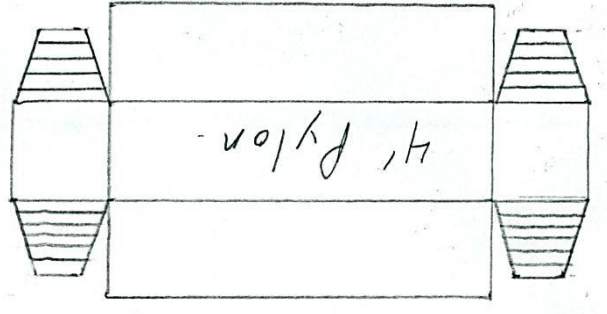
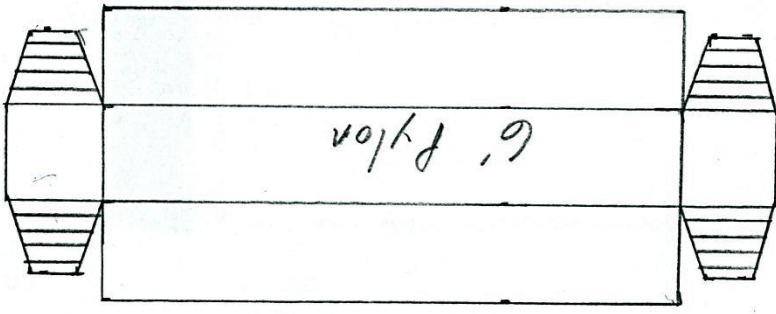


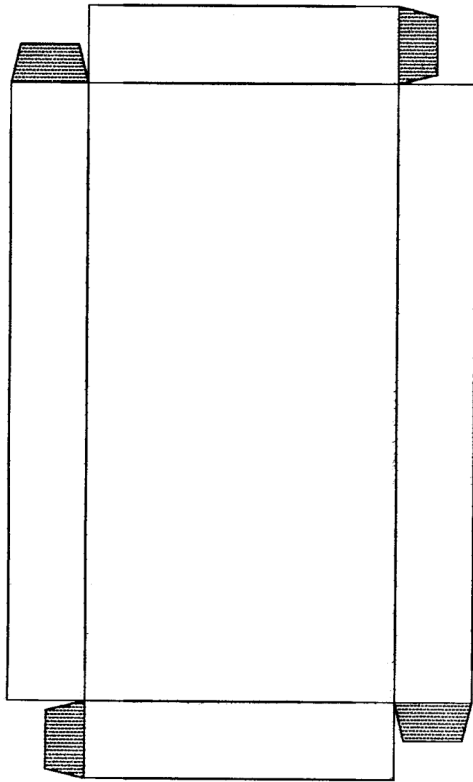
UIL UNIT SET MODEL

(Design by Lonnie Royal)

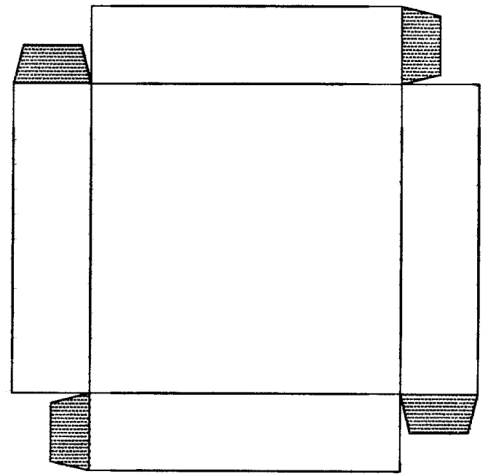
Make two copies of each page on heavy card stock for each student. Cut out the pieces and fold along the lines. Glue the tabs inside each piece. $\frac{1}{2}$ inch equals approximately 1 foot. This will give you a $\frac{1}{2}$ inch scale model of the UIL unit set.







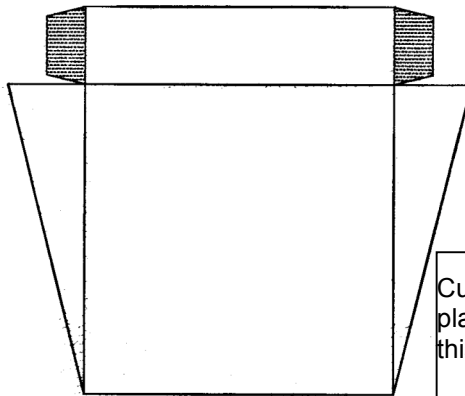
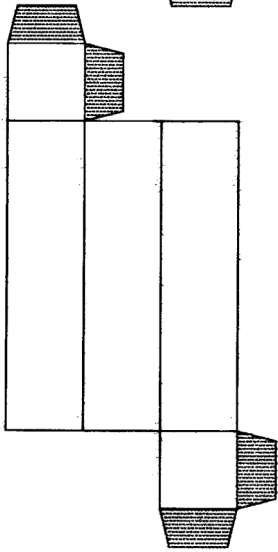
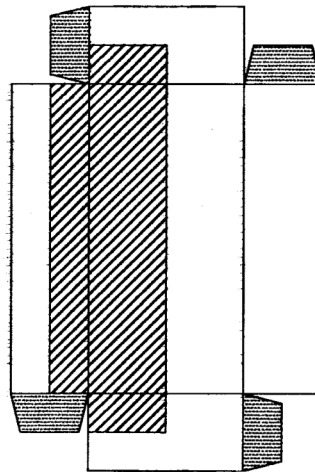
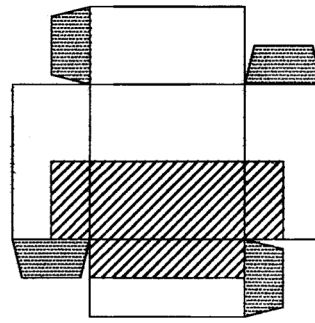
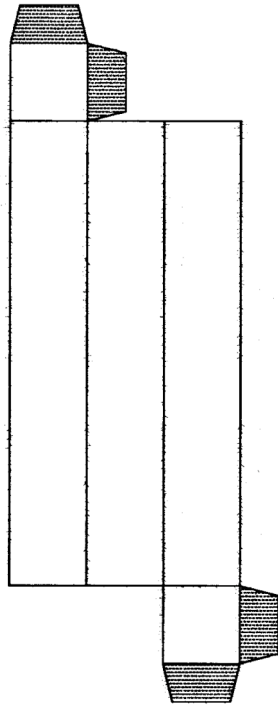
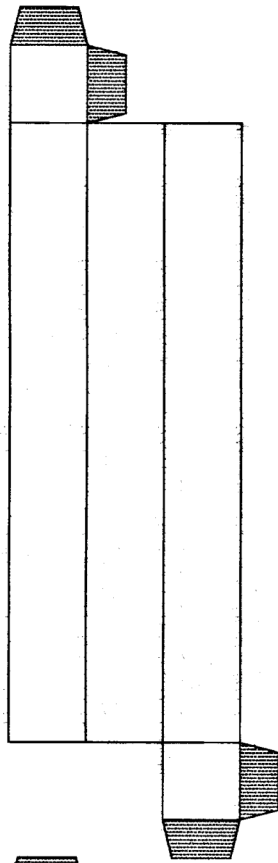
Cut two platforms



Cut two platforms

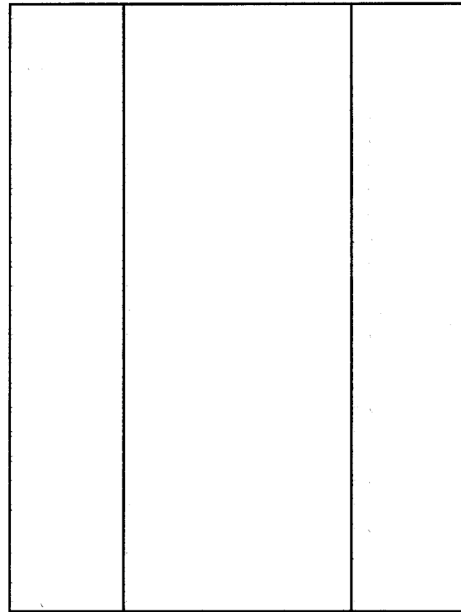
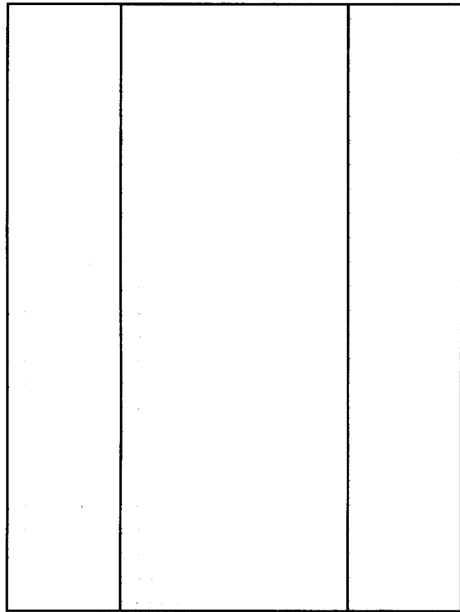
Photocopy on card stock, cut, fold and glue on shaded tabs to create 1/2" scale model of unit set elements as listed on p. 96 of the Handbook for One-Act Play 12th ed.

Page One of Three U.I.L.
Unit Set Elements

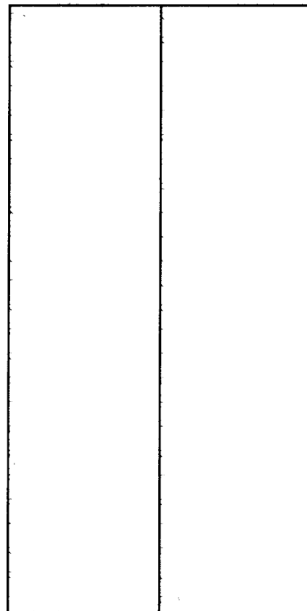
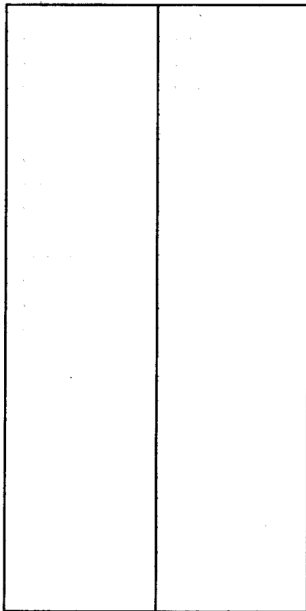


Cut two of all pylon, ramp, platform and step units on this page.

Page Two of Three U.I.L. Unit Set Elements



Cut four three-fold flat units



Cut four two-fold flat units

Page Three of Three U.I.L.
Unit Set Elements