

The background features a large, light blue, semi-transparent logo of the letters 'U', 'I', and 'L' in a stylized font. A large, light red, semi-transparent five-pointed star is positioned behind the 'I' and 'L' characters. The text 'Rule Changes 2016-17' is centered over the logo.

Rule Changes 2016-17

UIL Theatre Events

2016-17 Calendar



- August 10 – Bi-District Contest Info Form Due
- August 15 – November 1 – Planning Meetings
- October 1 – Deadline to Enroll
- November 2 – February 1 – Dates to contact panelists 2 and 3
- December 14 – Script and Set approval Deadline

- Mach Forms Will be Used to Submit Requests for Script and/or Scenic Items.
- You fill out and copy.
- You mail in the receipt with the material.
- Responses will be returned via e-mail. Materials will follow.

Scenic Items or Properties Requiring Approval Request 2016-17
Requests will be considered between August 1, 2016 and December 14, 2016. Print a copy of your receipt and send with the payment.

Payment Information
A \$30 evaluation fee payable to "UT-Austin-UJL"
The evaluation will not be completed until the payment is received.

Your Name *
First Last
School *

Address *
Street Address Address Line 2
City State / Province / Region
Postal / Zip Code Country

Phone *
 - -
####

Administrator's Email *

Email *

Date Submitted *
MM / DD / YYYY

Play Information and Justification
Play Title *

Playwright *

Status of Title *
 On the Approved List Pending Approval

A written justification for the addition. Include relevant pages. *

Upload pdf drawings here.

For scenic items: On 8-1/2" x 11" paper:
A scale drawing of the complete ground plan of the proposed set.
A scale drawing of each proposed addition to the basic set.
A full description of all materials to be used in construction of each proposed addition to the basic set.

For restricted properties: On 8-1/2" x 11" paper:
A full description of each proposed item.

Upload a File *
Select Files

Draw your signature into the box below. *

[Clear](#)

If the signature box does not work, type in your name in this box. *

Your Title *
 Director Principal Superintendent

2016-17 Calendar Continued

February 1

- Deadline to organize your district's One-Act Play Contest.
- Deadline to set up One-Act Play Meets in the Spring Meet Entry System.
- Title Registration and Contestant Entry Opens
- Deadline for executing judging contracts.
- Deadline for Contest Managers to certify online. This must be done annually.

February 23 - Deadline to enter titles

10 Calendar Days Prior to First Contest

- Deadline for Contestant Entry, play and set
- information and additional directors to be entered via the UIL Spring Meet Entry System without DEC approval.
(System opens 2/1) Deadline for submitting the Contestant Entry Form for Zone or District contests.

March 25– Deadline for District and Bi-District Online certification of results.

2016-17 Calendar

- **10 Calendar Days Prior to First Contest—**

1. Deadline for Contestant Entry, play and set
2. information and additional directors to be entered via the UIL Spring Meet Entry System without DEC approval. (System opens 2/1) Deadline for submitting the Contestant Entry Form for Zone or District contests.

- **March 25— Deadline for District and Bi-District Online certification of results.**

- **March 31, April 1, 3 and 4 - Area Meets**

- **April 5-8 Regional Meets**

- **State Meet –All at AISD PAC**

- 1A – April 20, 2A – April 21, 3A – April 22 (Thursday – Saturday)
- 4A – April 24, 5A – April 25, 6A – April 26 (Monday – Wednesday)
- Staff - April 27 - Sleep

Student Teachers

- **Student teachers** may volunteer to assist in directing the one-act play during the semester they are assigned to a participant school while fulfilling their student teaching requirements. **They may be listed as directors on the eligibility notice and program but they do not count against the allotment of directors.** Schools shall not pay student teachers for assisting.

Directors

- Language in C&CR and Handbook - Directors in the high school One-Act Play Contest shall be full-time employees of the school districts the plays represent.
- Awaiting approval by the UIL Academic Committee of the Legislative Council to increase or not restrict the number. Changes, if any, will be published in The Leaguer.

NEW TEACHERS

- **Professional Acknowledgment Form**

The UIL **requires** that all One-Act Play directors sign the Professional Acknowledgment Form at the beginning of their tenure in that position.

Advancing and Awards

- **Advancing and Awards**
- Three unranked plays advance from each zone, district, bi-district and area contest.
- Two unranked plays advance from each region contest.
- **Plays are ranked first (champion) through sixth at the State Meet.**
- Individual acting awards are given to the:
 - Best Actor
 - Best Actress
 - 8 All-Star Cast members. **(No Formula)**
 - 8 Honorable-Mention All-Star Cast members. **(No Formula)**
 - Awards recognizing technicians or crew may be given at the discretion of the Contest Manager and are strongly encouraged by the League. No other acting awards may be given.

Advancing and Awards - Points

THEATRE

One-Act Play

Ranked Plays from:

District

Region

State

Individual Awards – All Levels

NO CAPS

Theatrical Design*

Individual

Group

Film*

ADV

20

20

1st

20

10

15

20

20

ADV

20

20

2nd

16

8

12

16

16

ADV

20

15

3rd

12

6

10

12

12

ALT

15

4th

10

8

10

10

5th

8

6

8

8

6th

6

4

6

6

State Theatre Championship

	1 st	2 nd
NEW - Theatre Team Points*	10	5

A combination of OAP, Theatrical Design and Film points at State

Theatrical Design and Film points are awarded only at state.

10 points will be awarded to the school that finishes with the most overall points and five points will be awarded to the school that finishes with the second highest number of points in the three theatre contests for state only.

Time Limits

Time Allowed	
7 Minutes	Setup and Strike
1 Minute	Time to Start Performance
40 Minutes	Performance Time

Music Time Limit has been eliminated.

Time Limits - Warnings

- No play shall run less than 18 minutes or exceed 40 minutes of performance time.
 - You shall receive a warning **when 15 minutes have elapsed** and when 35 minutes have elapsed.
 - You will be asked to confirm. No other warnings are given.

Zones

- **The League strongly discourages zones with four or less schools and the use of panel judging in those contests.**

Contestant Entry



1. Entries are made in the Spring Meet System for your first contest.
2. If needed changes are made in the SMS for region and State.
3. **Contestant Entry Forms are submitted at every level.**

1A Only – Using 8th Graders as Substitutes

- **Exception for 1A Only:** Students in Grade 8 from middle or junior high schools feeding into a 1A high school may participate in One-Act Play at the high school level when the play would be withdrawn from competition due to lack of student interest or eligibility.
 - **Procedures for Using 8th Graders in 1A**
 - The substitution shall be requested by the administrator at the end of the grading period prior to the contest.
 - The "8th grade to High School Substitution Form" ([Link](#)) found under "Resources and Forms" shall be sent to the appropriate Executive Committee Chair for approval by the majority of that committee. (Zone - Bi-District to the District Executive Committee (DEC) and Area-State to the State Executive Committee (SEC).)
 - If approved, the director shall provide a copy of the DEC or SEC decision to the Contest Manager at each contest.
 - The 8th Grader does not have to relinquish their spot in the company if the ineligible student at the time of the substitution becomes eligible.

Clinics – A Responsibility

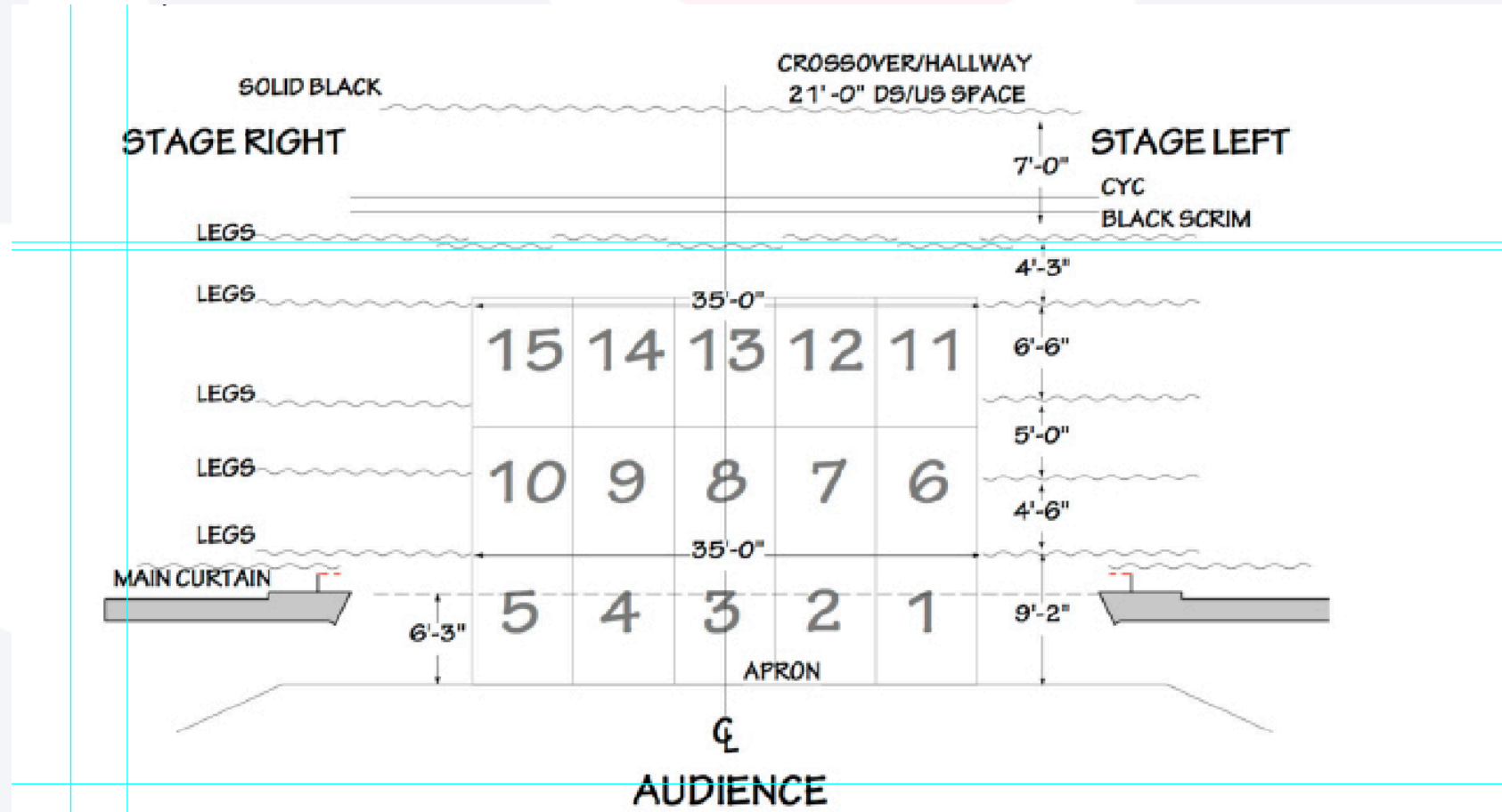
A host school who has not executed the conflict form and allows a critic to see a play they may be judging **shall be in violation of the ethics code. The participating school **and clinician shall** also be in violation of the appropriate ethics code.**

Casting Issues

A male may play a female role and a female may play a male role as long as they play the part as the gender that the playwright intended.

Publisher permission may be required. Please consult with them.

Lighting at the Contest Site



Numbering order to be used at all sites.

Use of Unit Set on Apron

Nothing shall be done with the unit set that may damage it or endanger the site crew, audience or participants. **The use of unit set in front of the curtain line or on the apron is restricted to a 6' combined height. No item, if it falls, should be able to fall into the house. If questionable, the Contest Manager's decision is final.**

Unit Set may be used DS of curtain or apron.

SET RULE CHANGES

4X8 Platforms standing on the 4' end are not permissible.

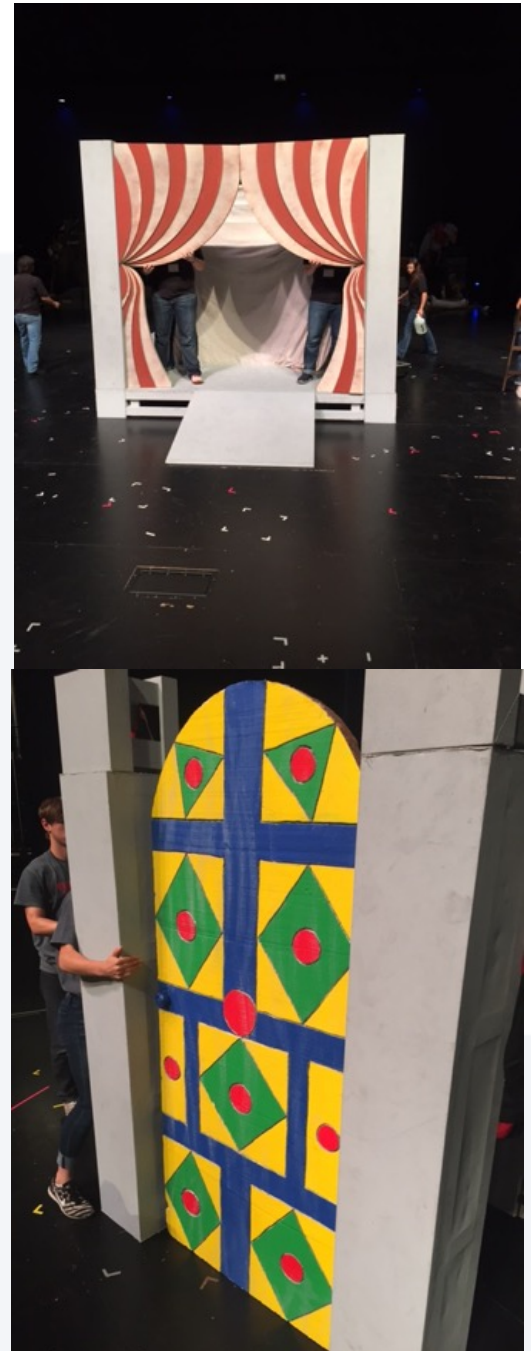
SET RULE CHANGES

- a) A lightweight flat medium-gray header be temporarily attached to the top of the door frames using standard store-bought devices. The combined door and header shall not exceed a total elevation of 8'. Details for the construction of these flat headers can be found in the "Handbook Supplements" link on the UIL website. (Resources and Forms)
- b) A lightweight decorative header, like a capital, may be temporarily attached to door and window frames using standard store-bought devices or using the standard flat header found in the Unit Set drawings. The combined door and header shall not exceed a total elevation of **8' 6"**, 8" in thickness and shall not exceed more than 6" from the side edges of the door or window unit.

SET RULE CHANGES

Special Doors, Entrances and Windows

Two special 4' wide X 8' tall lightweight, non-metallic and non-wooden doors, entryways or windows (i.e. softgood or foam) **supported by or suspended between** unit set elements using standard "store-bought" devices may be used. They may be hinged. **They may be used as two consecutive pieces. (side by side)**



SET RULE CHANGES

Lighting and Projectors

They may be used **downstage** of the house curtain/proscenium line but must be hand-held, placed on the floor or on **a light stand that does not exceed 4' in height**. They may be masked with small boxes or other properties. (i.e. made to look like footlights, placed in or on standard properties, etc.)

RESTRICTION ON TRANSITION TYPES IS REMOVED

SET RULE CHANGES

Softgoods

- It is permissible to use up to 160 square feet of **unframed** soft goods or projection material in any way you choose but under the following size limitations:
- The material shall be easily transported and stored. It may be rolled on a tube(s) or batten not to exceed 12' in length or may be folded into a 4X4 square,
8X10 restriction is removed

SET RULE CHANGES

Ladders

- Actors may stand on them. **Participants shall not stand or sit on the top rung of the ladders.** This applies to ladders of any height. Follow all safety notifications placed on the ladders at the time of purchase.

SET RULE CHANGES

Flame

Candles or other open-flame devices **are not allowed** at any site. Electrified candles, lamps, lanterns, flicker lights, fire effects and torches are permissible.

SET RULE CHANGES

Diameter added – Also applies to wells

Not allowed at State

Commercial Signs

PROPERTIES ALLOWED WITH SIZE OR QUANTITY RESTRICTIONS

Item	Description	Maximum Size	Additional Notes
Bookcases/ shelves	Furniture	6' high x 4' wide	
Dollies or Hand Trucks	Utility Item or Prop	Limit of 2	May only be used for set/ strike. If used as a prop, it must be script-driven.
Fireplace units	Furniture	4' high x 6' wide X 3' deep.	Includes the mantel
Fountains	Exterior Decorative Prop- erty	5' high x 4' wide and 4' deep.	A circular fountain would be 5' high x 4' in diame- ter. It fits on top of a 4X4 Platform.
Glitter/Sand/ Powder, etc.	Not allowed at the State Meet facility.		Must be cleaned in the 7-minute strike. It is not allowed at State.
Hand-held Doors/ Jail Bars	Hand-held Property	6' tall x 4' wide	Other Special Doors are discussed elsewhere.
Knives & Swords	Weapon	All laws apply.	Must be approved by Contest Manager for use.
Logs	Property	6' long x 18" high X 2' deep	
Prop Storage Boxes	Utility Item or Prop		May only be used for set/ strike. If used as a prop, it must be script-driven.
Rocks	Property	2' wide x 18" high x 3' long	Lightweight
Sound Carts/ speakers	Utility Item or Prop		May only be rolled in off- stage areas. If used as a prop, it must be script- driven.
Statues and Plant/ Decora- tive Stands	Decorative Trim	5' high	
Street Signs, Commercial Signs and Lamp Posts	Property	8' high x 3' wide	This includes stands

Integrity Script

The Integrity Script is a complete published playscript which specifically and clearly reflects the performance at that level of competition:

- a) The exact portions of the total script to be used.
(Highlighted in Yellow)
- b) Deletion of all dialogue and business not to be used. Make it clear that you are cutting but light enough that a reader can look at the material that has been eliminated. (Strike-through)
- c) Any adaptations approved by the League and/or the publisher shall also be indicated.

Music Rules

10 minute rule is eliminated

30 second rule is eliminated

- You and your school will make sure you are copyright compliant
- Your administrator will certify that you are
- You will provide the League officials with an accurate and signed music log.



Changes for Contest Managers

2016-17

Contest Manager Certification



- New People must take the complete management test
- Recerts will take the Recertification Modules
- Deadline is February 1

Panel Judging Critic Selection

- Requested by TTAO Membership
- Judges will do the draw after results are determined.
- Each judge will get one advancing school
- At region the “Acting Judge” will get the alternate critique and the other two will draw for the two advancing plays.
- Two “hats” are prepared.
 - One with the three advancing shows
 - One with the non-advancing shows (These are distributed evenly amongst the three)



Theatrical Design

2016-17

INTO THE WOODS

Music and Lyrics by Stephen Sondheim
Book by James Lapine



2017 UIL Theatrical Design Contest
Prompt Available August 2016

New Contest Director

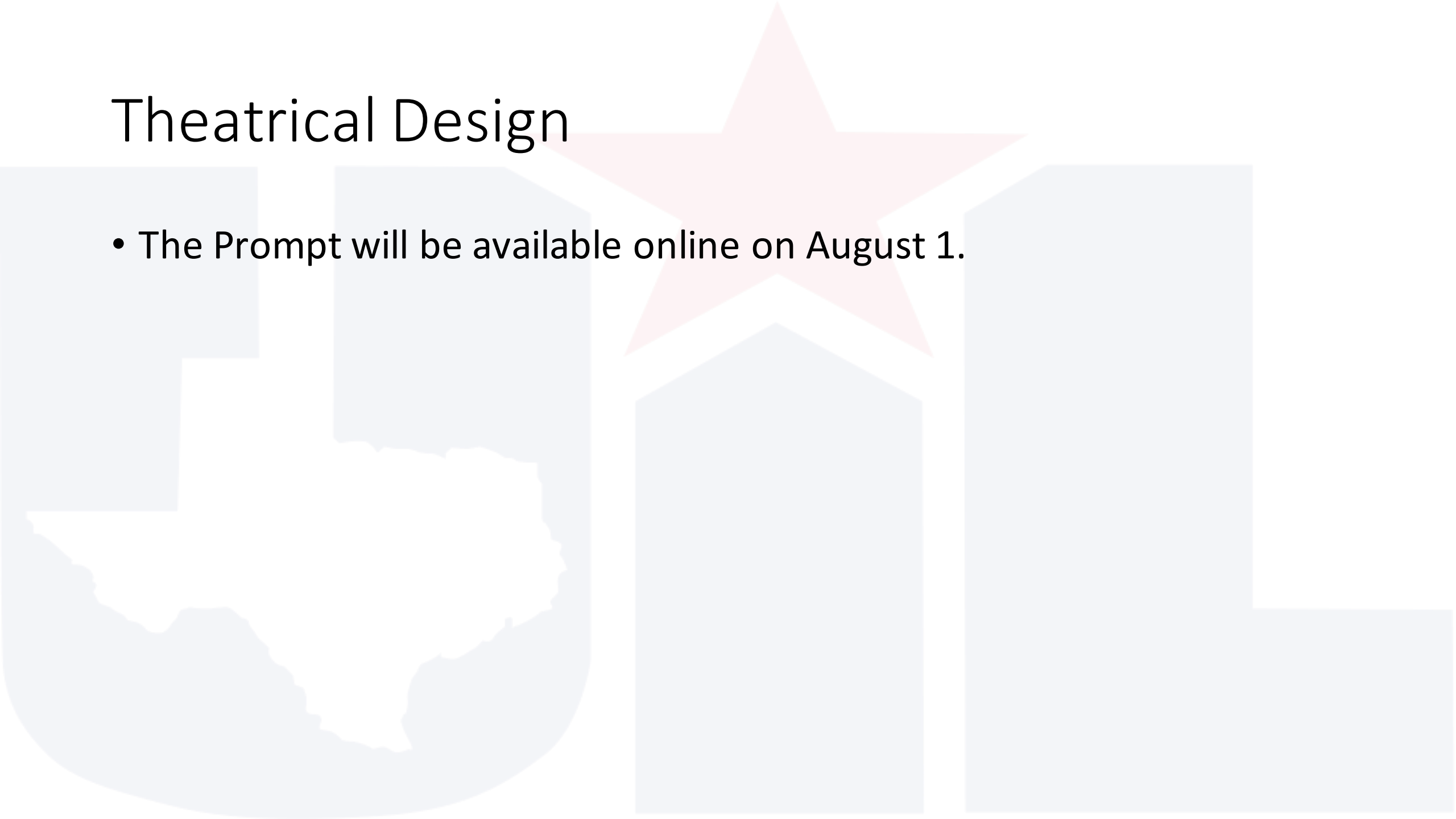


Rachael Gomez - Retired

Formerly at McAllen High School, PSJA Memorial High School,
Westlake High School and Austin Bowie High School

Theatrical Design

- The Prompt will be available online on August 1.





The UIL Young Filmmakers Festival

2016-17

UIL Young Filmmakers Festival

IT'S OFFICIAL!



UIL Young Filmmakers Festival

Rules and Calendar to be posted pending a booking at the venue.

Tentative deadline:
January 11, 2017.

**BREAK
A LEG!**

