

# UIL Theatrical Design

## 2017-18 State Medalists



# a raisin in the sun

by lorraine hansberry



# clybourne park

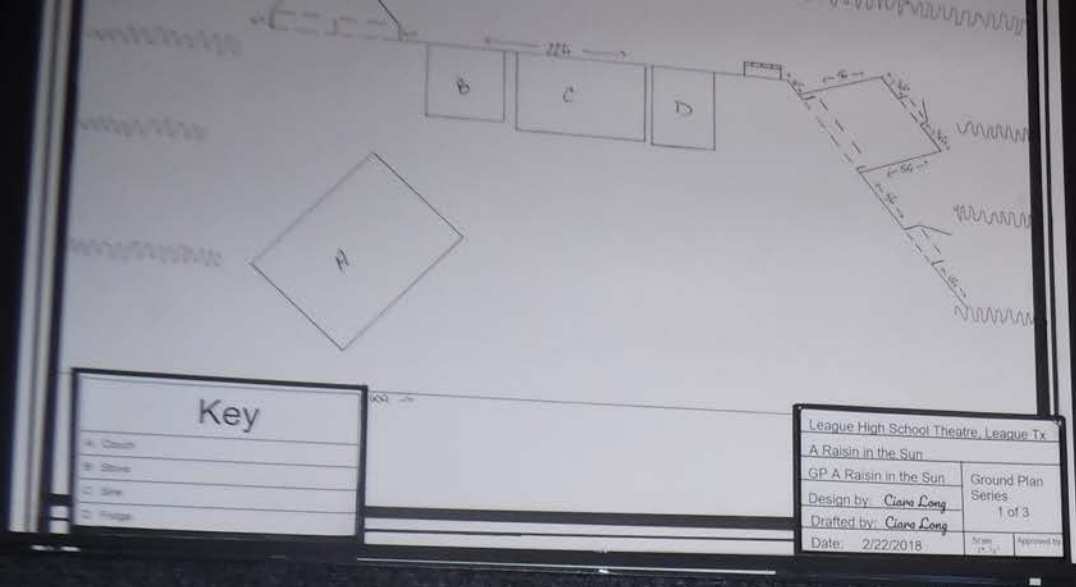
by bruce norris

an exercise in repertory design



UIL Theatrical Design 2018  
Prompt Release Capital Conference 2017

In *Clybourne Park*, specific edits will be recommended prior to release



Key	
A	Clutch
B	Stove
C	Desk
D	Tray

League High School Theatre, League Tx.  
 A Raisin in the Sun  
 GP A Raisin in the Sun  
 Design by: Ciara Long  
 Drafted by: Ciara Long  
 Date: 2/22/2018

Ground Plan Series	1 of 3
Scale	1/4" = 1'
Approved by	

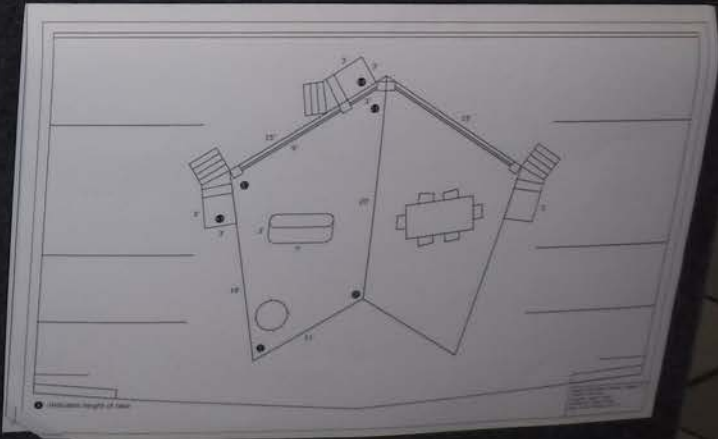


**PGA WIN**  
 Ciara Long-Cozine  
 Stratford High School  
 Class of 2018  
 State Champion

RAISIN IN THE SUN  
 and CLYBOURNE PARK  
 Set Design Concept  
 Justification  
 CIARA LONG-COZINE

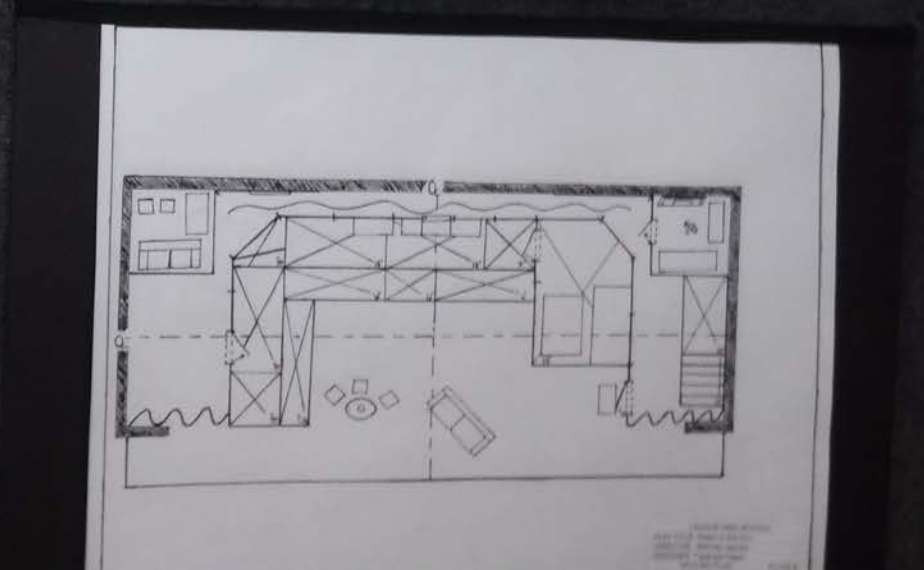


# Division I Set Design





A RAIN IN THE SUN  
 AND CLYBOURNE PARK  
 Set Design / Concept  
 Illustrations  
 TAPANGA FAGAN



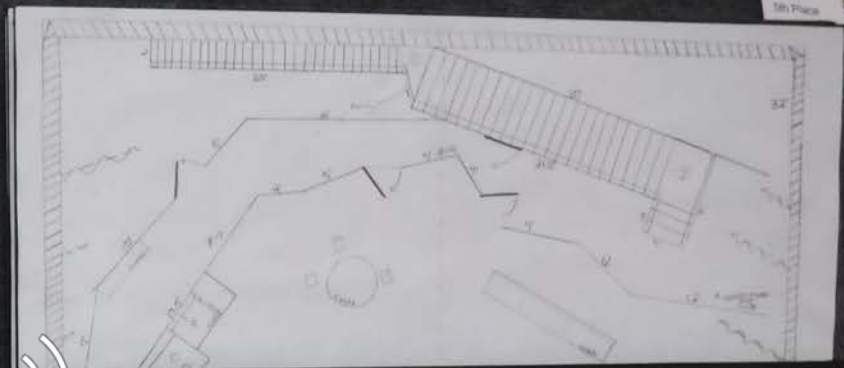


Flip for more pages





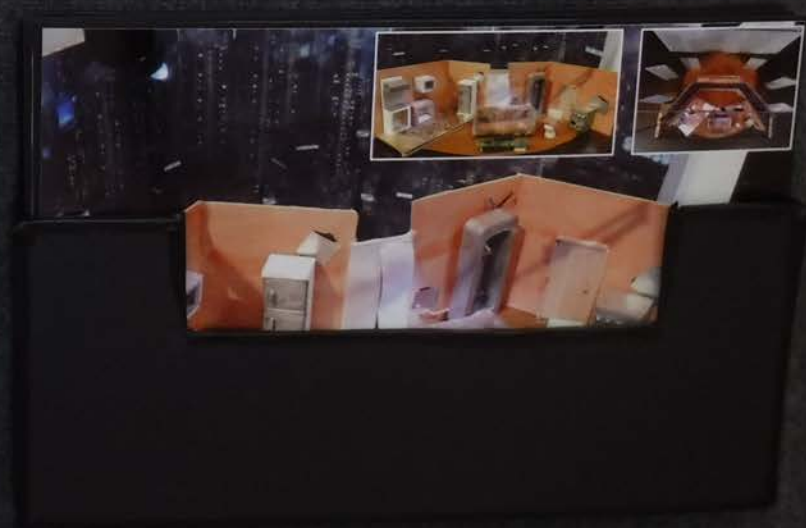
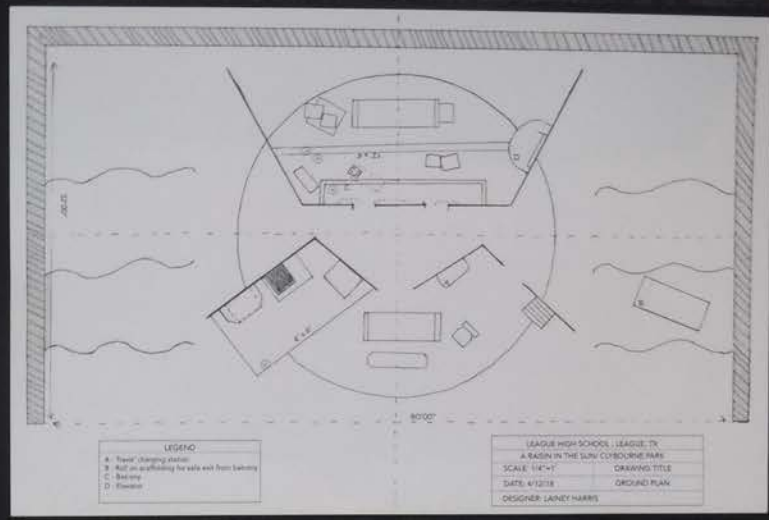
**PDA**  
**USA**  
**Krystalynn Buesing**  
Graduate High School  
Member of Set Design  
5th Place



A RAISIN IN THE SUN and GLYBOURNE PARK  
Set Design Concept  
Justification  
KRYSTALYNN BUESING







# Division II Set Design



# inspiration BOARD



A ROOM IN THE SUN  
AND CLYBOURNE PARK  
Scene Design Concept  
Justification  
MELODY LUNA



Artist	Melody Luna
Class	...
Teacher	...
Project Name	...
Due Date	...
Score	...

Jacob Castillo  
HSPVA  
Division 1 Set Design  
2nd Place



A RAISIN IN THE SUN

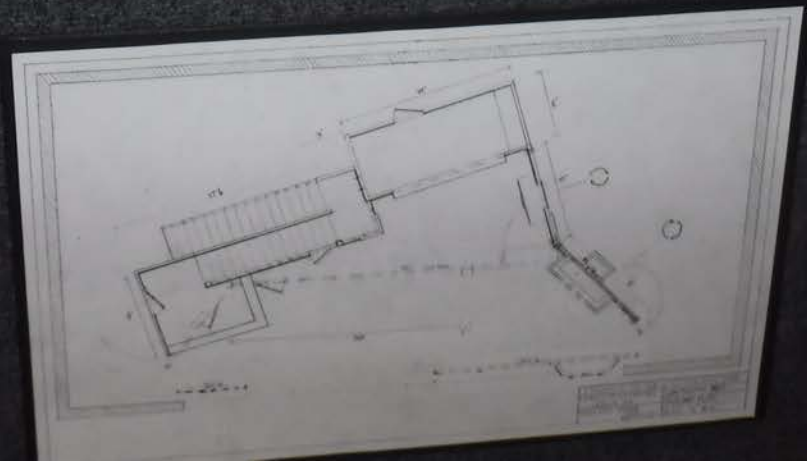


CLYBOURNE PARK ACT 1



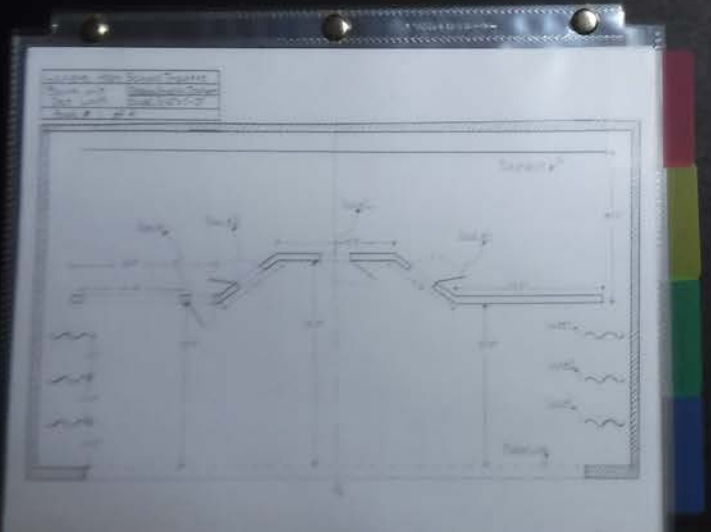
CLYBOURNE PARK ACT 2

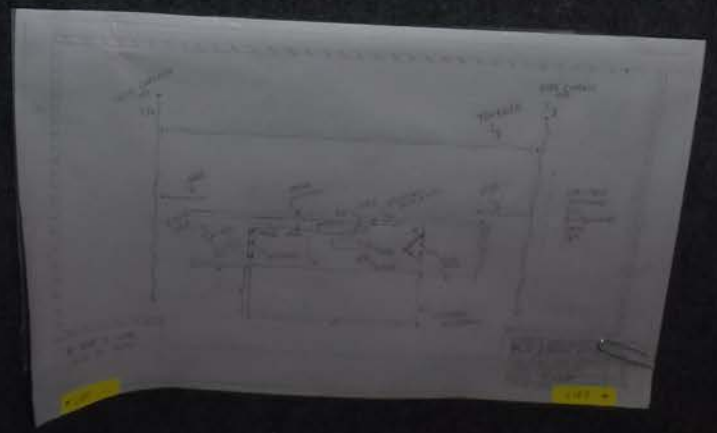
RAISIN IN THE SUN  
and CLYBOURNE PARK  
Set Design Concept  
Justification  
JACOB CASTILLO

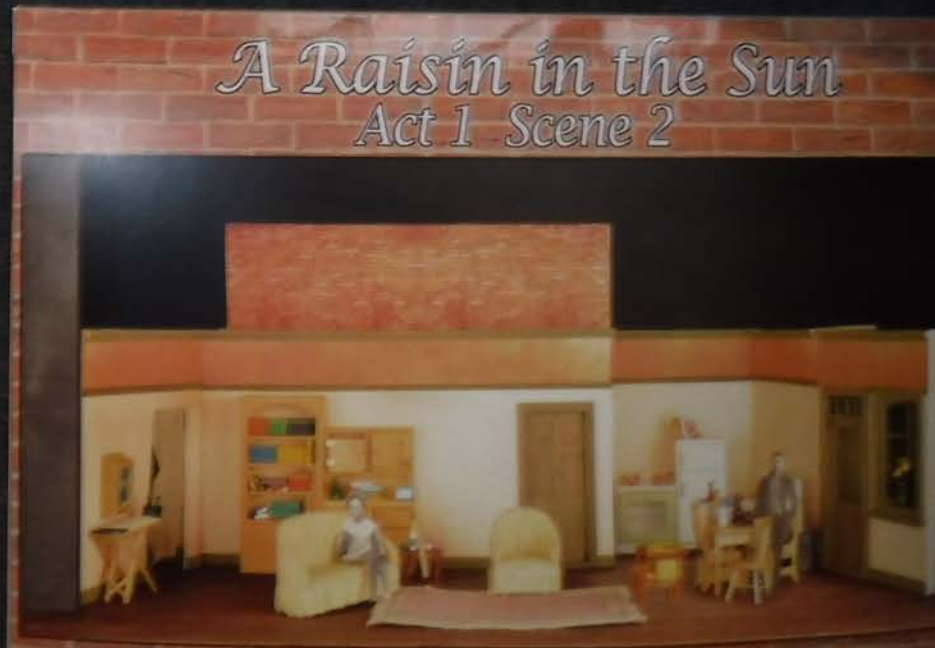
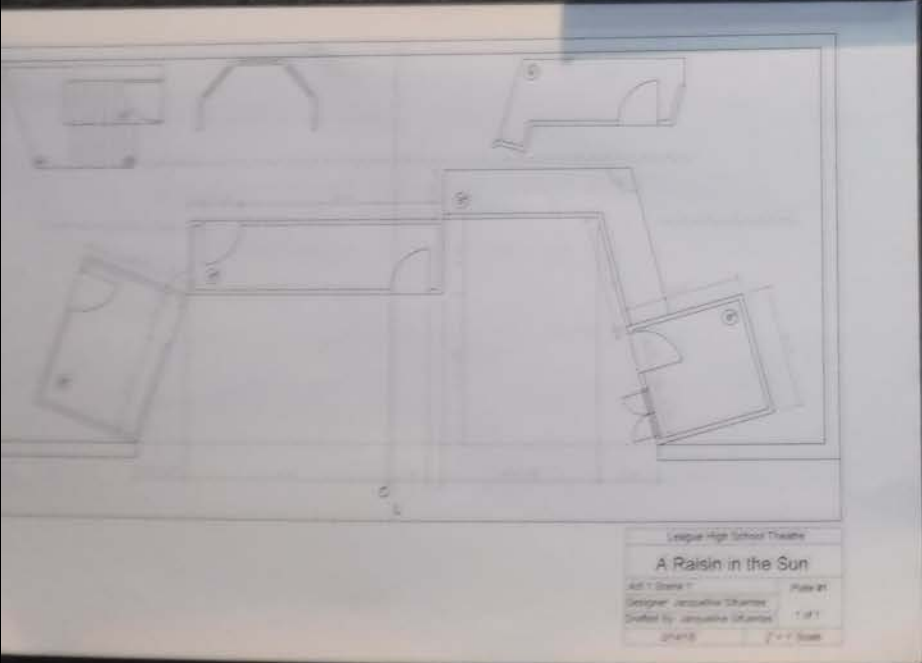




A RAISIN IN THE SUN  
and  
CLYBOURNE PARK  
Set Design Concept  
Justification  
AMELIA JOCHEM









Ashley Peikert  
Friendship High School  
Division II Set Design



5th Place



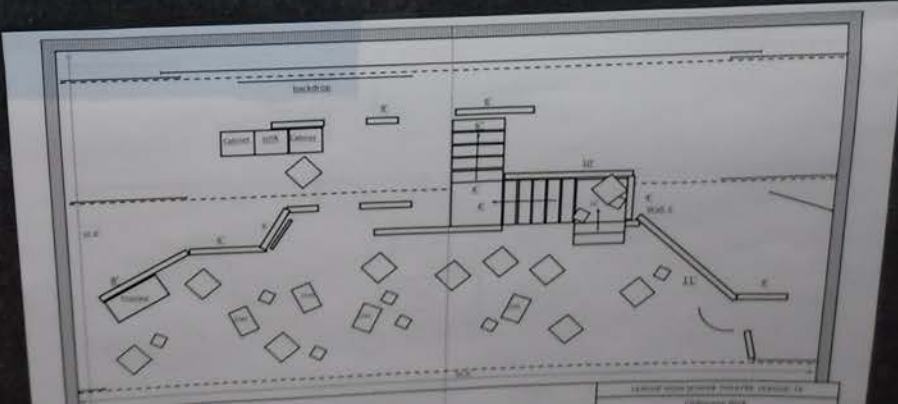
Inspiration Board  
A Raisin in the Sun &  
Clybourne Park  
Individual Set Design  
Ashley Peikert



A Raisin in the Sun  
White Paper Model  
Individual Set Design  
Ashley Peikert



A Raisin in the Sun & Clybourne Park  
Individual Set Design  
Concept Justification  
Ashley Peikert





# Division I Marketing Design

Sierra Wells  
 Executive Director



A RAISIN IN THE SUN  
 AND CLYBOURNE PARK  
 Supporting George Costanza  
 Auditions  
 SIERRA WELLS

LEAGUE HIGH SCHOOL THEATRE PRESENTS  
**A RAISIN IN THE SUN**  
 BY LORRAINE HANSBERRY  
 FIRST PRODUCTION IN REPERTORY  
 MAY 3RD & 5TH 7 P.M. STUDENTS \$6 ADULTS \$10  
 LEAGUE HS THEATRE WWW.LEAGUEHS THEATRE.COM

LEAGUE HIGH SCHOOL THEATRE PRESENTS  
**CLYBOURNE PARK**  
 BY BRUCE NORRIS  
 SECOND PRODUCTION IN REPERTORY  
 MAY 4TH & 6TH 7 P.M. STUDENTS \$6 ADULTS \$10  
 LEAGUE HS THEATRE 522-876-5533

League High School Presents:

**A RAISIN IN THE SUN**  
 BY LORRAINE HANSBERRY

**CLYBOURNE PARK**  
 BY BRUCE NORRIS

**HALF PRICE SAVE**  
 FOR THE CUSTOMER COUPON

"Harlem"  
 Longston Hughes

COMMUNITY VOLUNTEERS PAY IT FORWARD AND SHARE THEIR SECRETS ON HOW TO OVERCOME OBSTACLES AND REACH YOUR DREAMS

ATTENDEES GET HALF PRICE COUPON FOR A RAISIN IN THE SUN & CLYBOURNE PARK

**Dreams**

LEAGUE HIGH SCHOOL THEATRE COMPANY SPONSORS

## INSPIRATION DAY

YOUR DREAM CAN COME TRUE

**RAISING UP THE FUTURE**

COMMUNITY VOLUNTEERS PAY IT FORWARD AND SHARE THEIR SECRETS ON HOW TO OVERCOME OBSTACLES AND REACH YOUR DREAMS

ATTENDEES GET HALF PRICE COUPON FOR A RAISIN IN THE SUN & CLYBOURNE PARK

FOR MORE INFORMATION

#LHSITHEATRE  
 @LEAGUHS  
 @LEAGUEHS

**APRIL 28, 2018**  
 LHS AUDITORIUM

8:30 A.M. OPENING CAST OF A RAISIN IN THE SUN & CLYBOURNE PARK

9 A.M. KEYNOTE DR. HO LEE MY STORY & TESTIMONIES

11 A.M. INTEREST GROUPS: CAREER CONNECTIONS

12 P.M. LUNCH

SPONSORED BY THE CHAMBER OF COMMERCE

1 P.M. NOTABLE ALUMNI SPEAKERS

2 P.M. Q&A WITH COMMUNITY LEADERS

2:45 P.M. CLOSING

FOR MORE INFORMATION CALL 522-876-5533

### MARKETING CALENDAR

	Sun	Mon	Tue	Wed	Thu	Fri	Sat
MARCH							
APRIL							

  
 Heather Johnson  
 Class High School  
 Division 1 Marketing Design  
 2nd Place

Specialty Event

**GRAND OPENING**  
 MARCH 17, 2018 @ 8AM  
 LOCATED AT 1234 GRAPE AVE  
 COMMUNITY GARDEN  
 BYO SEEDS AND SHOVELS



**MAMA'S GARDEN**  
 FOSTERED TO CREATE A HEALTHIER COMMUNITY BY THE CAST AND CREW OF A RAISIN IN THE SUN  
 BY LORRAINE HASKERT  
 CLYBOURNE PARK  
 BY BRUCE NORRIS  
 FOR MORE INFORMATION CALL (555) 867-5309

LEAGUE HIGH SCHOOL PRESENTS  
 CLYBOURNE PARK  
 BY BRUCE NORRIS  
 LEAGUE HIGH SCHOOL AUDITORIUM  
 MAY 4 AND 6 @ 7PM  
 ADMISSION: \$10  
 (555) 867-5309



APRIL	1	2	3	4	5	6	7	8	9	10	11	12	13	14	15	16	17	18	19	20	21	22	23	24	25	26	27	28	29	30	
MAY	1	2	3	4	5	6	7	8	9	10	11	12	13	14	15	16	17	18	19	20	21	22	23	24	25	26	27	28	29	30	31

Showbill

A Raisin in the Sun  
 Community Garden

P	u	b	l	i	c	i	t
C	a	l	e	n	d	a	r



mead  
 A RAISIN IN THE SUN  
 COMMUNITY GARDEN  
 (555) 867-5309

2017-2018  
Calendar

Clybourne Park & A Raisin In The Sun

League High School Auditorium

Questions, comments, concerns?  
@LHSDClybourneRaisin  
LeagueHighSchoolClybourneRaisin.com  
LeagueHighSchoolPlays@gmail.com

Adults: \$10  
Student: \$5

League High School  
presents

**Clybourne Park**  
written by Bruce Norris

**A Raisin In The Sun**  
written by Lorraine Hansberry

May 3 7pm   May 4 7pm   May 5 7pm   May 6 7pm

League High School Auditorium

Questions, comments, concerns?  
@LHSDClybourneRaisin  
LeagueHighSchoolClybourneRaisin.com  
LeagueHighSchoolPlays@gmail.com

Adults: \$10  
Student: \$5

League High School  
presents

**FREE KEYCHAIN NIGHT**

Friday  
May 5th  
7 pm

**Clybourne Park &**  
Written by Bruce Norris

**A Raisin In The Sun**  
Written by Lorraine Hansberry

League High School Auditorium

Questions, comments, concerns?  
@LHSDClybourneRaisin  
LeagueHighSchoolClybourneRaisin.com  
LeagueHighSchoolPlays@gmail.com

Adults: \$10  
Student: \$5

US  
Taylor Moon  
3rd Place

League High School  
presents

**Clybourne Park**  
written by Bruce Norris

**A Raisin In The Sun**  
written by Lorraine Hansberry

League High School Auditorium

Questions, comments, concerns?  
@LHSDClybourneRaisin  
LeagueHighSchoolClybourneRaisin.com  
LeagueHighSchoolPlays@gmail.com

Adults: \$10  
Student: \$5

Clybourne Park / A Raisin In The Sun

**CLYBOURNE PARK**

**A Raisin In The Sun**

Office Depot

A RAISIN IN THE SUN AND CLYBOURNE PARK

MEMBER THIS SEASON CONCERT CLASSIFICATION

OFFICE DEPOT

Office Depot

A RAISIN IN THE SUN AND CLYBOURNE PARK

MEMBER THIS SEASON CONCERT CLASSIFICATION

OFFICE DEPOT

THE LEAGUE HIGH SCHOOL THEATRE  
DEPARTMENT INVITES YOU TO

# A Black Tie Reception

BENEFITING HABITAT FOR HUMANITY



LEAGUE HIGH SCHOOL CAFETERIA  
MAY 2ND, 7PM  
\$25 PER PERSON

*Dinner, Dancing,  
and Silent Auction*


## Marketing Calendar

<b>SEPTEMBER</b>	<b>MARCH</b>
-SHOW REVEAL	-INTERVIEW DIRECTOR AND LEADS FOR SCHOOL NEWSPAPER
-MEET WITH HISTORY TEACHERS	-SAVE THE DATE ON SOCIAL MEDIA
<b>OCTOBER</b>	<b>APRIL</b>
-TRUCK ON TREATING HOMELESSNESS PARADE	-POSTERS ARGUING TOWN NEWSPAPER AD
<b>DECEMBER</b>	-OLDSWEET CONTEST
-CHRISTMAS PARADE	-DELIVER BOOKMARKS TO LIBRARIES IN THE DISTRICT
<b>FEBRUARY</b>	-ADVERTISE ON ALL SCHOOLS MARQUE
-LOCAL MAGAZINE ARTICLE	-LOCAL RADIO INTERVIEW
-VALENTINE'S DAY CANDY SIDEWAY	-VIDEO CLIPS ON SCHOOL ANNOUNCEMENTS
	<b>MAY</b>
	-POST PRIZE TO SOCIAL MEDIA



# A RAISIN IN THE SUN

MAY 3RD AND 4TH, 7PM



\$10 FOR ADULTS LEAGUE HIGH SCHOOL \$7 FOR STUDENTS

## CLYBOURNE PARK

MAY 5TH AND 6TH, 7PM

## INSPIRATION Board






A RAISIN IN THE SUN  
and CLYBOURNE PARK

Marketing Design Event  
Sponsorship

LAUREN GAJDICA

RAISIN IN THE SUN

RAISIN IN THE SUN



Lauren Gajdica  
Marketing Design Event  
Sponsorship

4th Place



League High School  
League High School  
League High School  
League High School



www.LeagueHighSchool/tickets.com

*A Raisin in the Sun*  
by Bruce Norris

League High School Theatre presents

May 3rd-6th  
6:00pm

**CLYBOURNE PARK**  
by Bruce Norris

League High School Theatre  
3456 League City Texas

Tickets \$6

EVENT



My professional dream will be a special evening of LHS student performed drama and LHS alumni guest speakers.

The LHS Film Club has agreed to create small documentaries of LHS from exploring moments during the 1950s, 1970s, 1990s, and currently at League High School.

Then LHS alumni from those time periods will speak and we will have a question and answer period from those in attendance.

Lately, the cast of our upcoming production will serve as the speakers for the current look at diversity at LHS. They will be able to discuss the industry working and their productions that have their share of diversity at LHS.

We will offer complimentary popcorn and jump during intermission and sell tickets for our performance as a fundraiser.

I will advertise throughout League High School and League City. I will suggest to LHS History and English teachers that they offer extra credit for attending the live events. I also think regarding the work of the LHS Film Club will show us being and friends of LHS students to the event. By having it in the theater, our audience will see the set for our show and through the discussions, have a chance to attend our production.

With tickets being on sale at a discount at this event, our audience will want to take advantage of the savings and buy that night.

Welcome to Diversity through the Cavalier

SAISON IN THE SUN  
AND CLYBOURNE PARK  
Marketing Design Concepts  
Liaison  
CHRYLINA SHERRWOOD

Student Film Festival  
Saturday, May 6th  
Find us on Facebook!

Strongloves

March 2018						
Sunday	Monday	Tuesday	Wednesday	Thursday	Friday	Saturday
	1	2	3	4	5	6
7	8	9	10	11	12	13
14	15	16	17	18	19	20
21	22	23	24	25	26	27
28	29	30	31			

April 2018						
Sunday	Monday	Tuesday	Wednesday	Thursday	Friday	Saturday
	1	2	3	4	5	6
7	8	9	10	11	12	13
14	15	16	17	18	19	20
21	22	23	24	25	26	27
28	29	30				

May 2018						
Sunday	Monday	Tuesday	Wednesday	Thursday	Friday	Saturday
	1	2	3	4	5	6
7	8	9	10	11	12	13
14	15	16	17	18	19	20
21	22	23	24	25	26	27
28	29	30	31			

# Division II Marketing Design



FUNDRAISER FLIER



FUNDRAISER POST CARD



RAISIN IN THE SUN  
and CLYBOURNE PARK  
Marketing Design Concept  
Justification  
TAL WAG



EVENT CALENDAR



# 2018 MARKETING CALENDAR

A RAISIN IN THE SUN  
CLYBOURNE PARK

MARCH	1	2	3	4	5	6	7	8	9	10	11	12	13	14	15	16	17	18	19	20	21	22	23	24	25	26	27	28	29	30	31	

23: Poster Release  
26-27: Filming for League TV commercial  
28: Interview for Newsletter

APRIL	1	2	3	4	5	6	7	8	9	10	11	12	13	14	15	16	17	18	19	20	21	22	23	24	25	26	27	28	29	30		

4: Social Media Promotion  
6: Breakfast Advertisement released  
9: Article in school newsletter released  
11: Social Media Promotion  
13: League TV commercial airs  
18: Social Media Promotion  
21: A Raisin in the Sun  
25: Social Media Promotion  
23-27, 30: Advertisement on Morning Announcements

MAY	1	2	3	4	5	6	7	8	9	10	11	12	13	14	15	16	17	18	19	20	21	22	23	24	25	26	27	28	29	30	31	

1-2: Advertisement on Morning Announcements  
2: Social Media Promotion  
3, 5: A Raisin in the Sun Show Day  
4, 6: Clybourne Park Show Day

@leaguetheatre  
www.leaguetheatre.com

League High School Presents

LORRAINE HANSBERRY'S  
**A RAISIN IN THE SUN**

May 3rd 6pm  
May 5th 6pm

BRUCE MORRIS  
**CLYBOURNE PARK**

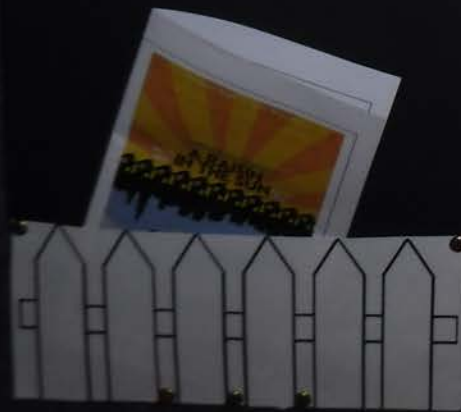
May 4th 6pm  
May 6th 6pm

LHS Auditorium  
Tickets: \$5.00 at door

A Raisin in the Sun is produced by special arrangement with Samuel French, Inc.  
Clybourne Park is produced in special arrangement with Dramatists Play Service, Inc.

McKenna Davenport  
Healy High School  
Drama & Marketing Class  
2nd Place

A RAISIN IN THE SUN  
AND CLYBOURNE PARK  
Marketing Class Project  
McKenna Davenport



Get a look inside the minds behind our upcoming spring productions, A Raisin in the Sun and Clybourne Park!

**A BREAKFAST IN THE SUN**

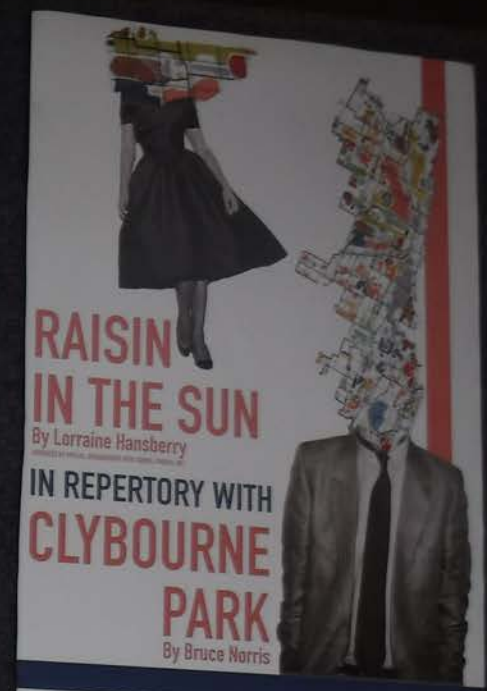
10:00 AM  
11:00 AM  
12:00 PM

a Q & A with the Cast and Directors

Come enjoy our breakfast buffet and join us upon discussion of historical topics, ranging from the role of women in history to the symbolism of scrambled eggs.



RAISIN IN THE SUN  
 THE CLYBOURNE PARK  
 Marketing Design Contest  
 WINNER  
 ELIZA PILLSBURY



A LEAGUE HIGH SCHOOL THEATRE PRODUCTION  
 MAY 3, 4, 5 7:00pm WWW.LHS.EDU



**ART AND POLITICS OF GENTRIFICATION**

**FEATURING:**  
 Jeffrey Lowe, professor of Urban Planning and Environmental Policy at Texas Southern University  
 Dr. James Douglas, President of the NAACP Houston Branch  
 Gonzo, local street art/graffiti artist based in Houston

**PRODUCTION:**  
 Date: 5/2/2018  
 Time: 5:00 PM  
 Location: The League High School Theatre  
 Tickets: \$5.00 (Suggested)

**QUESTIONS TO BE ASKED:**

1. How do you define gentrification?
2. How does it relate to gentrification in an urban area? How does it relate to the city of Houston?
3. How do you think it affects the local community? How does it affect the city of Houston?
4. How do you think it affects the local community? How does it affect the city of Houston?
5. How do you think it affects the local community? How does it affect the city of Houston?

**ART AND POLITICS OF GENTRIFICATION**

FEATURING LOCAL GRAFFITI ARTIST GONZO,  
 PRESIDENT OF NAACP HOUSTON DR. JAMES DOUGLAS  
 TSU URBAN PLANNING PROFESSOR JEFFREY LOWE

FREE ADMISSION MAY 2, 5:00 PM

**A RAISIN IN THE SUN**

1	2	3	4	5	6	7	8	9	10
11	12	13	14	15	16	17	18	19	20
21	22	23	24	25	26	27	28	29	30
31	32	33	34	35	36	37	38	39	40

**UIL**  
**UIL**  
 Jacqueline Arriaga  
 101 White High School  
 Division 1 Marketing Design  
 4th Place




LEAGUE HIGH SCHOOL PRESENTS  
**MAY**  
 3<sup>RD</sup> & 5<sup>TH</sup>  
**A RAISIN IN THE SUN**  
 BY LORRAINE HANSBERRY



**CLYBOURNE PARK**  
 BY BRUCE NORRIS

**MAY**  
 4<sup>TH</sup> & 6<sup>TH</sup>

TICKETS ARE \$10 AT THE DOOR  
 \$8 ONLINE @ LEAGUEHSTHEATRE.COM  
 LEAGUE HIGH SCHOOL - 7:00PM

 @LEAGUEHSTHEATRE



**A RAISIN IN THE SUN & CLYBOURNE PARK**  
**MARKETING CALENDAR 2018**

-MARCH-	-APRIL-	-MAY-
<ul style="list-style-type: none"> <li>1. Announce production to community</li> <li>2. Announce to school</li> <li>3. Set up website for ticket sales</li> <li>4. Post on social media</li> <li>5. Post on school website</li> <li>6. Post on school website</li> <li>7. Post on school website</li> <li>8. Post on school website</li> </ul>	<ul style="list-style-type: none"> <li>1. Post on school website</li> <li>2. Post on school website</li> <li>3. Post on school website</li> <li>4. Post on school website</li> <li>5. Post on school website</li> <li>6. Post on school website</li> <li>7. Post on school website</li> <li>8. Post on school website</li> </ul>	<ul style="list-style-type: none"> <li>1. Post on school website</li> <li>2. Post on school website</li> <li>3. Post on school website</li> <li>4. Post on school website</li> <li>5. Post on school website</li> <li>6. Post on school website</li> <li>7. Post on school website</li> <li>8. Post on school website</li> </ul>

**COLOR FIGHT**  
**4/28**  
 LOCATION: LEAGUE HIGH SCHOOL  
 TIME: 8:00 PM

PAINTS, PYES, POWERS, AND MORE!  
 BRING A WHITE SHIRT!  
 FREE PIZZA AND DRINKS!  
 ALL FOR JUST \$5!

POST A PIC OF YOURSELF COVERED IN COLOR ON TWITTER WITH THE HASHTAG #COLORLEAGUE FOR A CHANCE TO WIN TICKETS FOR A RAISIN IN THE SUN AND CLYBOURNE PARK!

**SHOW YOUR COLORS!**

THE WORLD ISN'T STRICTLY BLACK AND WHITE AND NEITHER ARE YOU! THAT'S THE MESSAGE WE'RE SPEAKING AT THE LEAGUE THEATRE DEPARTMENT WITH OUR PRODUCTIONS AT A RAISIN IN THE SUN AND CLYBOURNE PARK.

THESE TWO FANTASTIC PLAYS ABOUT RACE SHOW THE IMPORTANCE IN THE COLOR OF YOUR HEART RATHER THAN SKIN. THAT'S WHY THIS COLOR FIGHT IS DIFFERENT. ONLY THIS COLOR FIGHT IS DIFFERENT. THEY SAY DON'T JUDGE A BOOK BY ITS COVER, WE SAY DON'T JUDGE A BALLOON BY ITS COLOR!

- KAREN BAILEY DIRECTOR



PRICING

100%

**A RAISIN IN THE SUN**  
BY LORRAINE HANSEBERRY

**AND CLYBOURNE PARK** DOUBLE FEATURE

BY BRUCE NORRIS

LEAGUE HIGH SCHOOL FAC  
MAY 3, 4, 5, 6 - 7:00 TICKETS - \$5.00

TICKETS FOR PURCHASE AT THEATRE.LHS.COM OR AT THE DOOR ON PERFORMANCE NIGHTS  
SPECIAL PRESALE PROMOTION! - TICKET AND T-SHIRT FOR \$15  
MARCH 2nd - MARCH 9th

A Raisin in the Sun and Clybourne Park are both presented under a special arrangement with Dramatists Play Service, Inc.

Kate Carlin  
Keller High School  
Division of Marketing Services  
5th Place

**A DAY OF COLOR**  
APRIL 28TH, 2018  
9:00 AM - 11:00 PM

SILENT AUCTION, COLOR RUN, CELEBRITY LUNCHEON, CARNIVAL, AND MUCH MORE

SUPPORT LHS THEATRE IN THIS ONCE IN A LIFETIME EVENT!  
ALL PROCEEDS GO TO

AMERICAN FOUNDATION FOR Suicide Prevention

ALL DAY PASSES  
CHILDREN - \$10

WHERE?  
LEAGUE HIGH SCHOOL

HOW TO BUY DAY OF COLOR TICKETS!

- 1.) Go to Theatre.LHS.com
- 2.) Get tickets
- 3.) \$5.00 Color Run

DAY OF COLOR IS IN CONJUNCTION WITH LEAGUE HIGH SCHOOL THEATRE'S RAISIN IN THE SUN AND CLYBOURNE PARK ON MAY 3<sup>RD</sup>-6<sup>TH</sup>. COME OUT AND SUPPORT THE LHS THEATRE DEPARTMENT!

ALL DAY PASSES - ADULT \$15.00

**A RAISIN IN THE SUN AND A RAISIN IN THE SUN MARKETING CALENDAR February 2018**

Sunday	Monday	Tuesday	Wednesday	Thursday	Friday	Saturday
				1	2	3
	4	5	6	7	8	9
	10	11	12	13	14	15
	16	17	18	19	20	21
	22	23	24	25	26	27
	28	29	30	31		

LEAGUE HIGH SCHOOL PRESENTS  
**A RAISIN IN THE SUN**  
BY LORRAINE HANSEBERRY

**AND CLYBOURNE PARK**

**A RAISIN IN THE SUN AND CLYBOURNE PARK**  
Marketing Services Department  
KATE CARLIN

# MINIMALISM



EQUAL HOUSING OPPORTUNITY



4¢ POSTAGE LEAGUE HIGH SCHOOL PRESENTS

## A RAISIN IN THE SUN

### CLYBOURNE PARK

A RAISIN IN THE SUN  
BY LORRAINE HANSBERRY • MAY 3 AND 4, 2018  
CLYBOURNE PARK  
BY BRUCE MORRIS • MAY 5 AND 6, 2018  
ALL PERFORMANCES BEGIN AT 8 P.M.  
TICKETS \$10 AVAILABLE AT THE DOOR OR AT WWW.LEAGUEHIGH.COM  
FOR MORE INFORMATION, PLEASE PHONE 258-555-6788  
PRESENTED BY SPECIAL ARRANGEMENT WITH SAMUEL FRENCH, INC.

f t i s

4¢ POSTAGE LEAGUE HIGH SCHOOL PRESENTS

## A RAISIN IN THE SUN

### CLYBOURNE PARK

A RAISIN IN THE SUN  
BY LORRAINE HANSBERRY • MAY 3 AND 4, 2018  
CLYBOURNE PARK  
BY BRUCE MORRIS • MAY 5 AND 6, 2018

A Raisin in the Sun & Clybourne Park  
Marketing Calendar  
Spring 2018

Friday, February 9, 2018 - Planning Meeting and Director, Lead Designer: 12 Weeks L&L Lead Marketing Team

Monday, February 12, 2018 - First Draft of Design Package Submission to Artists (11 Weeks L&L Lead Marketing Team)

Monday, February 16, 2018 - Second Draft of Design (Visual Presentation and "Acquaintance" by Director 11 Weeks L&L Lead Marketing Team)

Friday, February 22, 2018 - Strategic Meeting between Artists and Director: 10 Weeks L&L Lead Marketing Team

Monday, March 5, 2018 - Presentation to Lead Actor, Designer and Director: 9 Weeks L&L Lead Marketing Team

Monday, March 26, 2018 - Meeting with Director (Director's Special Meeting) in Artists' Office (8 Weeks L&L Lead Marketing Team)

Tuesday, March 27, 2018 - The Artists' In Conversation about the Production: 8 Weeks L&L Lead Marketing Team

Monday, April 9, 2018 - Director Involvement: 6 Weeks L&L Lead Marketing Team

Wednesday, April 11, 2018 - Design Development Meeting with Director, Artists, and Artists' L&L Lead Marketing Team

Monday, April 16, 2018 - Approval of Final Presentation Materials: 5 Weeks L&L Lead Marketing Team

Monday, April 16, 2018 - Project Kick-Off Meeting (Final) in Artists' Office: 5 Weeks L&L Lead Marketing Team

Wednesday, April 18, 2018 - Artist Rehearsal (First Rehearsal): 4 Weeks L&L Lead Marketing Team

Friday, April 20, 2018 - Rehearsal (Second Rehearsal): 4 Weeks L&L Lead Marketing Team

Wednesday, May 2, 2018 - Final Rehearsal (Final Rehearsal): 4 Weeks L&L Lead Marketing Team

Wednesday, May 2, 2018 - Production Open

HELPING IS AN ART

AN EXPLORE IN THE ART OF ARCHITECTURE AND DESIGN

BY JOSEPH ESPINOZA

2018

THANK YOU TO OUR SPONSORS

STIMULART

6 P.M. - 8 P.M.

ART COLLECTOR OPEN

8 P.M. - 10 P.M.

ART COLLECTOR OPEN

8 P.M. - 10 P.M.

ART COLLECTOR OPEN

A Raisin in the Sun and Clybourne Park  
Marketing Design, Calendar  
Joseph Espinoza

Joseph Espinoza  
Tennessee High School  
Division of Marketing Design  
8th Place

A Raisin in the Sun and Clybourne Park  
Marketing Design, Calendar  
Joseph Espinoza

PROPANELS

# Division I Costume Design


  
 Jonathan Cowan
   
 Fashion Design Student
   
 Fashion Institute of Technology
   




*From the "Vintage" series in the Sun and sand*



*Jim Clybourne Park 1971*

BROWN IS THE NEW  
 HOT COLOR FOR 1971  
 BROWN IS THE NEW  
 HOT COLOR FOR 1971  
 BROWN IS THE NEW  
 HOT COLOR FOR 1971



*1971 Clynbourne Park 1971*



  
 Callan Thornell  
 West High School  
 District 1 Creative Theater  
 2nd Place



A Raisin in the Sun & Clybourne Park  
 by Lorraine Hansberry  
 Callan Thornell  
 West High School





A Raisin in The Sun

Act I Scene 1 Costumes

Lena Younger (Mama)

Travis Younger

Hannah Younger

Ruth Lee Younger

Walter Younger



A Raisin in the Sun

1959

Clybourne Park

2009



Female Costumes

Francine

Lena

Clybourne Park Act 1

Clybourne Park Act 2



Male Costumes

Clybourne Park Act 1

Clybourne Park Act 2



Kenneth

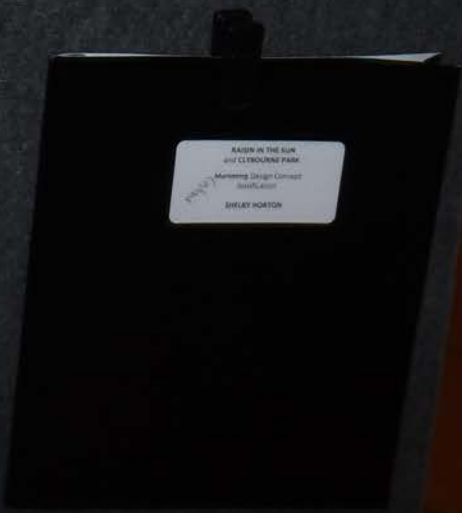


Jim





  
 Shelby Horton  
 Cass-Burg High School  
 District 1 Costume Design  
 4th Place



ISABEL GARCIA  
Isabel Garcia  
Bassett High School  
Costume Design  
Ms. Garcia



RAISIN IN THE SUN  
and CLYBOURNE PARK  
Costume Design Contest  
Judges  
ISABEL GARCIA

ash Jacobs  
Senior High School  
Clybourne Park



Act 1 Scene 1



Clybourne Park

Act 2 Scene 1

Act 1 Scene 1



Clybourne Park

Act 2 Scene 1

Act 1 Scene 1



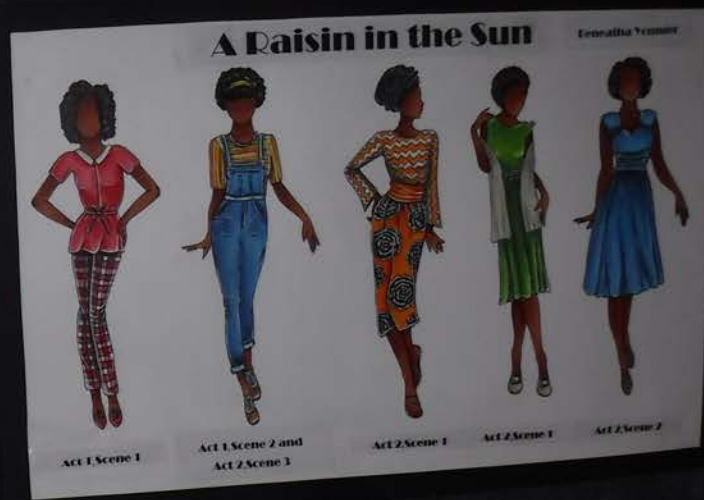
8 READS IN THE SUN  
and CLYBOURNE PARK  
Costume Design Course  
Final Project  
LEAH JACOBS

# Division II Costume Design



  
 Savanna Menzel  
 #2018  
 Designer of Costume Design  
 State Champion

MADE BY THE SUN  
 AND CLYBOURNE PARK  
 Costume Design Contest  
 SAVANNA MENZEL



  
**Anna Cantu**  
 Louisville High School  
 Design & Costume Design  
 2nd Place



A Raisin in the Sun and  
 Clybourne Park  
 Costume Design Justification  
 Anna Cantu











Divison I Hair/Makeup Design



Raisin in The Sun

Beneath: Act Two: Scene One



Beneath: Act Two: Scene One



Clybourne Park

Francine: Act One: Scene One



Francine: Act One: Scene One



Clybourne Park

Act One: Scene One



Act One: Scene One



rafa  
1/2/2016  
Fiona and  
[illegible]



MAMA  
A Raisin in the Sun

FRANCINE  
Clybourne Park, Act I

LENA  
Clybourne Park, Act II





ACT 1  
ACT 2  
ACT 3

Oghene  
Paul

Act 1

ACT 1  
ACT 2  
ACT 3

Oghene  
Paul

Act 2



Albert



Kevin



A Boina  
the Star



Walter



Oghene  
Paul



Act 1  
Act 2



Albert



Act 1



Oghene  
Paul

Kevin

Act 2

ACT 1  
ACT 2  
ACT 3

A Boina  
the Star

Act 2  
Act 3



Walter







A Boy in the Box

Neural Connections

1. The brain is the control center of the body. It receives information from the senses and sends out instructions to the rest of the body.

2. The brain is made up of billions of neurons. Each neuron has a cell body, a nucleus, and long fibers called axons and dendrites.

3. Neurons are connected to each other, forming a complex network. This network allows the brain to process information and control the body.

4. The brain is constantly working. It is always receiving information from the senses and sending out instructions to the body.

5. The brain is the most important part of the body. Without it, we would not be able to think, feel, or move.

Cherry Park

Cherry Park

1. Cherry Park is a beautiful area with many trees and flowers.

2. It is a great place to go for a walk or a picnic.

3. There are many different types of trees and plants in Cherry Park.

4. The park is always full of people who enjoy the outdoors.

5. Cherry Park is a wonderful place to spend time with family and friends.

Cherry Park

Cherry Park

1. Cherry Park is a beautiful area with many trees and flowers.

2. It is a great place to go for a walk or a picnic.

3. There are many different types of trees and plants in Cherry Park.

4. The park is always full of people who enjoy the outdoors.

5. Cherry Park is a wonderful place to spend time with family and friends.

A Boy in the Box

Neural Connections

Cherry Park

Cherry Park





A Kain in the Sun

Lena Younger



Boo

Clybourne Park Act 1



Lena

Clybourne Park Act 2



A Kain in the Sun

Lena Younger



Clybourne Park Act 1 Boo



Clybourne Park Act 2

Lena



# Division II Hair/Makeup Design



**LENA YOUNGER (MAMA)  
A RAISIN IN THE SUN**

*[Small text block containing a biography or description of the character]*

**FRANGINE  
CLYBOURNE PARK - ACT 1**

*[Small text block containing a biography or description of the character]*

**LENA  
CLYBOURNE PARK - ACT 1**

*[Small text block containing a biography or description of the character]*

**LENA YOUNGER (MAMA)  
A RAISIN IN THE SUN**

**FRANGINE  
CLYBOURNE PARK - ACT 1**

**LENA  
CLYBOURNE PARK - ACT 1**



RUTH



RUTH

Ruth - Ruthie in the Sun, Act 1 & 2	
1	Watercolor - Skin
2	Watercolor - Hair
3	Watercolor - Eyes
4	Watercolor - Mouth
5	Watercolor - Cheeks
6	Watercolor - Neck
7	Watercolor - Ears
8	Watercolor - Lips
9	Watercolor - Teeth
10	Watercolor - Eyebrows
11	Watercolor - Eyelashes
12	Watercolor - Eyeliner
13	Watercolor - Eyeshadow
14	Watercolor - Blush
15	Watercolor - Lipstick
16	Watercolor - Nail Polish
17	Watercolor - Hairbrush
18	Watercolor - Hairband
19	Watercolor - Hairpins
20	Watercolor - Hair Ties



FRANCINE

Francine - Francine in the Sun, Act 1 & 2	
1	Watercolor - Skin
2	Watercolor - Hair
3	Watercolor - Eyes
4	Watercolor - Mouth
5	Watercolor - Cheeks
6	Watercolor - Neck
7	Watercolor - Ears
8	Watercolor - Lips
9	Watercolor - Teeth
10	Watercolor - Eyebrows
11	Watercolor - Eyelashes
12	Watercolor - Eyeliner
13	Watercolor - Eyeshadow
14	Watercolor - Blush
15	Watercolor - Lipstick
16	Watercolor - Nail Polish
17	Watercolor - Hairbrush
18	Watercolor - Hairband
19	Watercolor - Hairpins
20	Watercolor - Hair Ties

FRANCINE



LENA



Thomas H. Moore Middle School  
Rangan Thornton  
The Clark High School  
Member of the National Honor Society  
4th Place



Thomas H. Moore Middle School  
Rangan Thornton  
The Clark High School  
Member of the National Honor Society  
4th Place

### Francine

Clybourne Park Act 1

Francine is a young woman who is quiet and reserved. She is a member of the National Honor Society and is a member of the church choir. She is a member of the church choir and is a member of the church choir.

### Francine

Clybourne Park Act 1

### Lena

Clybourne Park Act 1

Lena is a young woman who is quiet and reserved. She is a member of the National Honor Society and is a member of the church choir. She is a member of the church choir and is a member of the church choir.

### Lena

Clybourne Park Act 1

### Beneatha

A Raisin in The Sun Act 1

Beneatha is a young woman who is quiet and reserved. She is a member of the National Honor Society and is a member of the church choir. She is a member of the church choir and is a member of the church choir.

### Beneatha

A Raisin in The Sun Act 1

1971  
Mama  
1971



Mama  
Mama was a woman of many talents. She was a mother, a teacher, a friend, and a warrior. She was the heart of our community and the soul of our nation. Her legacy lives on in the hearts of all who love her.



Francine  
Francine was a woman of many talents. She was a mother, a teacher, a friend, and a warrior. She was the heart of our community and the soul of our nation. Her legacy lives on in the hearts of all who love her.



Lorraine  
Lorraine was a woman of many talents. She was a mother, a teacher, a friend, and a warrior. She was the heart of our community and the soul of our nation. Her legacy lives on in the hearts of all who love her.



INSPIRATION DAY







A small white label with text, possibly a name or title, located in the center of the display.



# Division I Group Design

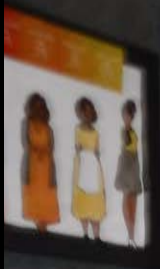


PROGRAM











**League High School Presents**

**A Raisin in the Sun**  
by Lorraine Hansberry  
May 3rd, 5th  
Auditorium  
7:00 PM


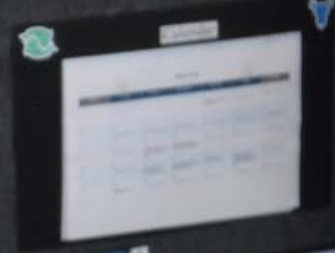
**Clybourne Park**  
by Bruce Norris  
May 4th, 6th  
Auditorium  
7:00 PM

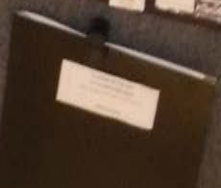
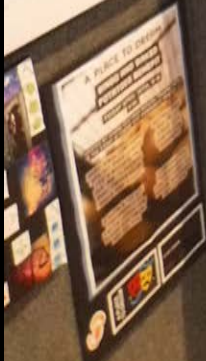
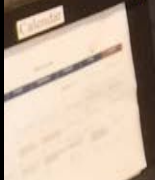
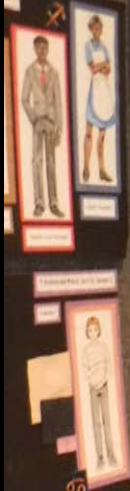
Adult Tickets - \$10  
Student Tickets - \$5

Play produced with special permission from Samuel French.

Please Tickets Call (844) 888-8884

Go to our Facebook page for more info.







League High School presents  
 2 plays + 5 courses = One Incredible Night!

# Clybourne Park

by Bruce Wittig

## A Raisin in the Sun

by Lorraine Hansberry

Join us for a five course meal and an evening of repertory theatre and help us **BREAK THROUGH** society's expectations and stereotypes.

**May 3 - 6**  
**at 6pm**  
**LHS Foyer**

Tickets \$20  
 Call Culture @ 903.344.914  
 or 31.122.1006



**FREE**  
**Meat & Greet**

- Meet the designers for Clybourne Park & A Raisin in the Sun
- Backstage Tours
- Tasting samples from the LHS Culinary Club

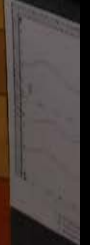
April 20th at 7pm  
 LHS Auditorium

**APRIL 2018**

1	2	3	4	5	6	7
8	9	10	11	12	13	14
15	16	17	18	19	20	21
22	23	24	25	26	27	28
29	30					

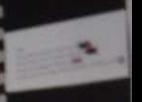
**2018 MAY**

1	2	3	4	5	6	7
8	9	10	11	12	13	14
15	16	17	18	19	20	21
22	23	24	25	26	27	28
29	30	31				



eat & Greet  
the designers  
Clybourne Park &  
Raisin in the Sun  
Stage Sets  
strip samples from  
the US Culinary Club  
April 20th at the  
LBS Auditorium





### Clybourne Park

By Bruce Norris



Text



**Chbourne Park**  
By Louise Mackay



**Raisin in the Sun**  
By Louise Mackay



**Chbourne Park**  
By Louise Mackay



A Raisin in the Sun  
1959  
1994  
2009



Francine



A Raisin in the Sun  
1959  
1994  
2009



Lena



A Raisin in the Sun  
1959  
1994  
2009



Ruth



**A Raisin in the Sun**  
1959



Chbourne Park 1959

**Chbourne Park**  
1994



Chbourne Park 1994



Illustration of three women in different outfits.



Illustration of two women in different outfits.



Illustration of two men in different outfits.



Vertical text on the right side of the display board.

Vertical text on the right side of the display board.

Caption for the 'If These Walls Could Talk' poster.



Caption for the small framed item at the bottom center.



CLYDEBORO PARK  
FRANCINE  
ACT 1



CLYDEBORO PARK  
LENA  
ACT 2



CLYDEBORO PARK  
LENA  
ACT 2



A RAIN IN THE SUN  
MORAYTHA  
ACT 3, SCENE 1



CLYDEBORO PARK  
LENA  
ACT 2



CLYDEBORO PARK  
LENA  
ACT 2



CLYDEBORO PARK  
LENA  
ACT 2



A RAIN IN THE SUN  
MORAYTHA  
ACT 3, SCENE 1

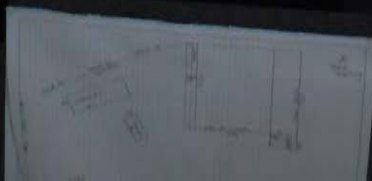
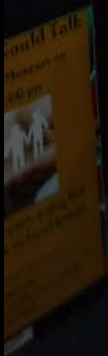


A RAIN IN THE SUN  
MORAYTHA  
ACT 3, SCENE 1

CLYDEBORO PARK  
LENA  
ACT 2



CLYDEBORO PARK  
LENA  
ACT 2



# Division II Group Design

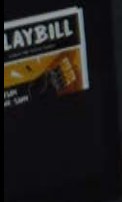
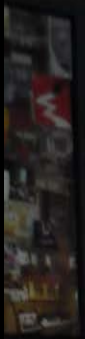


MARKETING CALENDAR

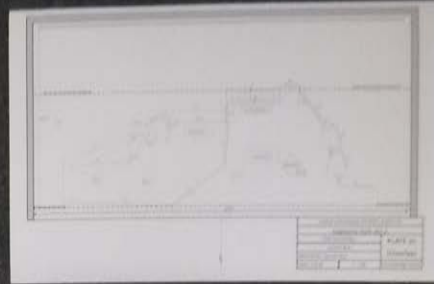
DATE	MARKETING ACTIVITY











1. Approx. 10/10/10  
White Female  
5'10" Tall  
Brown Hair  
Blue Eyes

2. Approx. 10/10/10  
White Female  
5'10" Tall  
Brown Hair  
Blue Eyes



3. Approx. 10/10/10  
White Female  
5'10" Tall  
Brown Hair  
Blue Eyes



League High School

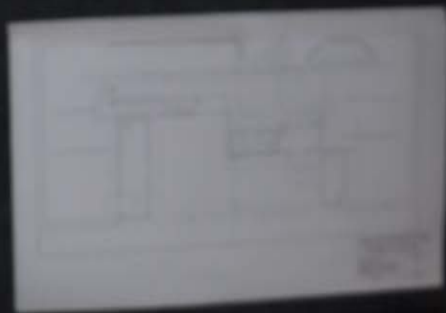
### A RAISIN IN THE SUN & CLYBOURNE PARK



WHY 2nd 4 TICKETS

www.leaguehighschool.edu

Facebook, Instagram, Twitter, YouTube, LinkedIn icons



### MEMORIAL DECISION SPENDS



### EVENT #1

LEAGUE HIGH SCHOOL  
CLASSROOM IN RECEPTION





League High School  
presents

### A RAISIN IN THE SUN & CLYBOURNE PARK

The Black Renaissance  
at the Black Renaissance



2 SHOWS  
1 NIGHT

MAY 3<sup>RD</sup>, 4<sup>TH</sup>, 5<sup>TH</sup> & 6<sup>TH</sup> AT 6:30 PM  
TICKETS \$8

956-450-4556

Genitrication  
for Better or Worse

LOCATION: LEAGUE HIGH SCHOOL THEATRE 300 WELLS AVE LEAGUE TX 75043

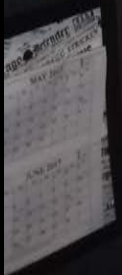


**EVENT #1**

LEAGUE HIGH SCHOOL  
SEASON IN REPERTOIRE  
"A SEASON OF CHANGE"

WELCOME TO THE SEASON!  
LEAGUE HIGH SCHOOL  
REPERTOIRE SEASON 2019-2020  
OFFICIALS: JAMES JONES, JAMES JONES  
SEASON IN REPERTOIRE







A white document with text, possibly a schedule or list, pinned to the board.



A white document with text and a small photograph, pinned to the board.



A white document with text, pinned to the board.

A white document with text, pinned to the board.

A white document with text, pinned to the board.



MAY 200



Small white label with illegible text, possibly a name or title.

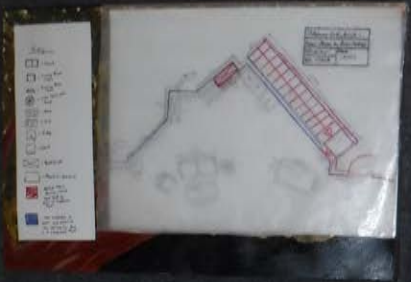




Clothing Parlor

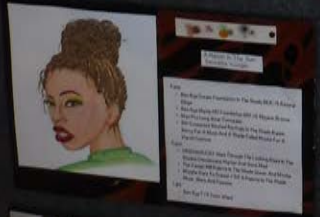
Clothing Parlor 2

Small white label at the top right.



Small white label on the left side.

Small white label on the right side.



Small white label with text below the portrait.



Small white label with text below the portrait.



<p>APRIL 2012</p>	<p>MAY 2012</p>
<p>APRIL 2011</p>	<p>MAY 2011</p>





CLAYTON PARK



CLAYTON PARK



A BAKER BY THE NAME



A BAKER IN THE STR



CLAYTON PARK



CLAYTON PARK



Congratulations to our medalists!